

# Community and Economic Development FY 2010 Year-End Report



The Community and Economic Development Department (CED) provides LCRA customers and service area residents with an array of services designed to improve quality of life, foster economic sustainability, and attract investments to our communities.

These services fall into seven major categories:

### **Analysis and Planning:**

Assisting in the study and documentation of current conditions and in developing approaches to successfully confront identified challenges.

### **Leadership:**

Preparing community members to meet the future by developing skilled leaders.

### **Training:**

Growing skills necessary for successful community and economic development.

### **Household Hazardous Waste:**

Assisting communities in making the public aware of ways to safely manage and dispose of hazardous materials.

### **Marketing:**

Bringing local economic assets and opportunities to the attention of potential investors.

### **Tourism:**

Supporting the creation and preservation of tourism opportunities, and promoting them to potential visitors.

### **Grants:**

Providing matching funds to encourage and support local government and nonprofit organizations with capital improvements and other public projects.

~

These activities strengthen relationships within LCRA's service area by providing support to our customers that communities would otherwise find difficult to access.

The growing needs of our customers compel them to prepare for growth, to increase their economic vitality, and to hone the tools for success.

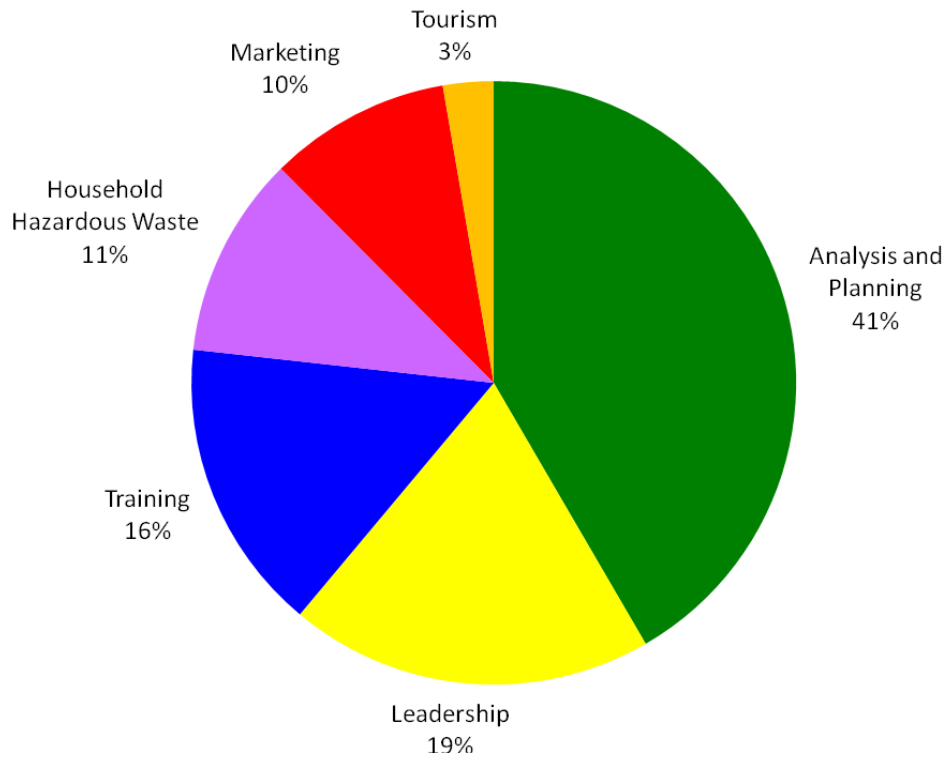
LCRA's Community and Economic Development team builds a foundation of well-informed citizens and competent leaders.

## Community and Economic Development

### Highlights

- Household Hazardous Waste: Technical assistance has helped five organizations receive more than \$80,000 in grant awards for their solid waste programs.
- Cuero and SIPCO: Provided an economic impact analysis that helped Cuero develop the incentive package that led to the \$6 million investment announcement by SIPCO, a wind power component manufacturer.
- Grants: LCRA's Community Development Partnership Program awarded 53 grants worth more than \$950,000 and leveraged more than \$3.9 million for communities in LCRA's service area.

### Services by Program Type



### Completed Projects by Program– FY 2010

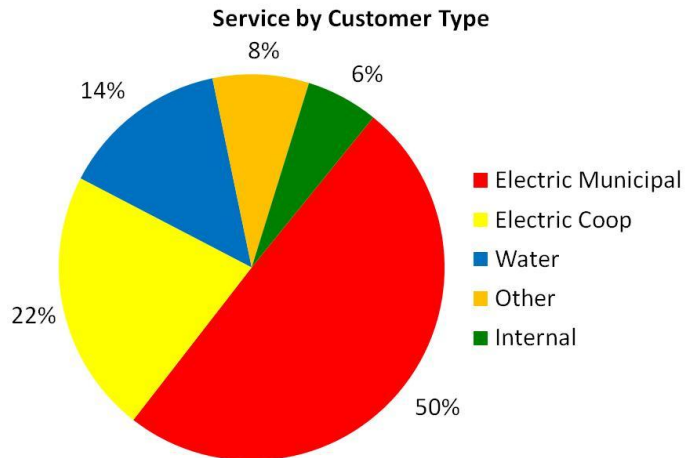
	<b>Analysis and Planning</b>	<b>77</b>
	<b>Leadership</b>	<b>36</b>
	<b>Training</b>	<b>29</b>
	<b>Household Hazardous Waste</b>	<b>20</b>
	<b>Marketing</b>	<b>18</b>
	<b>Tourism</b>	<b>5</b>
	<b>Total</b>	<b>185</b>

# FAQs

## FREQUENTLY ASKED QUESTIONS

### **How do CED programs and services benefit LCRA's customers and communities?**

Our programs are delivered on behalf of LCRA's electric and water customers. These programs help develop local leaders, recruit and retain businesses, promote tourism and sustainable economic development, and provide strategic plans and solutions to economic challenges. The CED team specializes in customized programs and services to meet the unique needs of each community.



### **What are the benefits of this year's changes to the Household Hazardous Waste (HHW) program?**

Through our partnership with Texas Commission on Environmental Quality, our administration of the Supplemental Environmental Program (SEP) produced three successful collection events throughout the service area, and our strategic planning resulted in the formation of two countywide steering committees resolved to implementing HHW programs.

### **Why has CED started providing the Economic Development Forums to its customers?**

The Economic Development Forums are designed to bring cutting edge concepts and topics in community and economic development to our customers. Our forums feature nationally recognized experts in economic development and will take place several times a year to address training programs previously delivered through the Texas Leadership Institute. The Texas Leadership Institute, which was previously sponsored by LCRA, has now been restructured and relocated to the Texas Center for Rural Entrepreneurship.

# CED Programs Completed Projects FY2010



The Community and Economic Development Department (CED) provides LCRA customers and constituents with an array of services designed to improve quality of life, foster economic sustainability, and attract investment to our communities.

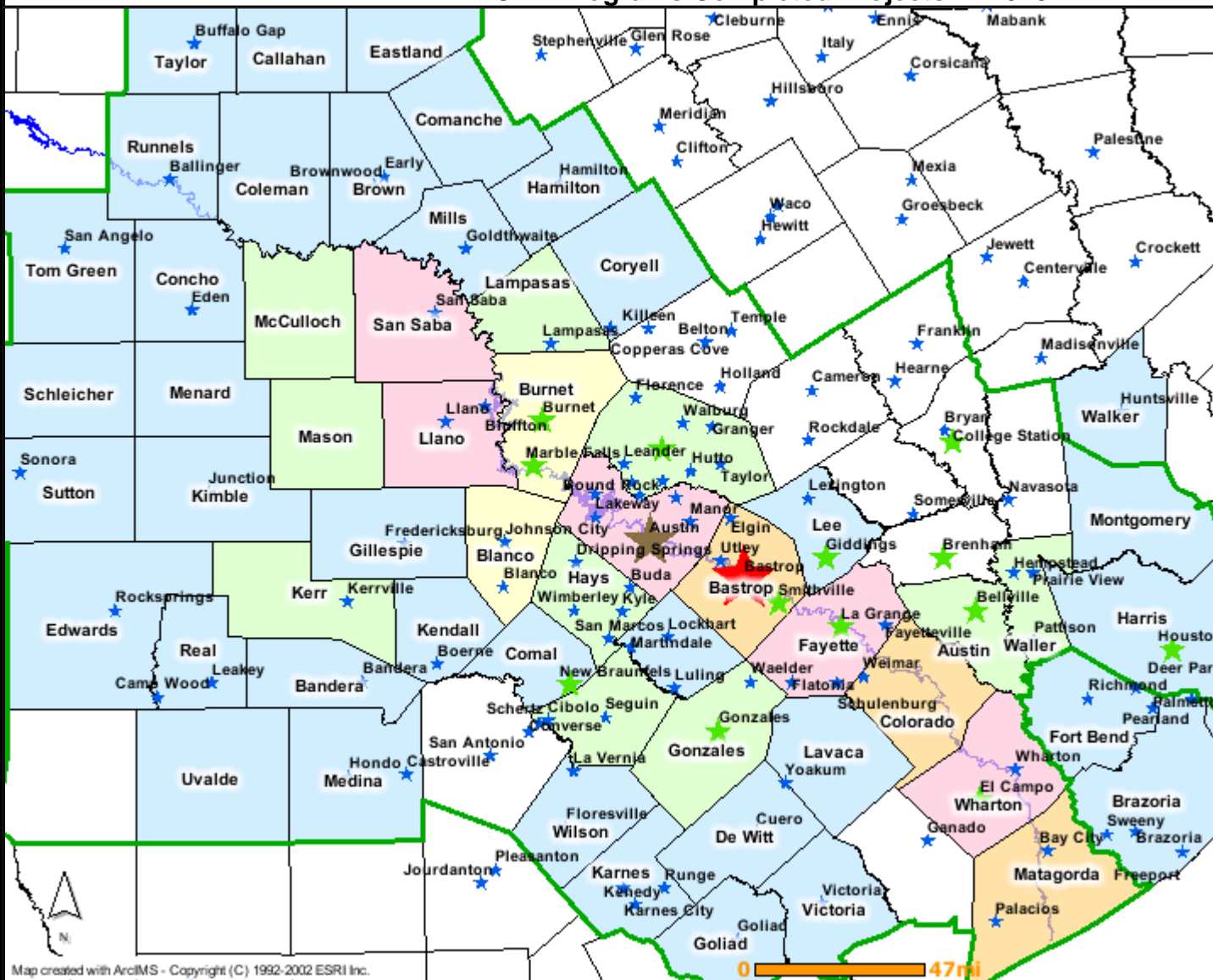
### Legend

#### CED City Projects

- ★ 1-3
- ★ 4-6
- ★ 7-9
- ★ 10-12
- ★ Greater than 12

#### CED County Projects

- 1-3
- 4-6
- 7-9
- 10-12
- Greater than 12
- Service Area
- ~ Colorado River



Map created with ArcIMS - Copyright (C) 1992-2002 ESRI Inc.

### Disclaimer:

This map has been produced by the LCRA for its own use. Accordingly, certain information, features, or details may have been emphasized over others. The LCRA does not warrant the accuracy of this map, either as to scale, accuracy, or completeness. In addition, the LCRA expressly disclaims any and all warranties, expressed or implied, including the warranties of merchantability and fitness for purpose.