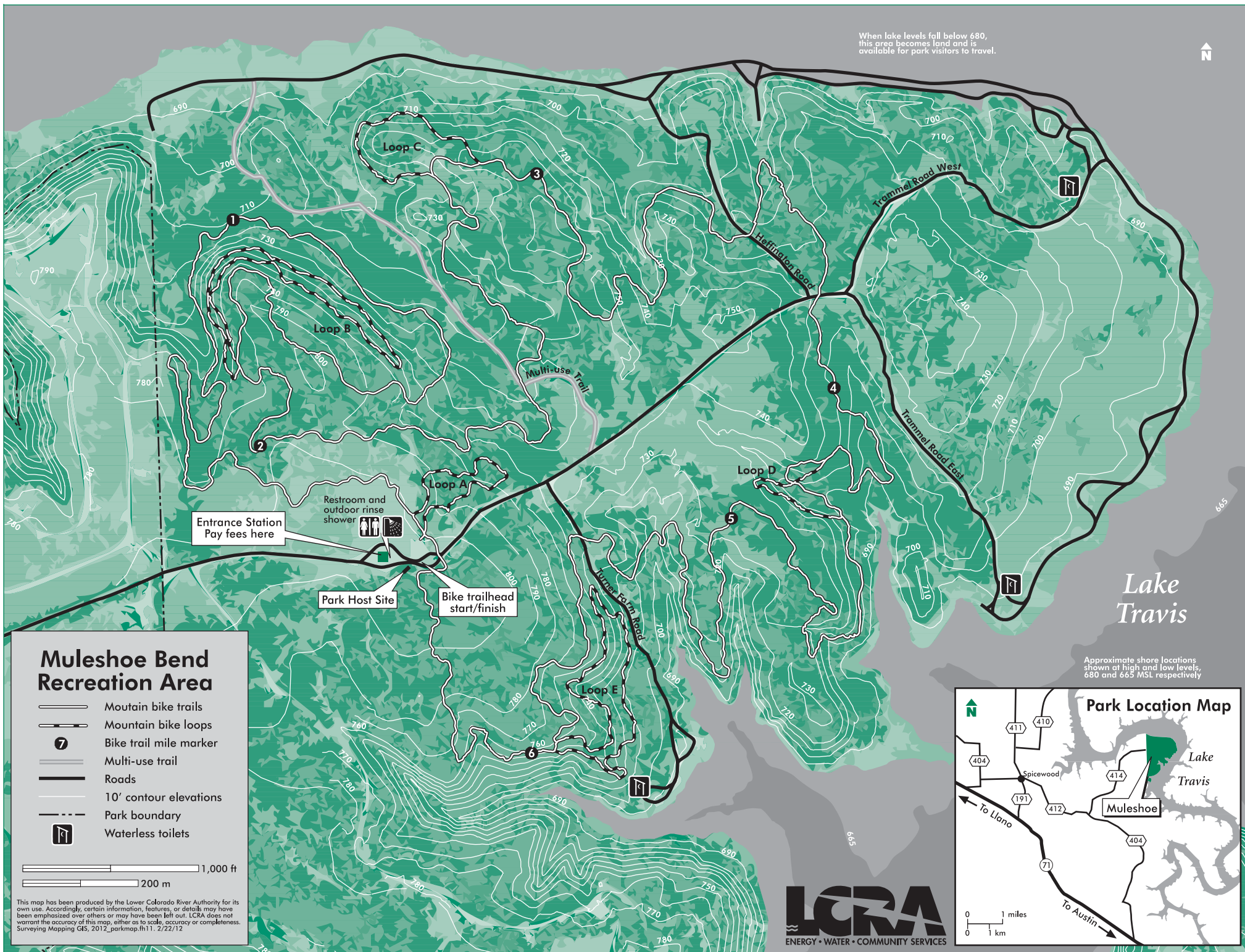
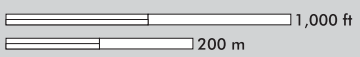


When lake levels fall below 680, this area becomes land and is available for park visitors to travel.



Muleshoe Bend Recreation Area

- Mountain bike trails
- Mountain bike loops
- Bike trail mile marker
- Multi-use trail
- Roads
- 10' contour elevations
- Park boundary
- Waterless toilets



This map has been produced by the Lower Colorado River Authority for its own use. Accordingly, certain information, features, or details may have been emphasized over others or may have been left out. LCRA does not warrant the accuracy of this map, either as to scale, accuracy or completeness. Surveying Mapping GIS, 2012_parkmap.fh11. 2/22/12

Lake Travis

Approximate shore locations shown at high and low levels, 680 and 665 MSL respectively

