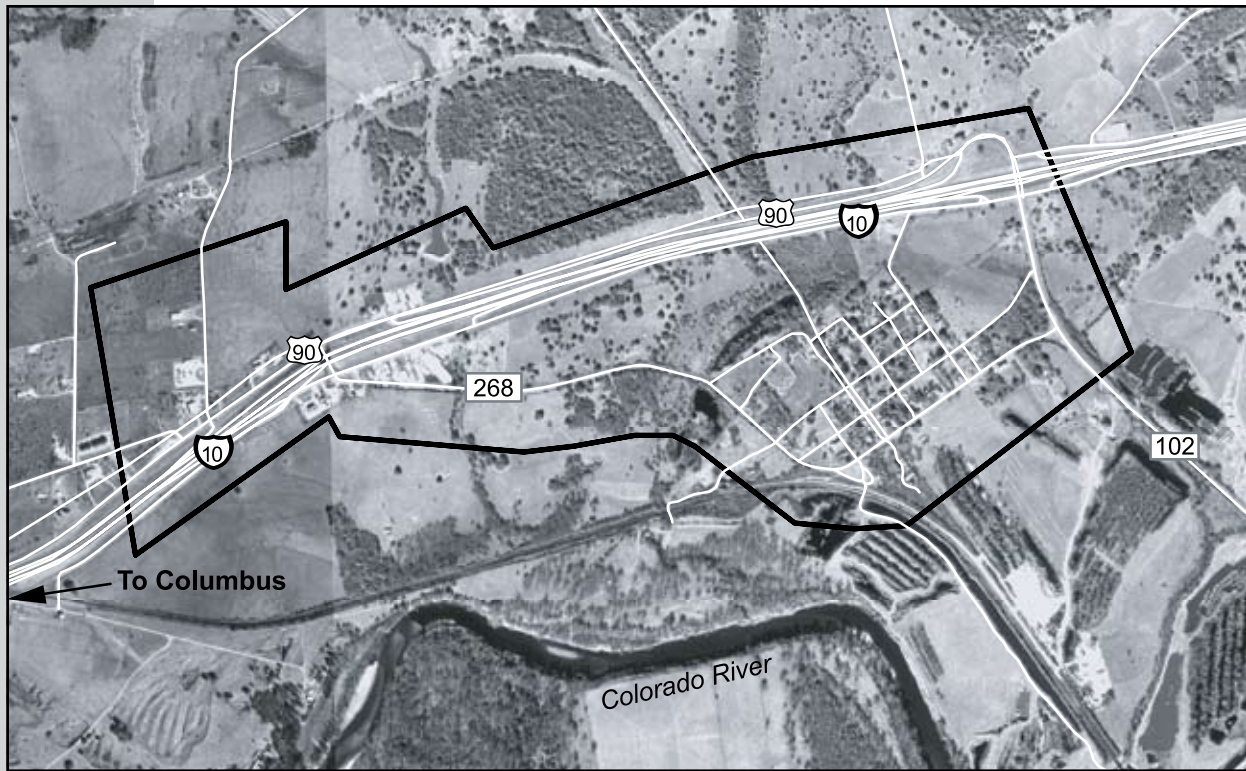


Southeast Region
Alleyton Wastewater System

Service	Retail wastewater collection and treatment
Customer	The community of Alleyton
Facilities	Collection system and treatment plant
Estimated Population Served	200
System Performance	Capacity of wastewater treatment plant: 50,000 gpd

Background LCRA agreed in 1996 to operate the wastewater system to prevent septic tanks from contaminating the well water supply. LCRA acquired the system from Colorado County in 2006.



1996	1997	2001 and 2003	2004	2006
<ul style="list-style-type: none"> Colorado County completed construction of wastewater system LCRA began system operation 	<ul style="list-style-type: none"> LCRA provided an infrastructure loan to Colorado County to construct collection line to serve commercial customers 	<ul style="list-style-type: none"> Colorado County received grants to build a central water system to replace groundwater supply 	<ul style="list-style-type: none"> Completed construction of water plant 	<ul style="list-style-type: none"> LCRA acquires system from Colorado County