

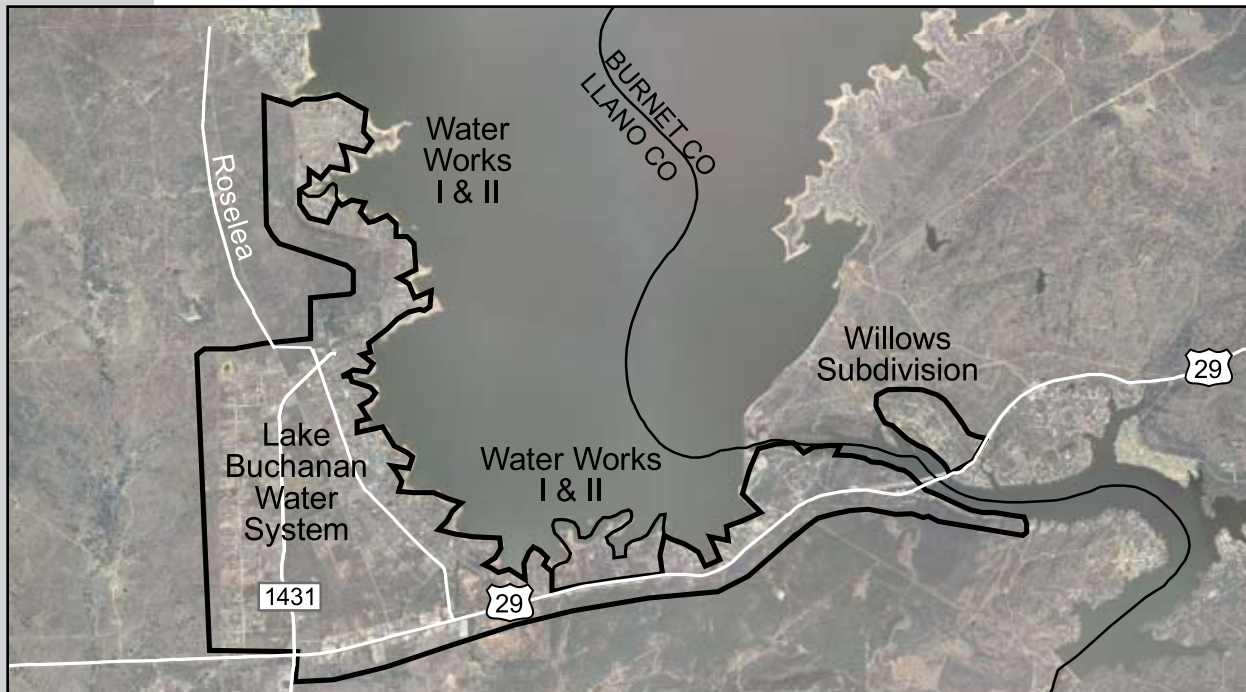
**Hill Country Region**

**Lake Buchanan Water System**

<b>Service</b>	Retail water treatment and distribution
<b>Customers</b>	Community of Lake Buchanan
<b>Facilities</b>	Surface water treatment plant and distribution system
<b>Estimated Population Served</b>	1,410
<b>System Performance</b>	System capacity: 504,000 gpd Peak daily flow (12 month): 410,000 gpd

**Background** LCRA acquired the Lake Buchanan system in August of 1999. Since that time the Willows subdivision on Inks Lake was added to the system along with several other developments in the area. Prior to LCRA owning the retail system, LCRA provided wholesale potable water to the Lake Buchanan WSC from a surface water treatment plant just below Buchanan Dam.

**Development** A new elevated storage tank will be added to the system in the first half of 2010. A new SCADA system has been installed at the treatment plant and also a new raw water intake has been constructed to enable the system to draw higher quality water during times of low levels at Lake Buchanan.



<b>1997</b>	<b>1999</b>	<b>2001</b>	<b>2010</b>
LCRA provided Lake Buchanan WSC with wholesale treated water from its Buchanan Dam WTP	LCRA acquired the system	Construction doubled plant capacity from 250,000 gpd to 500,000 gpd	Install new elevated storage tank