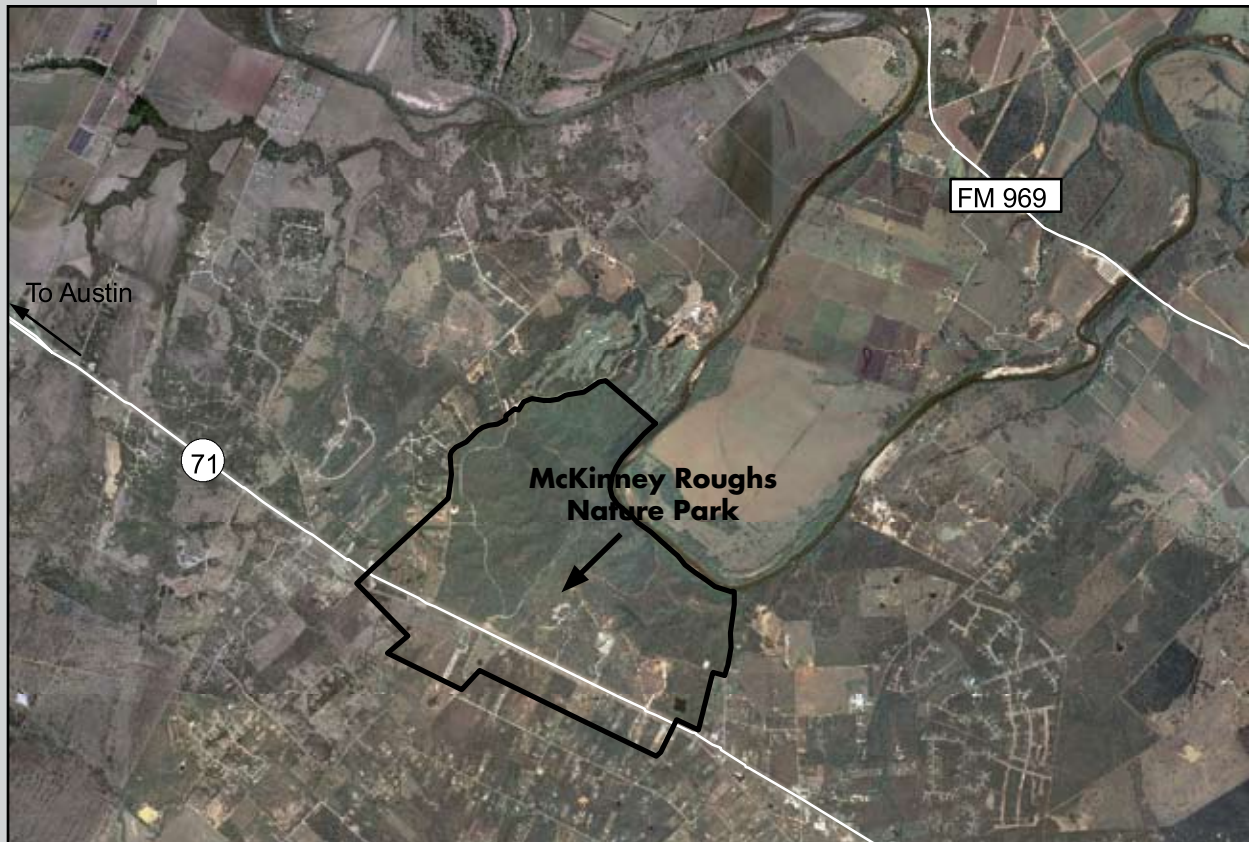


**Southeast Region**

**McKinney Roughs Wastewater System**

<b>Service</b>	Retail wastewater collection and treatment
<b>Customer</b>	McKinney Roughs Nature Park and surrounding area
<b>Facilities</b>	Collection system and treatment plant
<b>Estimated Population Served</b>	60
<b>System Performance</b>	Total permitted capacity: 12,500 gpd Maximum monthly daily average (12 month): 2,500 gpd

**Background** This 10,000 gallon-per-day system produces effluent of high enough quality to be reused in a variety of applications. All of the effluent is currently used on site for maintenance of a wetland and irrigation system.



<b>2001</b>	<b>2002</b>	<b>2010</b>
LCRA Board approved construction	System began operating	Service area increased due to inclusion of newly constructed Cedar Creek High School. (BISD)