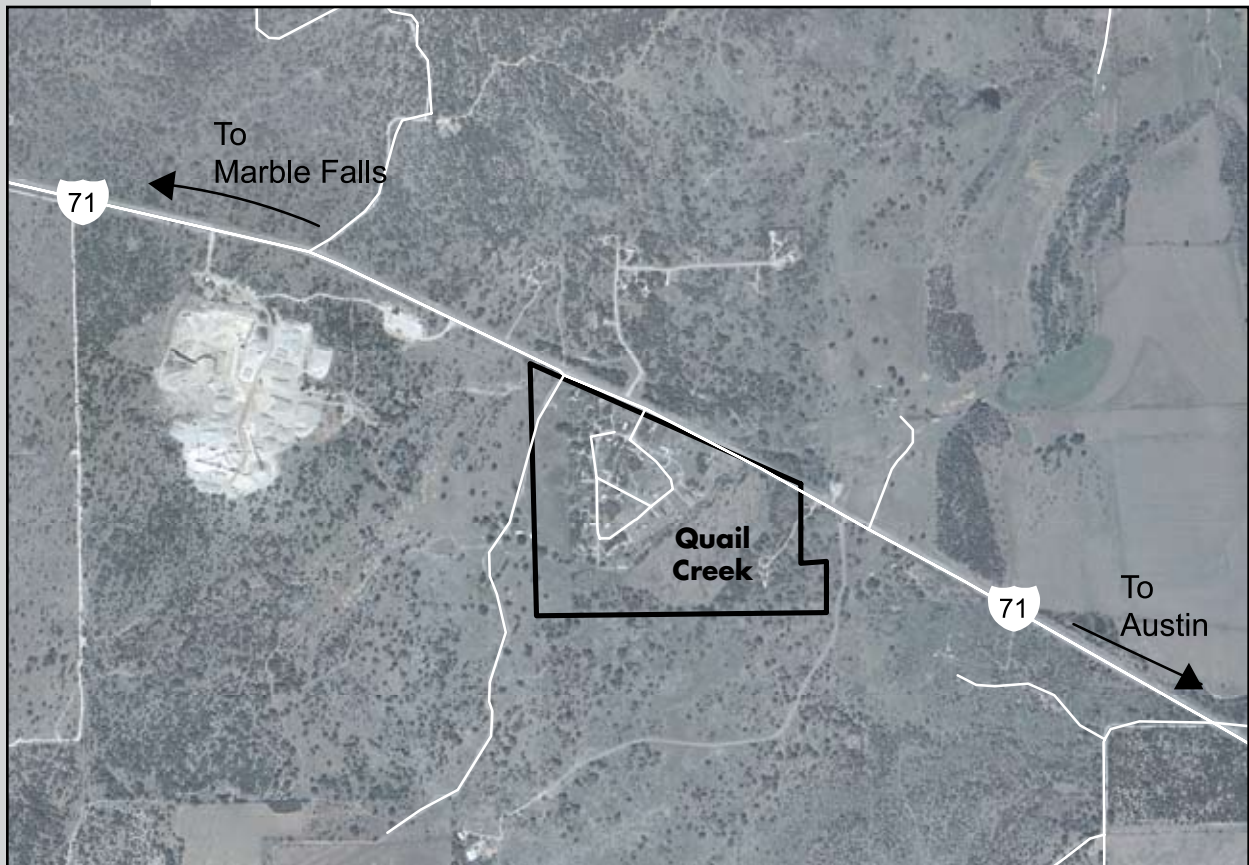


**Hill Country Region**  
**Quail Creek Water System**

|                                    |   |
|------------------------------------|---|
| <b>Services</b>                    | Retail water treatment and distribution                               |
| <b>Customers</b>                   | Residents of Quail Creek subdivision                                  |
| <b>Facilities</b>                  | Groundwater well, treatment and distribution system                   |
| <b>Estimated Population Served</b> | 100   |
| <b>System Performance</b>          | System capacity: 47,500 gpd<br>Peak daily flow (12-month): 16,000 gpd |

**Background** The Quail Creek Water System, located just west of Spicewood on Highway 71, was acquired by LCRA in 2000 to help solve problems with their aging infrastructure and water quality. The Quail Creek subdivision is currently built-out.



2000

LCRA acquired the system

2001

New storage, pumping and chlorination facilities added