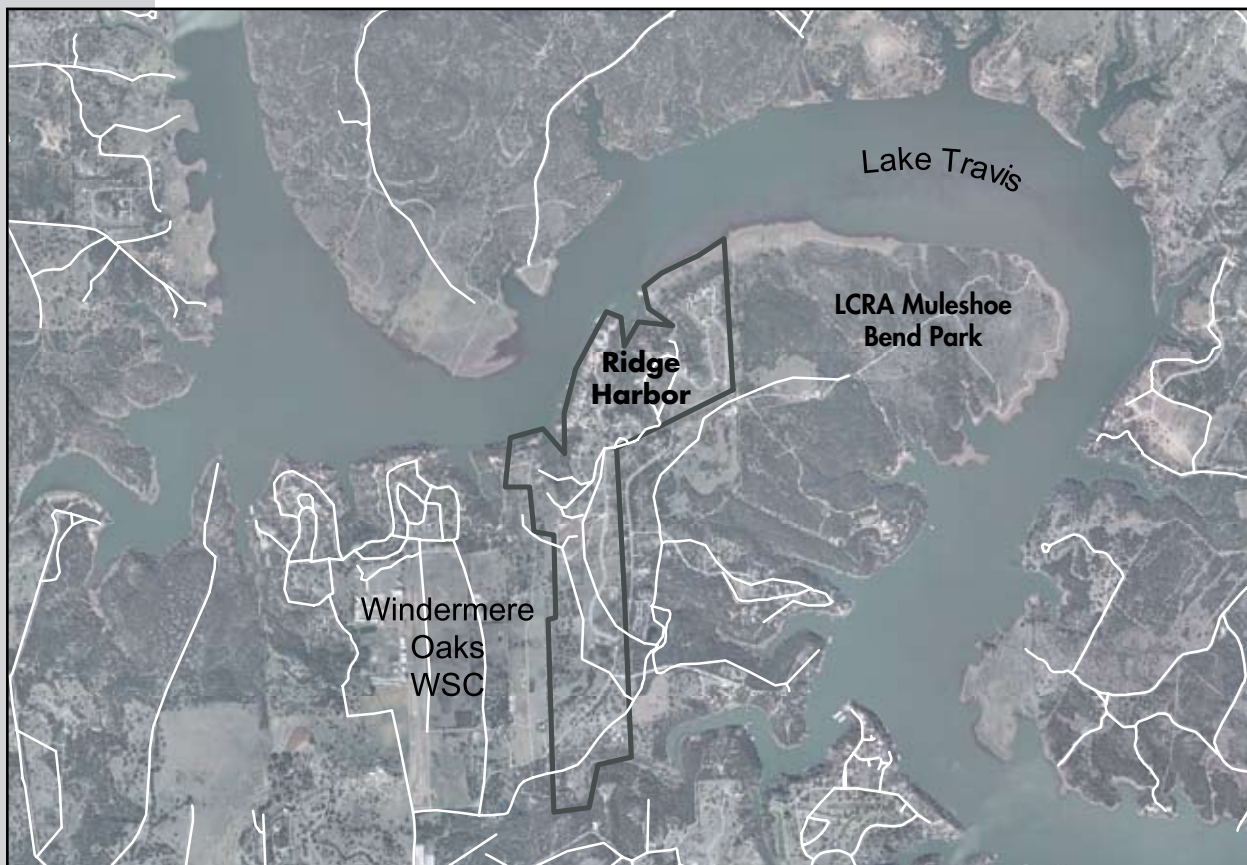


**Hill Country Region
Ridge Harbor Water System**

Services	Retail water treatment and distribution
Customers	Residents of Ridge Harbor
Facilities	Water treatment plant and distribution
Estimated Population Served	400
System Performance	System capacity: 144,000 gpd Peak daily flow (12 month): 132,000 gpd

Background LCRA acquired the Ridge Harbor Water System in October 2001 from a limited partnership. Although the water system has adequate capacity to meet demand, improvements are needed to meet peak water needs during a dry, hot summer. In addition, the raw water intake barge must be replaced.

Development LCRA will be replacing an aging water storage tank in 2010.



2002

LCRA acquired system

2003

LCRA began operations and general rehabilitation of plant components