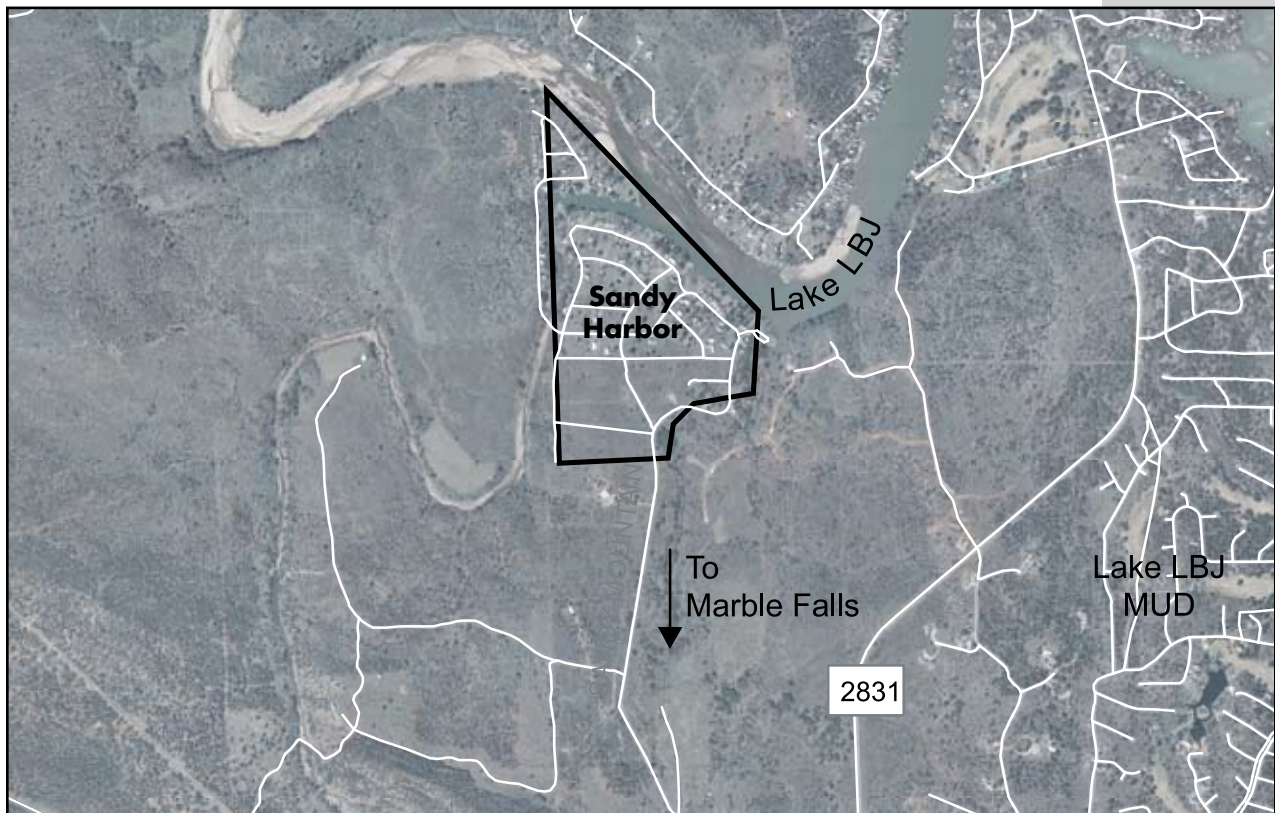


**Hill Country Region
Sandy Harbor Water System**

Service	Retail water treatment and distribution
Customers	Community of Sandy Harbor
Facilities	Distribution system connected to City of Horseshoe Bay
Estimated Population Served	390
System Performance	<p>The contract between LCRA and City of Horseshoe Bay provides the following quantities:</p> <ul style="list-style-type: none"> • 19,400 gpd (average day) • 54,700 gpd (peak day) • 110 gallons per minute (peak hour) <p>Calculated daily flow (12 month): 33,000 gpd</p>

Background LCRA acquired the system in 2002 at the request of Sandy Harbor Construction, Inc., which was run by property owners. At the time, the plant was in poor condition. It did not meet water quality standards and its capacity was inadequate. Constructing an interconnect with City of Horseshoe Bay enabled LCRA to decommission the plant, which had failed to meet new TCEQ standards implemented in January 2004.



2002	2004
LCRA acquired the system	LCRA constructed an interconnect with City of Hoseshoe Bay and abandoned use of the water treatment plant