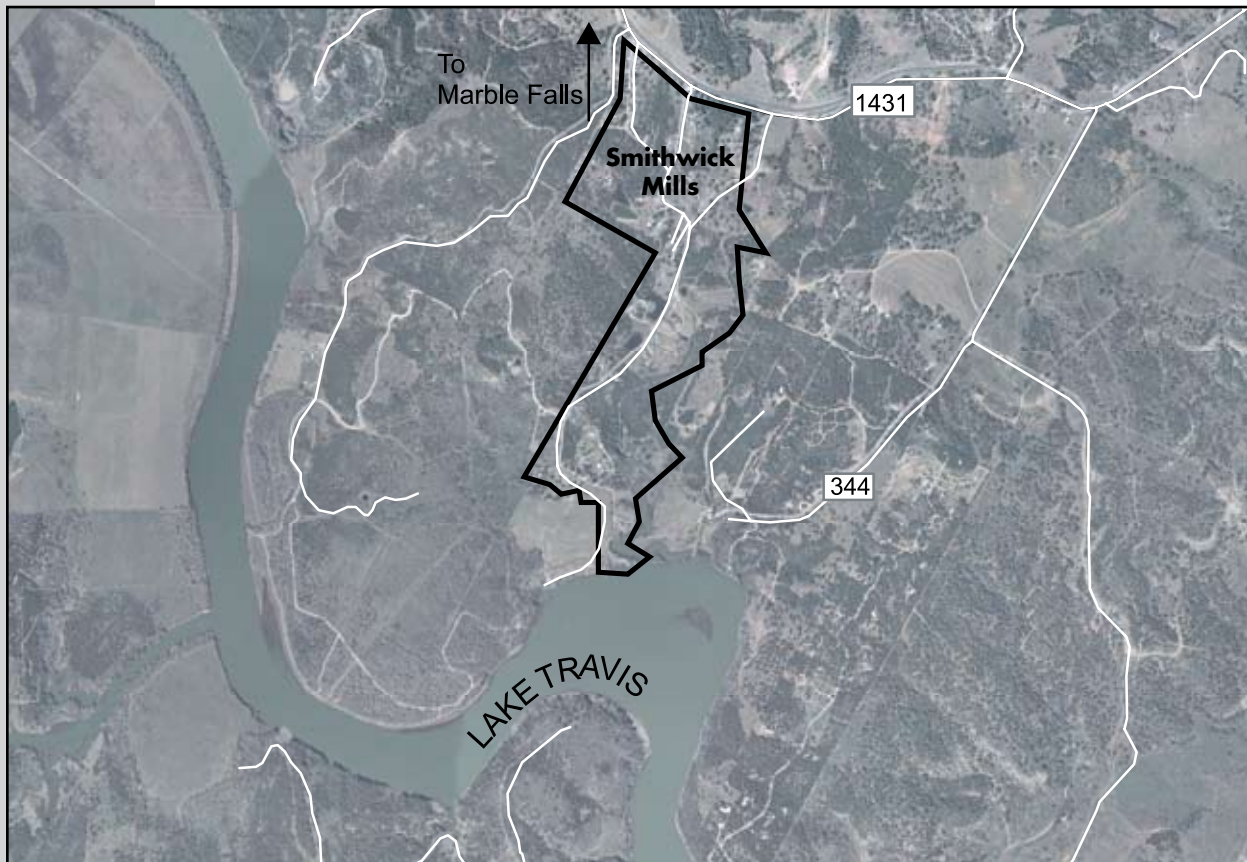


**Hill Country Region**

**Smithwick Mills Water System**

<b>Service</b>	Retail water treatment and distribution
<b>Customers</b>	Community of Smithwick Mills
<b>Facilities</b>	One groundwater well, storage and distribution system
<b>Estimated Population Served</b>	160
<b>System Performance</b>	Maximum daily flow: 51,600 gpd

**Background** LCRA acquired the system in 2002 at the request of the owner. When LCRA purchased it, the system's tanks had holes; it did not have enough pumping capacity; it did not have enough meters on all connections; and there was insufficient water to the system. LCRA negotiated a compliance agreement with TCEQ before taking over the system and has completed all needed system improvements.



<b>2002</b>	<b>2004</b>	<b>2006</b>
LCRA acquired system LCRA began operations and general improvements (controls, pumping, transmission main)	LCRA applied for TWDB funding to help address water supply issues	Water treatment plant constructed to supplement water supply