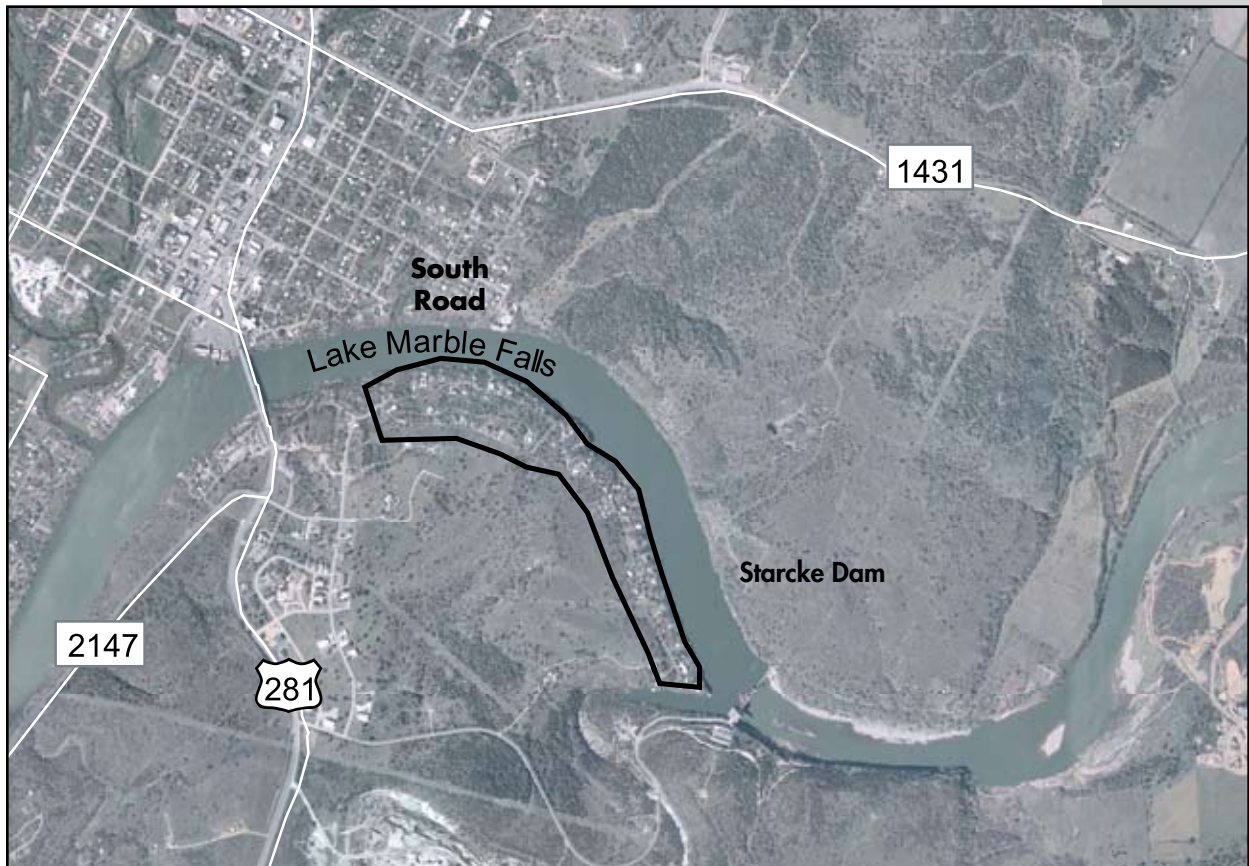


Hill Country Region
South Road Water System

Service	Retail water treatment and distribution
Customers	Community of South Road
Facilities	Distribution system and Marble Falls water system interconnect
Estimated Population Served	140
System Performance	Calculated peak daily flow: 40,000 gpd

Background When LCRA acquired the South Road system in 2002, the existing water plant was in poor condition and in need of significant rehabilitation. Instead of spending time and money upgrading the existing water plant for such a small number of customers, LCRA negotiated an agreement to purchase wholesale water from the City of Marble Falls. Since this time, LCRA has abandoned the existing treatment facilities.



2002 **2003**

LCRA acquired system as surface water system

LCRA began operations

Abandoned plant in mid-2002 and interconnected to Marble Falls