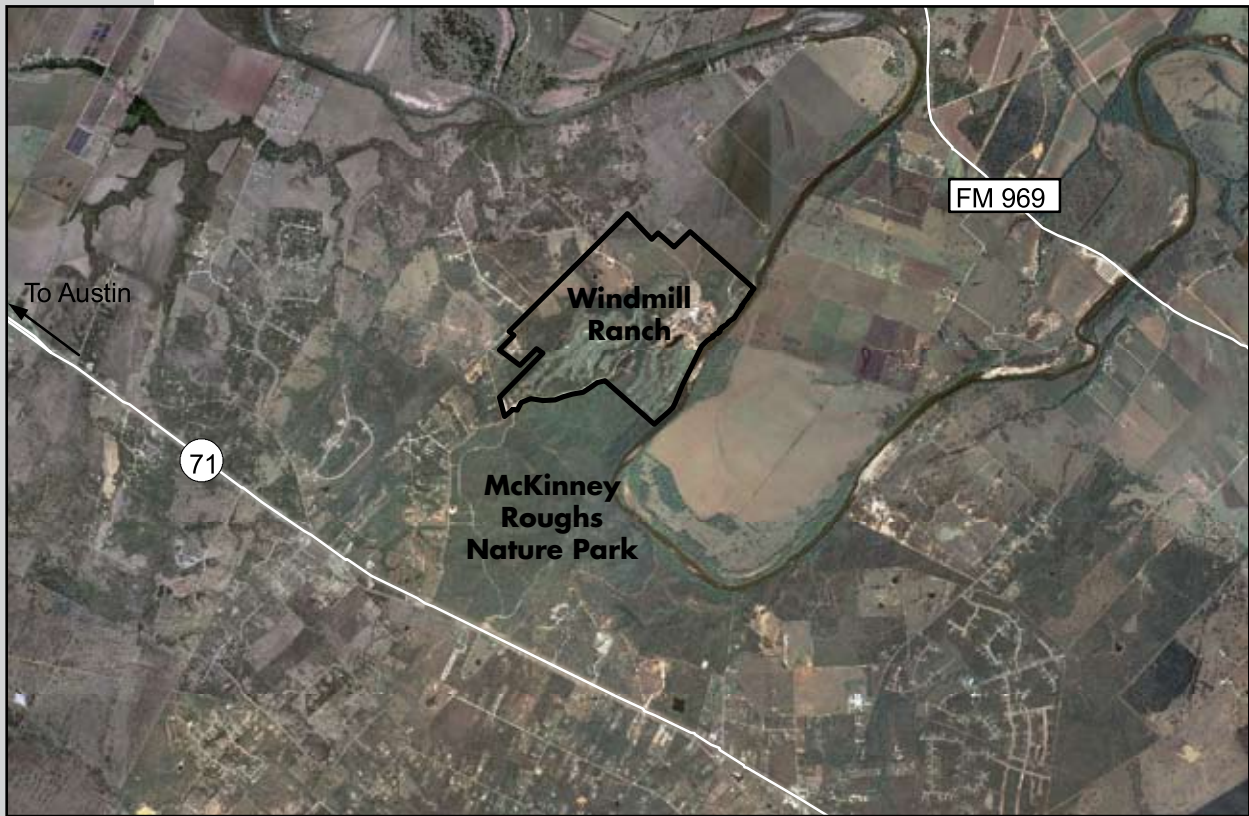


**Southeast Region**

**Windmill Ranch Raw Water and Wastewater System**

<b>Service</b>	Effluent treatment and raw water distribution for irrigation
<b>Customers</b>	Hyatt Regency Lost Pines Resort and Spa
<b>Facilities</b>	Wastewater treatment and distribution plant (under construction)
<b>Estimated Population Served</b>	Hotel and spa; projected 1,000 LUEs (buildout)
<b>System Performance</b>	Raw water capacity: 1390 gpm Capacity of wastewater treatment plant: 250,000 gpd Maximum monthly flow at wastewater treatment plant: 120,000 gpd

**Background** Construction began in October 2004. The raw system is operational. Construction of the wastewater system was completed in 2005. The plant has a capacity of 250,000 gpd with expansion considerations for 500,000 gpd.



**2005**

LCRA completes plant construction

**2006**

Hyatt Regency Lost Pines Resort and Spa opens