

Basin Conditions Update

Water Operations Committee Meeting

Feb. 18, 2026



U.S. Drought Monitor Texas

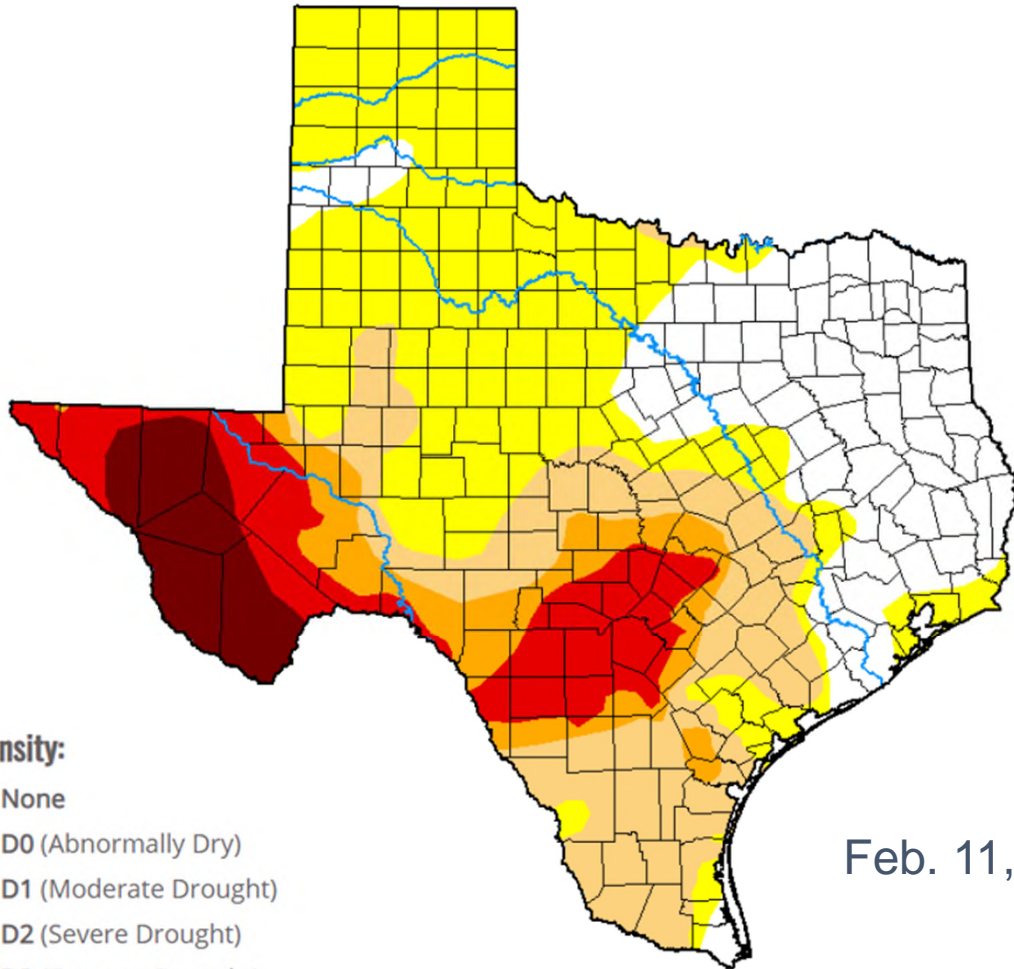
The Drought Monitor focuses on broad-scale conditions. Local conditions may vary. For more information on the Drought Monitor, go to <https://droughtmonitor.unl.edu/About.aspx>

Author:

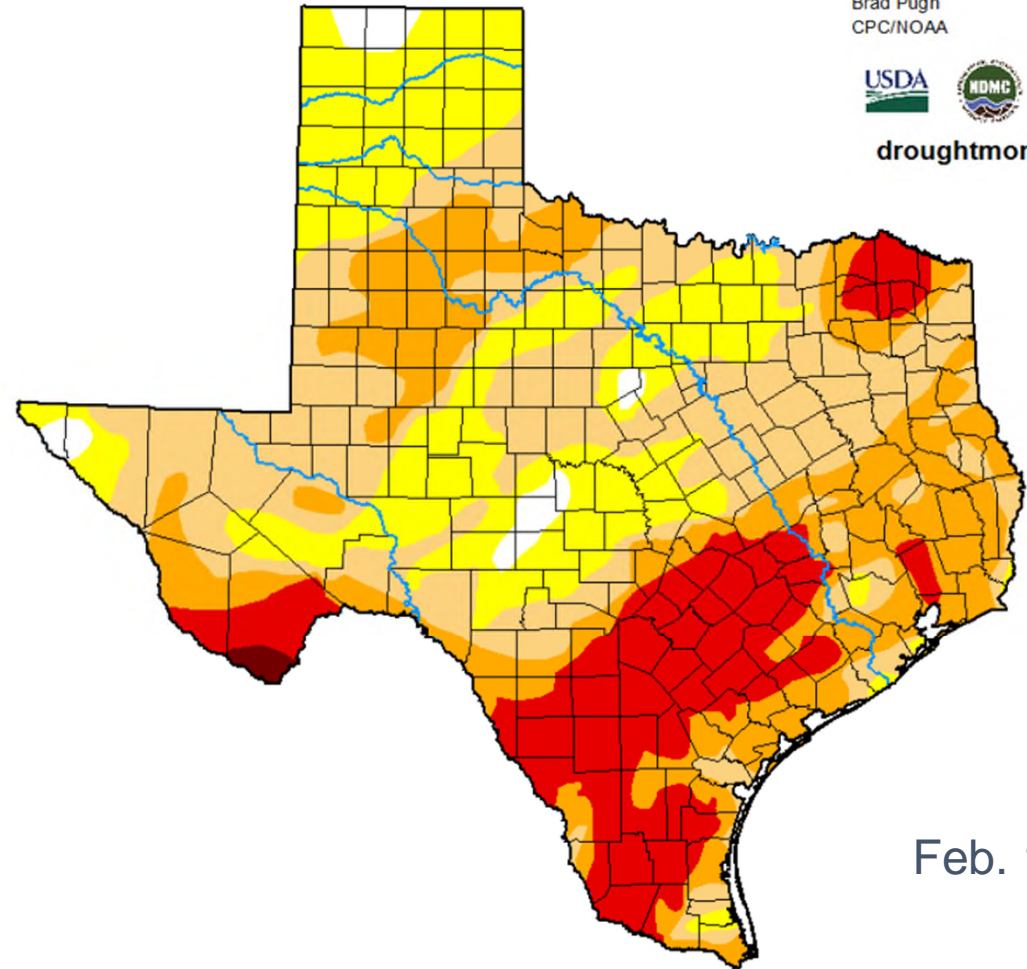
Brad Pugh
CPC/NOAA



droughtmonitor.unl.edu



Feb. 11, 2025



Feb. 10, 2026

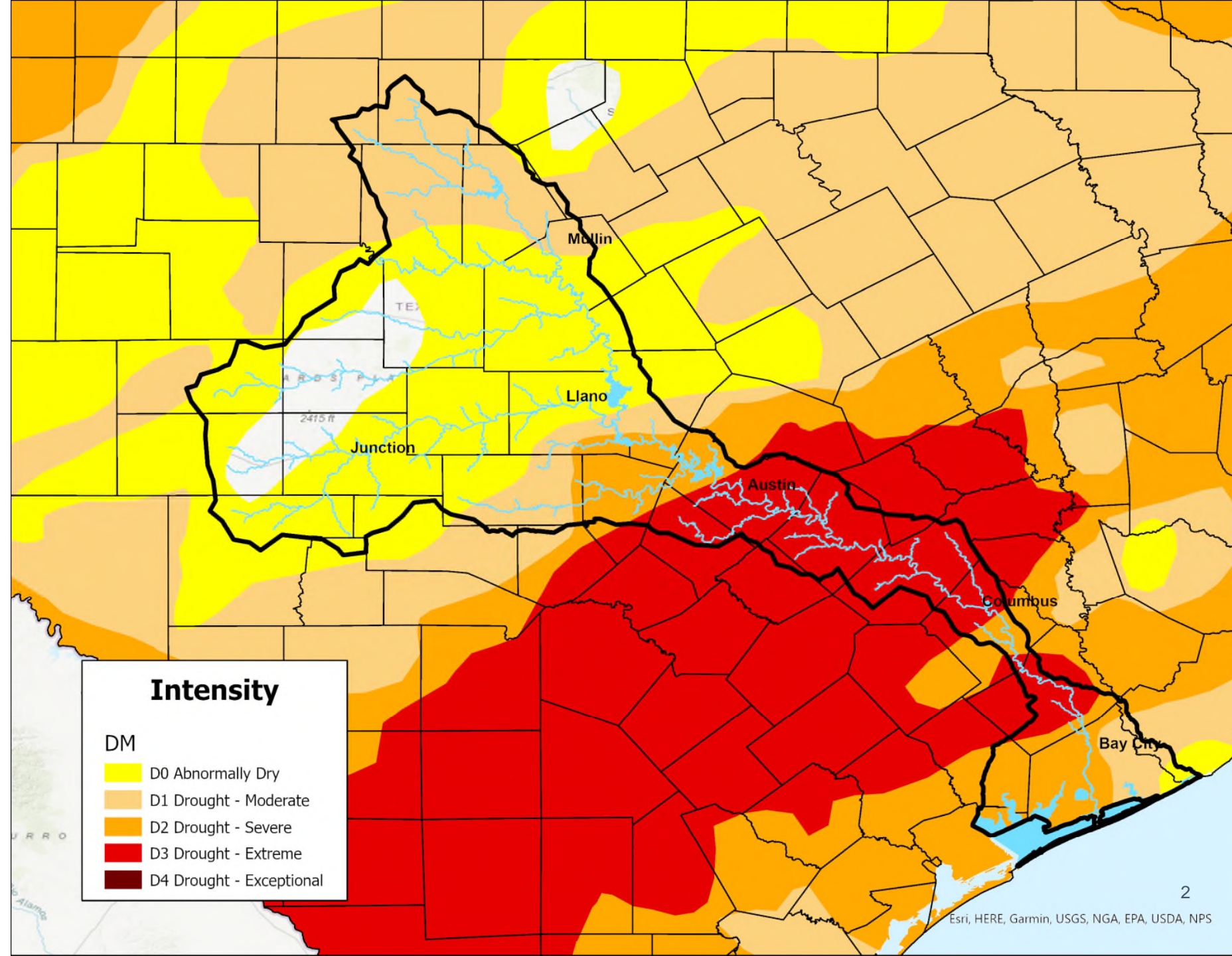
Intensity:

- None
- D0 (Abnormally Dry)
- D1 (Moderate Drought)
- D2 (Severe Drought)
- D3 (Extreme Drought)
- D4 (Exceptional Drought)
- No Data

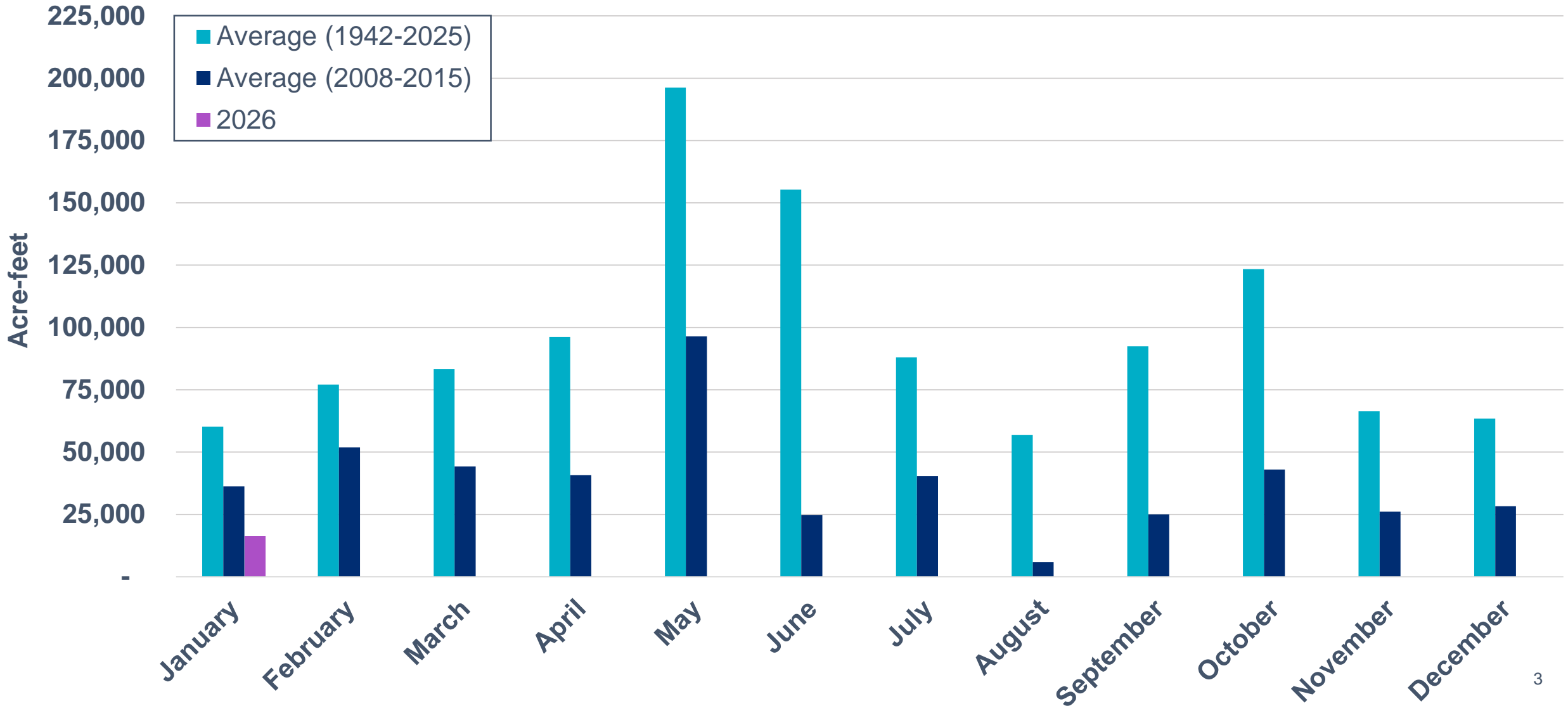
U.S. Drought Monitor

Lower Colorado River Basin

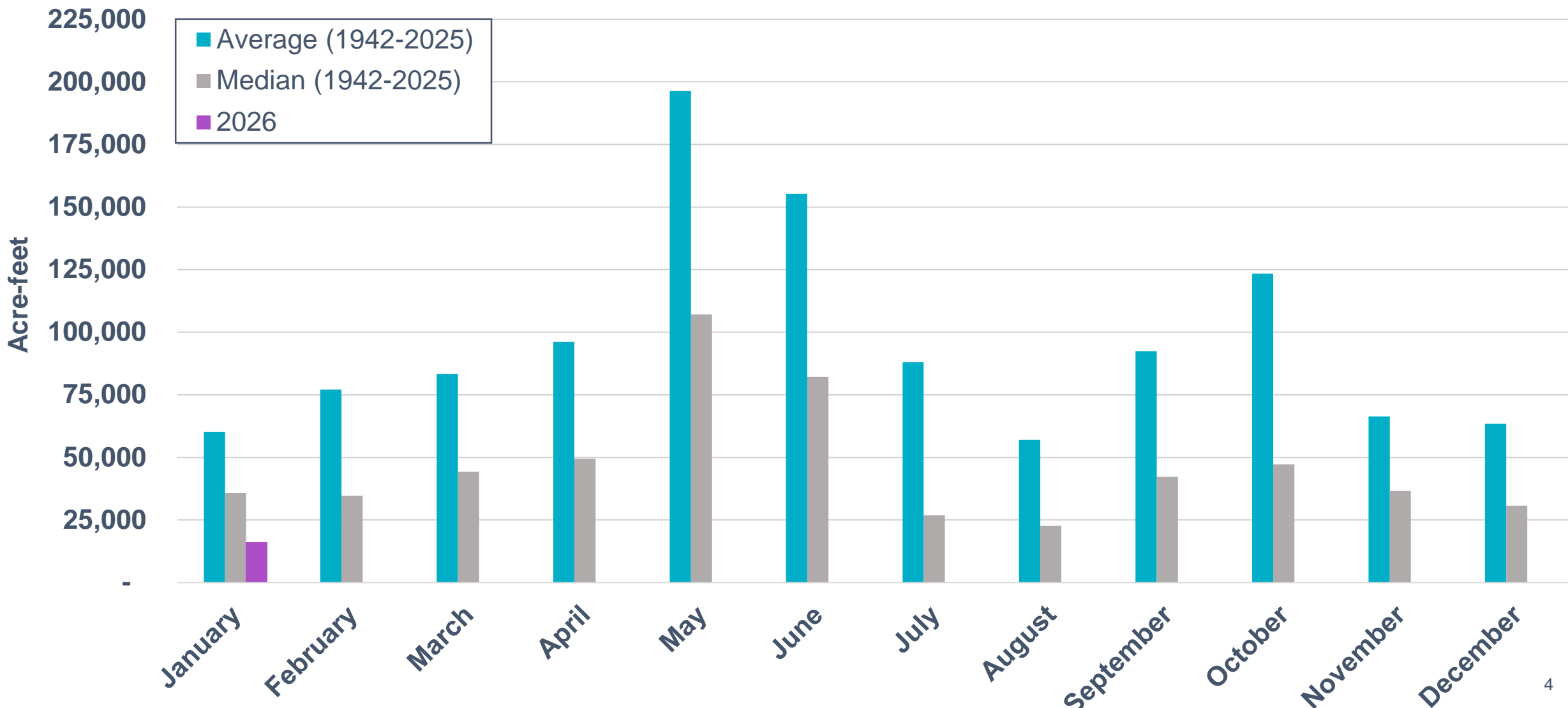
As of Feb. 10, 2026



Water Flowing Into Lakes Buchanan and Travis

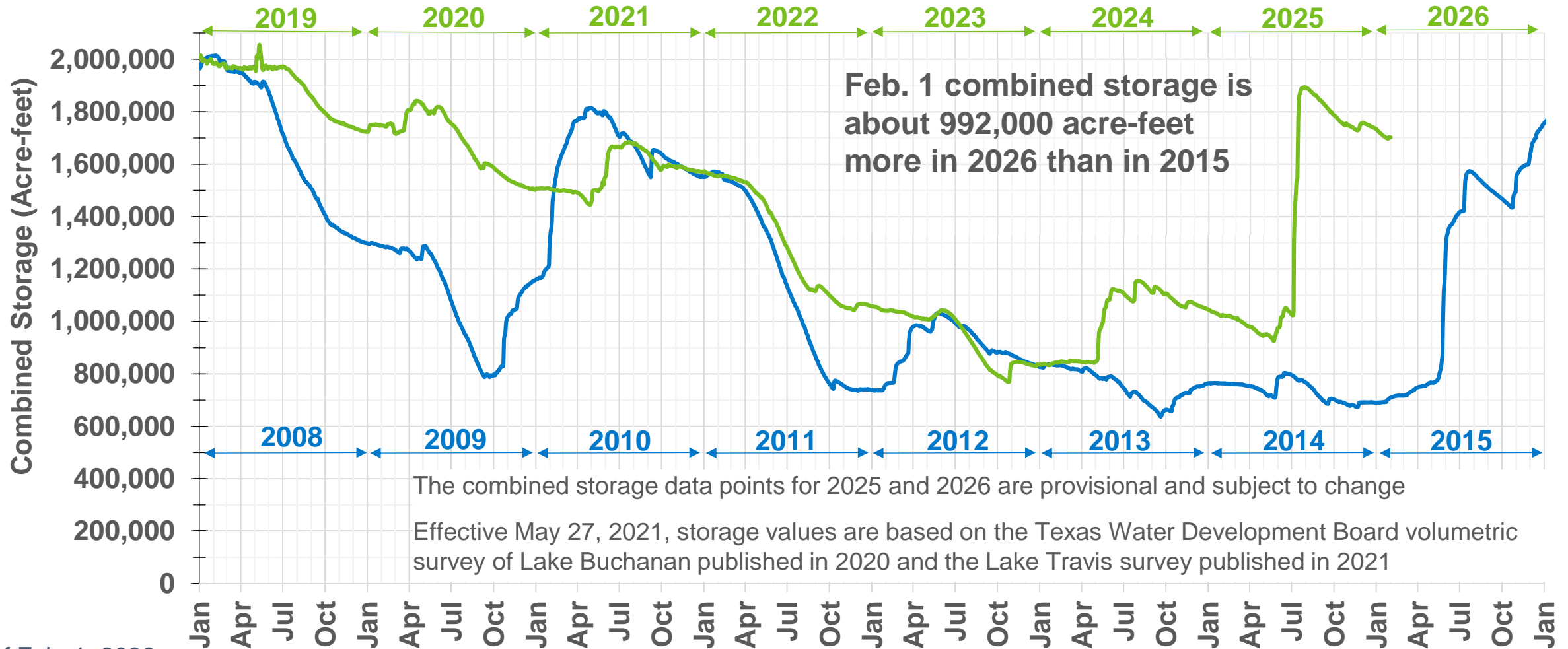


Water Flowing Into Lakes Buchanan and Travis – Median

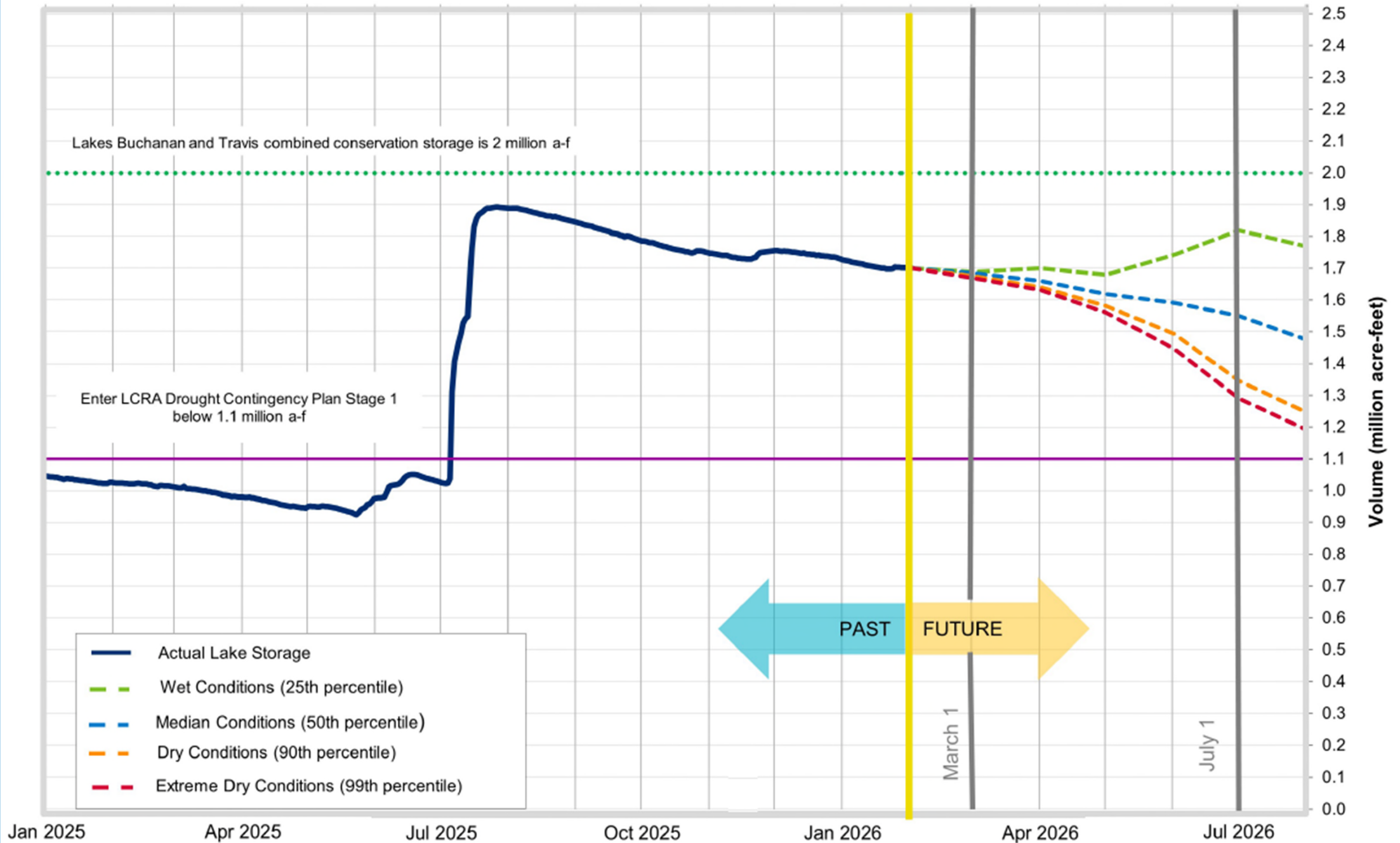


Combined Storage of Lakes Buchanan and Travis

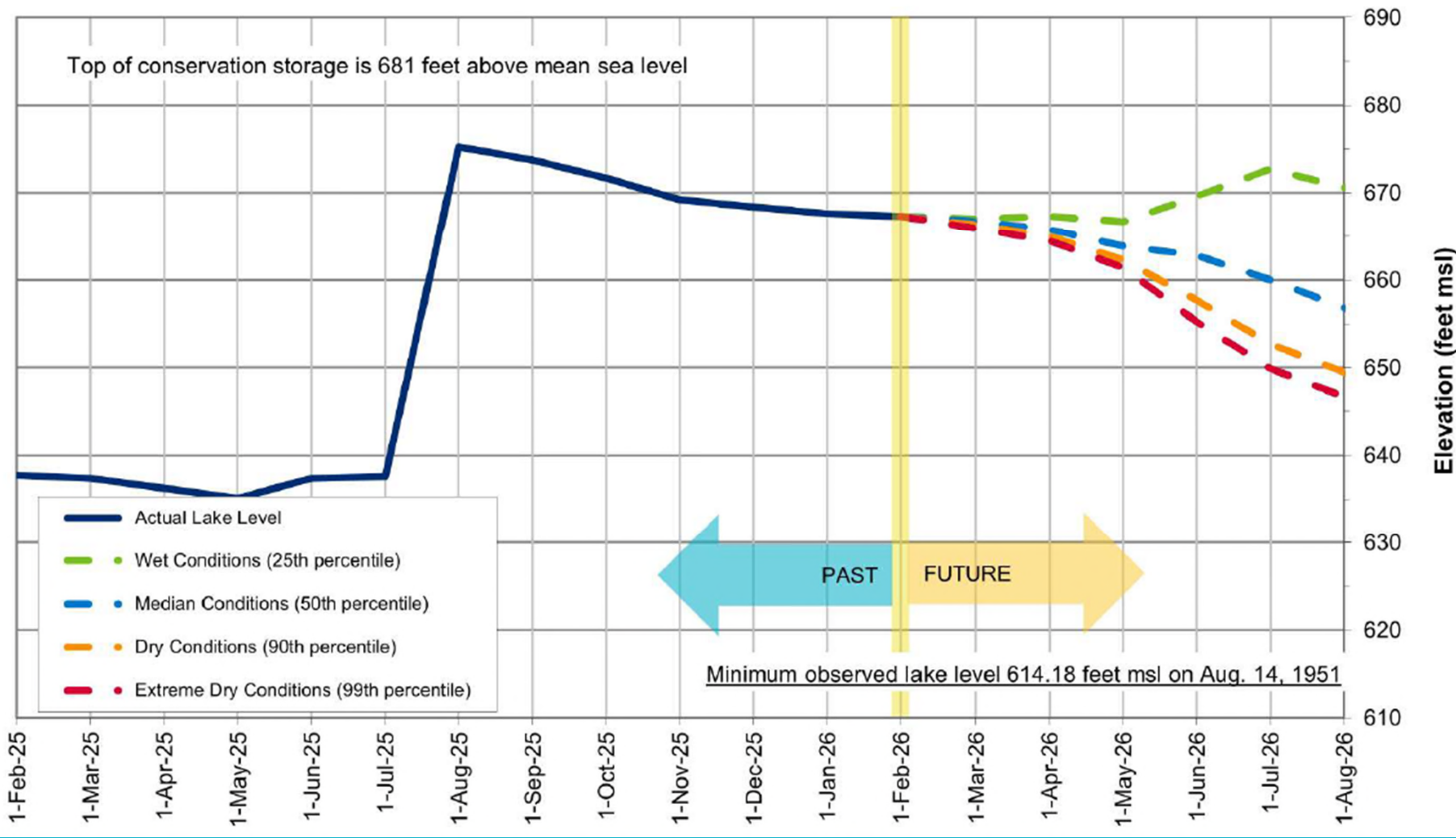
Comparison of 2019-2026 and 2008-2015



Lakes Buchanan and Travis Total Combined Storage Projections



Lake Travis Level Projection*

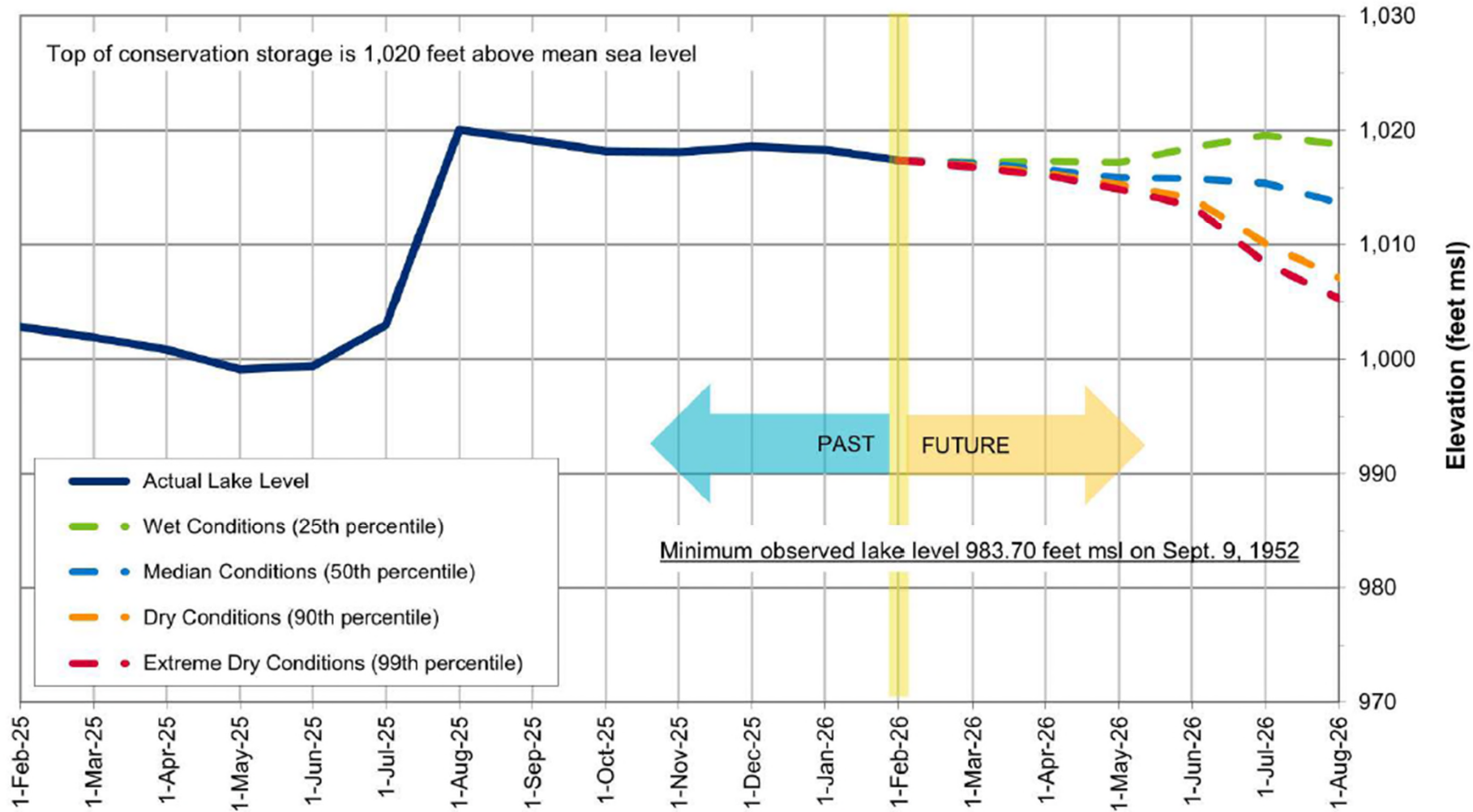


**Average for February:
667.43 feet msl**

**Historic low (1951):
614.18 feet msl**

*Based on results from the draft stochastic model under development to reflect provisions of the 2020 Water Management Plan

Lake Buchanan Level Projection*



**Average for February:
1,010.76 feet msl**

**Historic low (1952):
983.70 feet msl**

*Based on results from the draft stochastic model under development to reflect provisions of the 2020 Water Management Plan



Lake Level Comparisons

	Feb. 1, 2025	Feb. 1, 2026
Lake Travis (feet msl)	637.37	667.34
Lake Buchanan (feet msl)	1,002.54	1,017.41
Combined storage* (a-f)	1,024,005	1,698,993

*For purposes of the 2020 Water Management Plan, the combined storage is defined as the total of the daily average volume of water in lakes Buchanan and Travis. This determination excludes any water in Lake Buchanan above elevation 1,020 feet msl and any water in Lake Travis above elevation 681 feet msl.



LCRA

ENERGY • WATER • COMMUNITY SERVICES