

LOWER COLORADO RIVER AUTHORITY
**WATER USE
SUMMARY 2025**



For much of 2025, the lower Colorado River basin experienced warmer and drier-than-average conditions. Most of the basin saw below-normal rainfall totals for the year, with deficits of 6 to 12 inches across Central Texas and the middle Texas Coast.

In early July, a significant rainfall event interrupted the persistent dry weather and produced 10 to 20+ inches of rain across much of the Hill Country, resulting in the second wettest July on record for the region. The combined storage of lakes Buchanan and Travis increased by about 865,000 acre-feet, from 51% to 95% full. By the end of July, Lake Buchanan was full, and Lake Travis was 6 feet below the top of its water supply elevation.

Inflows into lakes Buchanan and Travis were nearly nine times the historical average in July, near average in November, and well below average during the rest of the year.

Arbuckle Reservoir in Wharton County, LCRA's newest reservoir, came online in late 2025 and began providing water to LCRA customers in 2026.



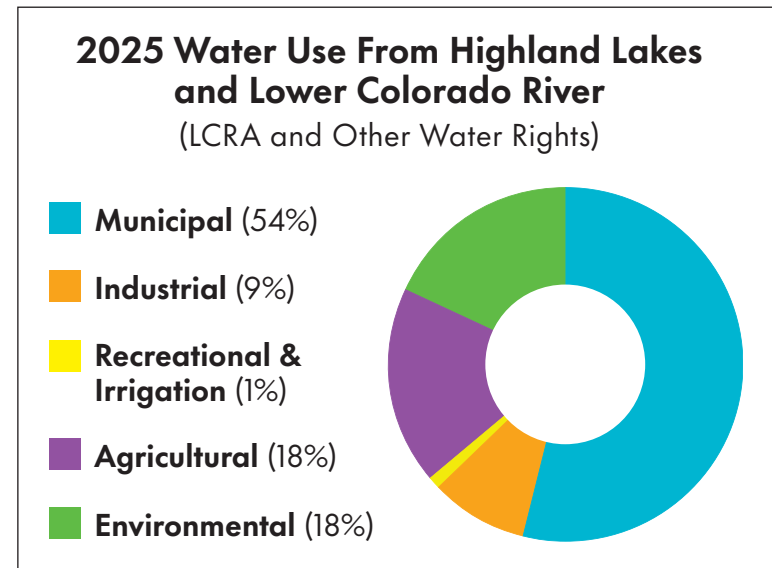
WATER USE BY SOURCE

LCRA uses two basic sources of water to meet customer and environmental needs: water stored in lakes Buchanan and Travis and water naturally flowing in the Colorado River. When the natural flow into the Highland Lakes is greater than customer and environmental needs, LCRA stores the excess in lakes Buchanan and Travis for later use.

- Highland Lakes water use** – Contracts for water stored in lakes Buchanan and Travis can be for firm or interruptible supply. LCRA also supplies water from the Highland Lakes to help maintain environmental flows, as required by the state-approved Water Management Plan. In 2025, the Highland Lakes supplied 270,859 acre-feet of water for all uses.
 - Firm water contracts** – These contracts supply cities, businesses and industries that need a reliable long-term water supply. Firm supply is expected to be available through a repeat of the driest conditions the region has experienced. Firm customers accounted for 178,267 acre-feet, or about 66% of all water used from the Highland Lakes, in 2025.
 - Interruptible water contracts** – These contracts supply agricultural customers. Interruptible water is subject to cutbacks during drought conditions. Interruptible customers used 4,675 acre-feet, about 2% of all water used from the Highland Lakes, in 2025.
 - Environmental** – From time to time, LCRA releases water from the Highland Lakes to meet environmental flow requirements for the Colorado River downstream of Austin and for Matagorda Bay. In 2025, LCRA released 87,917 acre-feet, or about 32% of all water used from the Highland Lakes, for environmental flows.
- Colorado River water use** – In addition to the rights to water from the Highland Lakes, LCRA owns and manages other rights to the natural flow of the Colorado River. In 2025, a total of 115,013 acre-feet of water was supplied from the Colorado River for agricultural, municipal, industrial, recreation and firm irrigation uses under these water rights owned or co-owned by LCRA.

WATER RIGHTS	2025 USE (in acre-feet)
LCRA Garwood*	96,328
LCRA and South Texas Project*	7,753
LCRA Lakeside*	0
LCRA Gulf Coast*	10,127
LCRA Pierce Ranch*	805
LCRA Lakes Buchanan and Travis	270,859
Subtotal — LCRA	385,872
City of Austin Water Rights*	99,623
Bastrop Energy Partners, LP*	180
Subtotal — Other	99,803
TOTAL	485,675

* Water use from the Colorado River was 214,816 acre-feet.



HOW DOES 2025 COMPARE?

TYPE OF WATER USE*	2021	2022	2023	2024	2025
Municipal (firm customers)	249,011	266,848	274,946	250,238	260,689
Water from the Highland Lakes	118,821	198,971	187,868	130,092	155,683
Water from the Colorado River†	130,190	67,877	87,078	120,146	105,006
Industrial (firm customers)	113,594	51,790	77,141	87,705	42,751
Water from the Highland Lakes	12,390	22,722	15,974	10,231	17,715
Water from the Colorado River†	101,204	29,068	61,167	77,474	25,036
Recreational & Irrigation (firm customers)	4,204	6,898	7,041	5,990	6,513
Water from the Highland Lakes	4,204	6,898	7,041	3,915	4,869
Water from the Colorado River	0	0	0	2,075	1,644
Agricultural (interruptible customers)	171,900	258,704	88,891	73,275	87,805
Water from the Highland Lakes	45,109	160,213	9,079	529	4,675
Water from the Colorado River	126,791	98,491	79,812	72,746	83,130
Environmental‡	31,317	40,510	35,287	46,296	87,917
(from the Highland Lakes)					
TOTAL WATER USE	570,026	624,750	483,306	463,504	485,675

* Water use is in acre-feet.

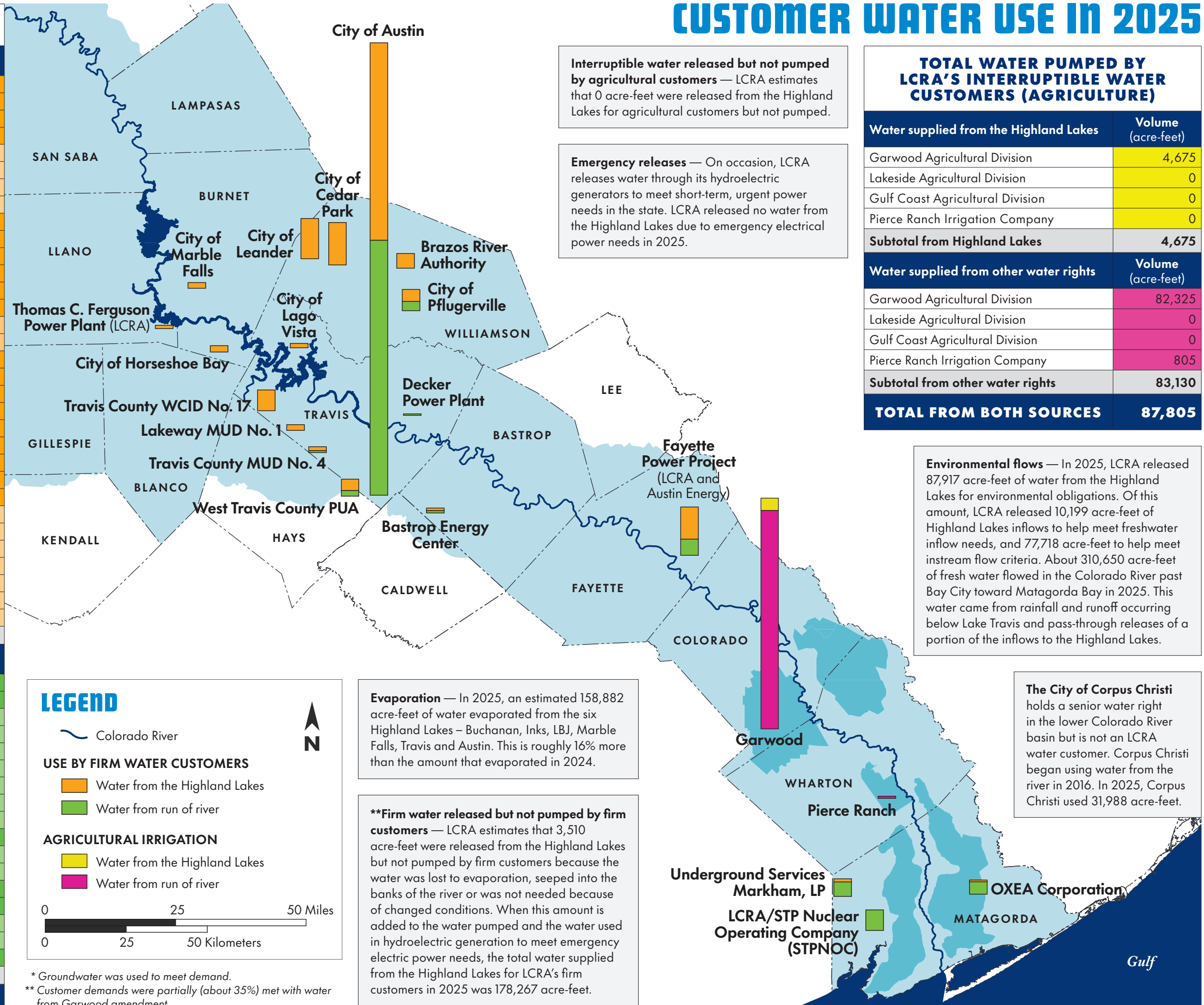
† Reported use includes water available under water rights held by the City of Austin and Bastrop Energy Partners, LP, and held jointly by South Texas Project and LCRA.

‡ Environmental releases are made to meet environmental requirements set out in the LCRA Water Management Plan. Releases for downstream customers and runoff flowing into the river and bay also help satisfy environmental needs.

CUSTOMER WATER USE IN 2025

TOTAL WATER PUMPED BY LCRA'S FIRM WATER CUSTOMERS

Water supplied from the Highland Lakes	Volume (acre-feet)
City of Austin, municipal and parks	74,482
City of Cedar Park	15,981
City of Leander	15,184
LCRA power plants	10,069
• Fayette Power Project (LCRA share)**	8,830
• Sim Gideon Power Plant*	0
• Lost Pines 1 Power Project*	0
• Thomas C. Ferguson Power Plant	1,239
Travis County WCID No. 17	7,820
Brazos River Authority	5,529
City of Pflugerville**	4,543
West Travis County PUA**	4,287
Domestic Water Users on the Highland Lakes	3,780
Austin Energy (AE) Power Plants	3,304
• Fayette Power Project (AE share)	3,304
• Decker Power Plant	0
City of Horseshoe Bay	2,385
Lakeway MUD No. 1	2,161
City of Marble Falls	2,141
City of Lago Vista	1,650
Travis County MUD No. 4**	1,464
Underground Services Markham LLC	1,174
Bastrop Energy Partners, LP**	979
OXEA Corporation	548
Other firm customers	17,276
• Diverted from Lake Buchanan	380
• Diverted from Inks Lake	726
• Diverted from Lake LBJ	3,399
• Diverted from Lake Marble Falls	0
• Diverted from Lake Travis	6,631
• Diverted from Lake Austin**	5,181
• Diverted from downstream of Lake Austin**	959
Subtotal from Highland Lakes**	174,757
Water supplied from other water rights	Volume (acre-feet)
City of Austin, municipal and parks	96,132
LCRA use – Garwood amendment	14,003
• City of Pflugerville	3,462
• Fayette Power Project (LCRA share)	2,724
• LCRA other municipal use	2,566
• West Travis County PUA	2,121
• LCRA industrial, firm irrigation and recreation	1,710
• Travis County MUD No. 4	725
• Bastrop Energy Partners, LP	695
LCRA Gulf Coast industrial use	10,127
• Underground Services Markham, LP	5,461
• OXEA Corporation	4,666
LCRA/STP Nuclear Operating Company	7,753
Austin Energy (AE) power plants	3,491
• Fayette Power Project (AE share)	3,366
• Decker Power Plant	125
Bastrop Energy Partners, LP	180
Subtotal from other water rights	131,686
TOTAL FROM BOTH SOURCES	306,443



Interruptible water released but not pumped by agricultural customers — LCRA estimates that 0 acre-feet were released from the Highland Lakes for agricultural customers but not pumped.

Emergency releases — On occasion, LCRA releases water through its hydroelectric generators to meet short-term, urgent power needs in the state. LCRA released no water from the Highland Lakes due to emergency electrical power needs in 2025.

TOTAL WATER PUMPED BY LCRA'S INTERRUPTIBLE WATER CUSTOMERS (AGRICULTURE)

Water supplied from the Highland Lakes	Volume (acre-feet)
Garwood Agricultural Division	4,675
Lakeside Agricultural Division	0
Gulf Coast Agricultural Division	0
Pierce Ranch Irrigation Company	0
Subtotal from Highland Lakes	4,675
Water supplied from other water rights	Volume (acre-feet)
Garwood Agricultural Division	82,325
Lakeside Agricultural Division	0
Gulf Coast Agricultural Division	0
Pierce Ranch Irrigation Company	805
Subtotal from other water rights	83,130
TOTAL FROM BOTH SOURCES	87,805

Environmental flows — In 2025, LCRA released 87,917 acre-feet of water from the Highland Lakes for environmental obligations. Of this amount, LCRA released 10,199 acre-feet of Highland Lakes inflows to help meet freshwater inflow needs, and 77,718 acre-feet to help meet instream flow criteria. About 310,650 acre-feet of fresh water flowed in the Colorado River past Bay City toward Matagorda Bay in 2025. This water came from rainfall and runoff occurring below Lake Travis and pass-through releases of a portion of the inflows to the Highland Lakes.

The City of Corpus Christi holds a senior water right in the lower Colorado River basin but is not an LCRA water customer. Corpus Christi began using water from the river in 2016. In 2025, Corpus Christi used 31,988 acre-feet.

LEGEND

Colorado River

USE BY FIRM WATER CUSTOMERS

- Water from the Highland Lakes
- Water from run of river

AGRICULTURAL IRRIGATION

- Water from the Highland Lakes
- Water from run of river

0 25 50 Miles
0 25 50 Kilometers

Evaporation — In 2025, an estimated 158,882 acre-feet of water evaporated from the six Highland Lakes – Buchanan, Inks, LBJ, Marble Falls, Travis and Austin. This is roughly 16% more than the amount that evaporated in 2024.

****Firm water released but not pumped by firm customers** — LCRA estimates that 3,510 acre-feet were released from the Highland Lakes but not pumped by firm customers because the water was lost to evaporation, seeped into the banks of the river or was not needed because of changed conditions. When this amount is added to the water pumped and the water used in hydroelectric generation to meet emergency electric power needs, the total water supplied from the Highland Lakes for LCRA's firm customers in 2025 was 178,267 acre-feet.

* Groundwater was used to meet demand.
** Customer demands were partially (about 35%) met with water from Garwood amendment.