



# Basin Conditions Update

LCRA Board Meeting

May 20, 2026

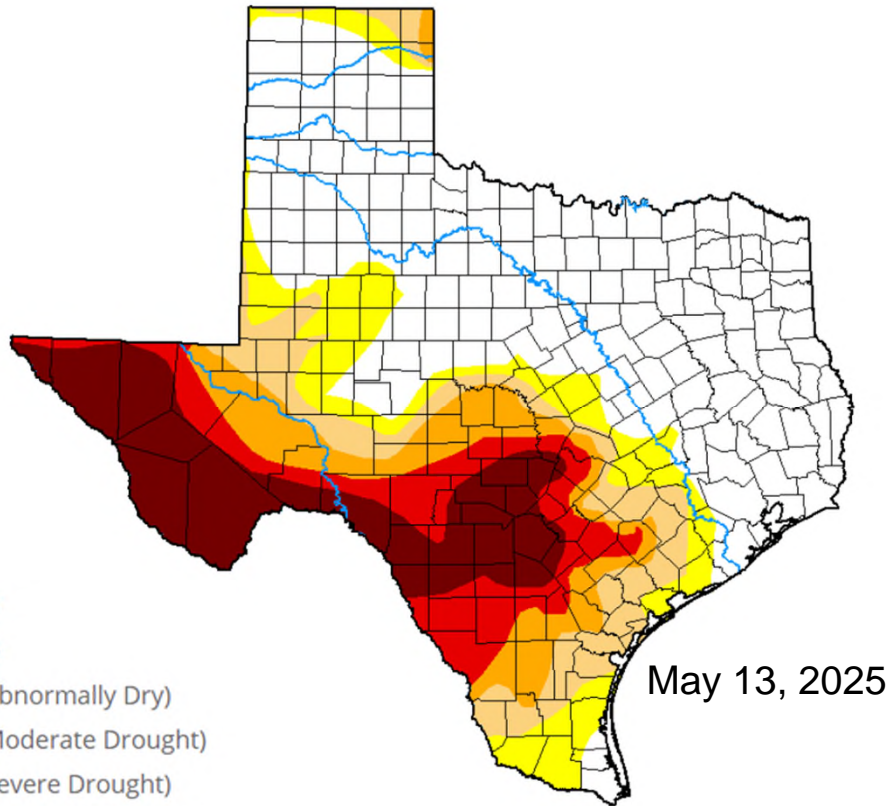
# U.S. Drought Monitor Texas

The Drought Monitor focuses on broad-scale conditions. Local conditions may vary. For more information on the Drought Monitor, go to <https://droughtmonitor.unl.edu/About.aspx>

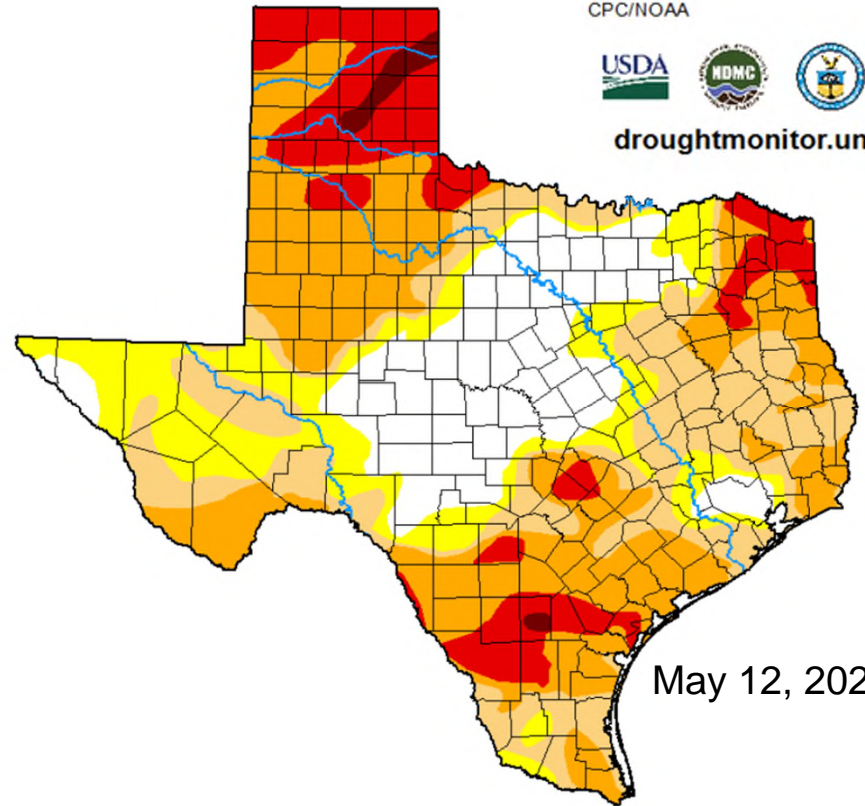
Author:  
Brad Pugh  
CPC/NOAA



[droughtmonitor.unl.edu](https://droughtmonitor.unl.edu)



May 13, 2025



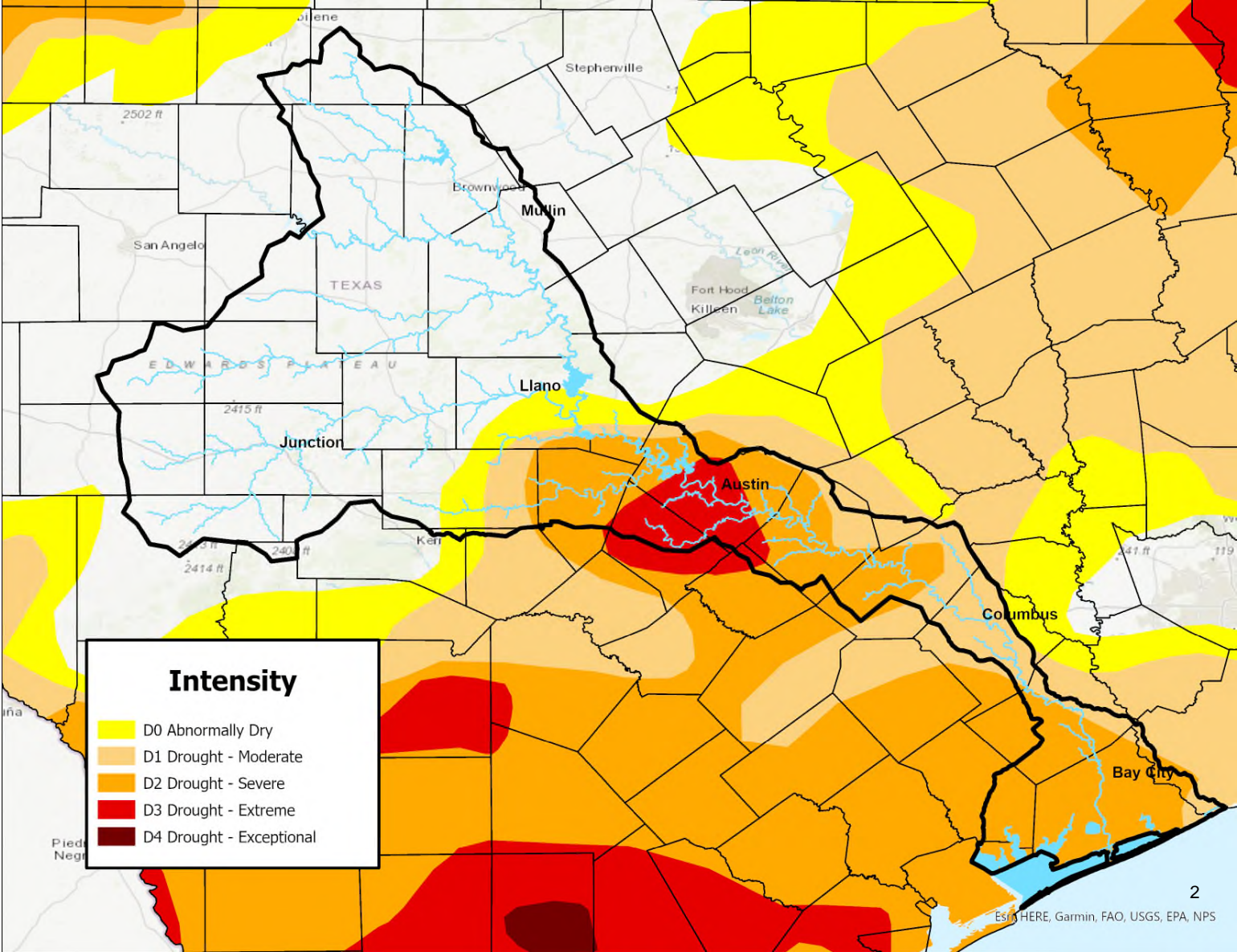
May 12, 2026

- Intensity:**
- None
  - D0 (Abnormally Dry)
  - D1 (Moderate Drought)
  - D2 (Severe Drought)
  - D3 (Extreme Drought)
  - D4 (Exceptional Drought)
  - No Data

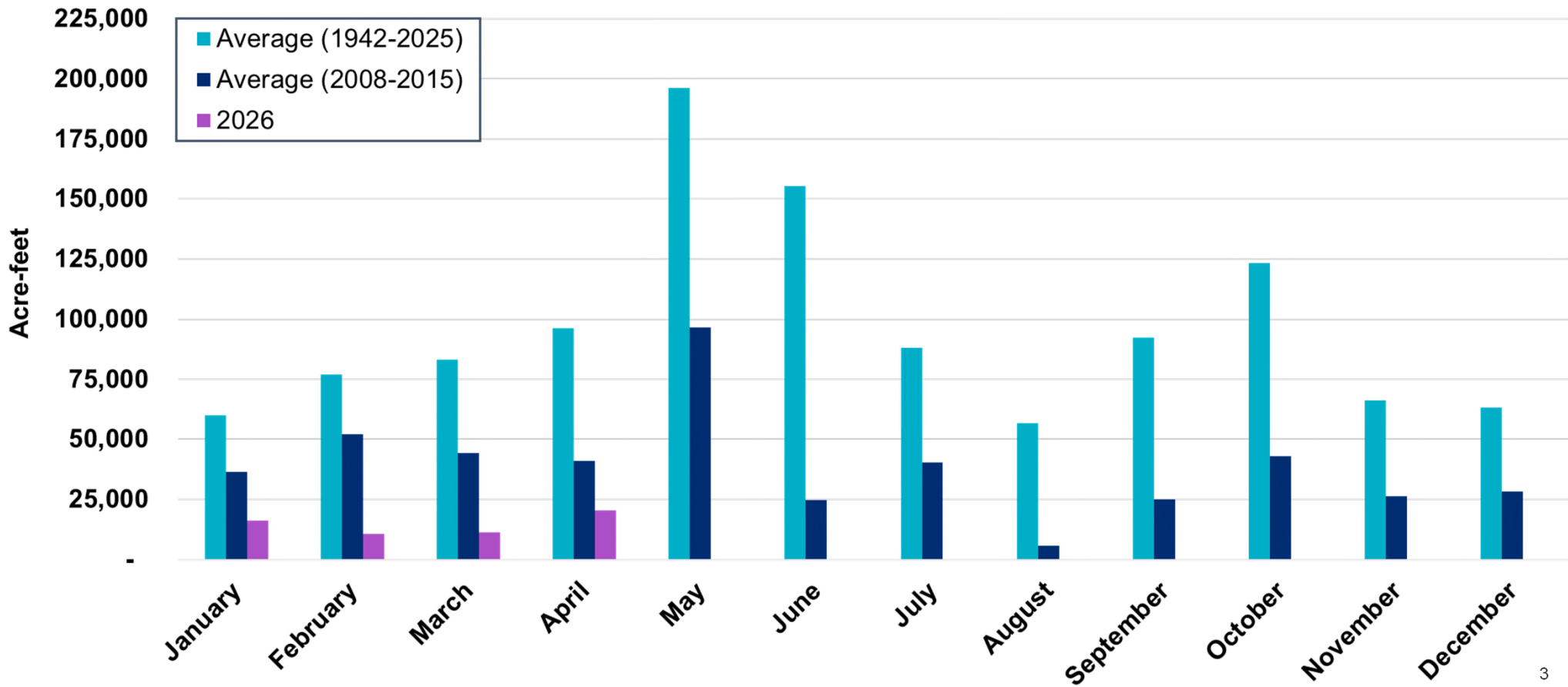
# U.S. Drought Monitor

## Lower Colorado River Basin

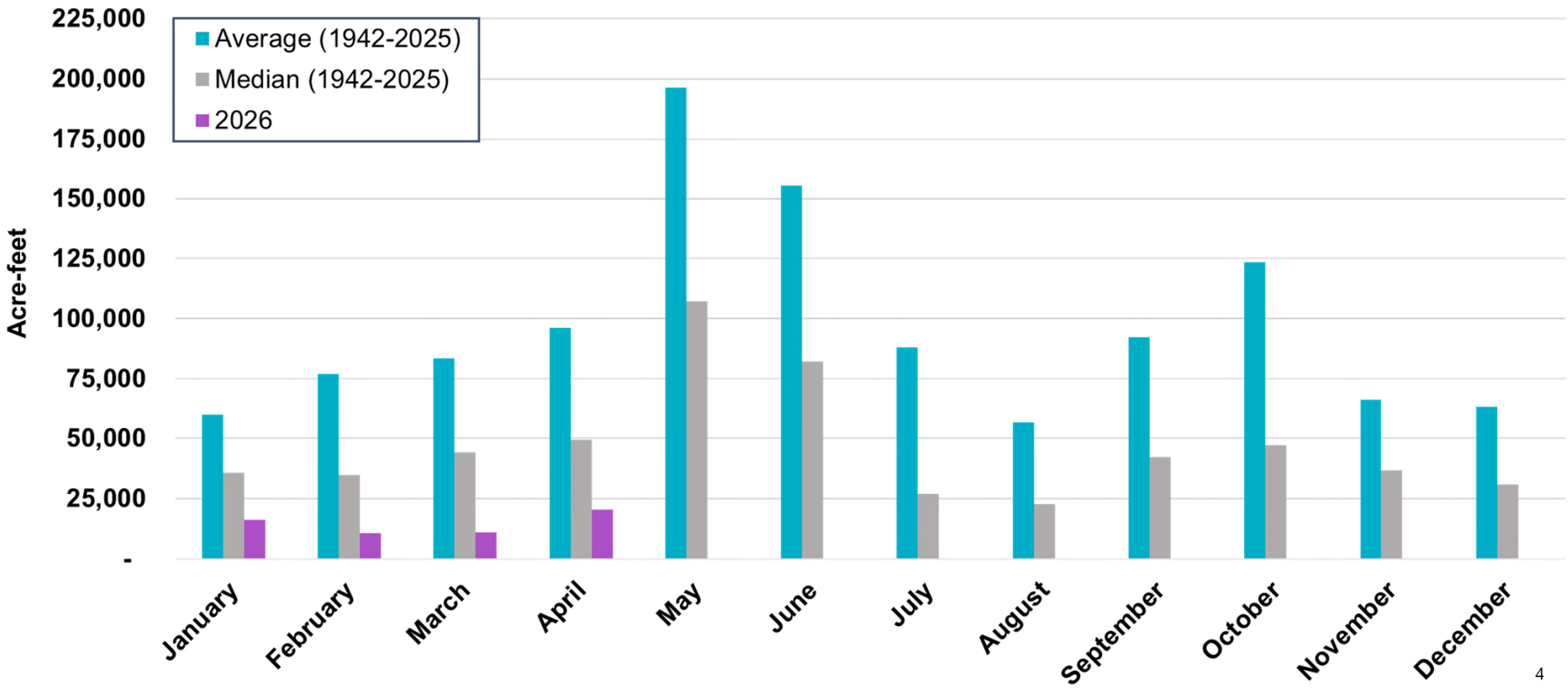
As of May 12, 2026



# Water Flowing Into Lakes Buchanan and Travis

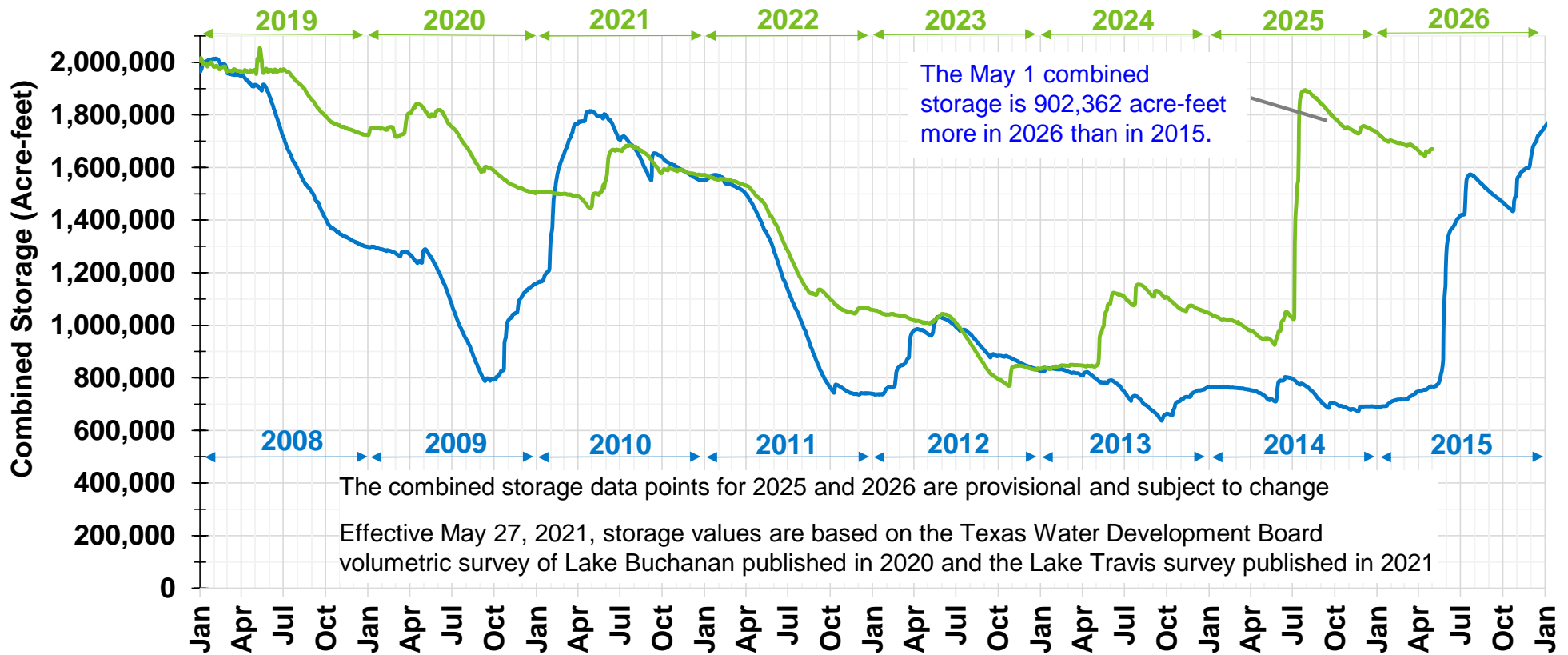


# Water Flowing Into Lakes Buchanan and Travis – Median



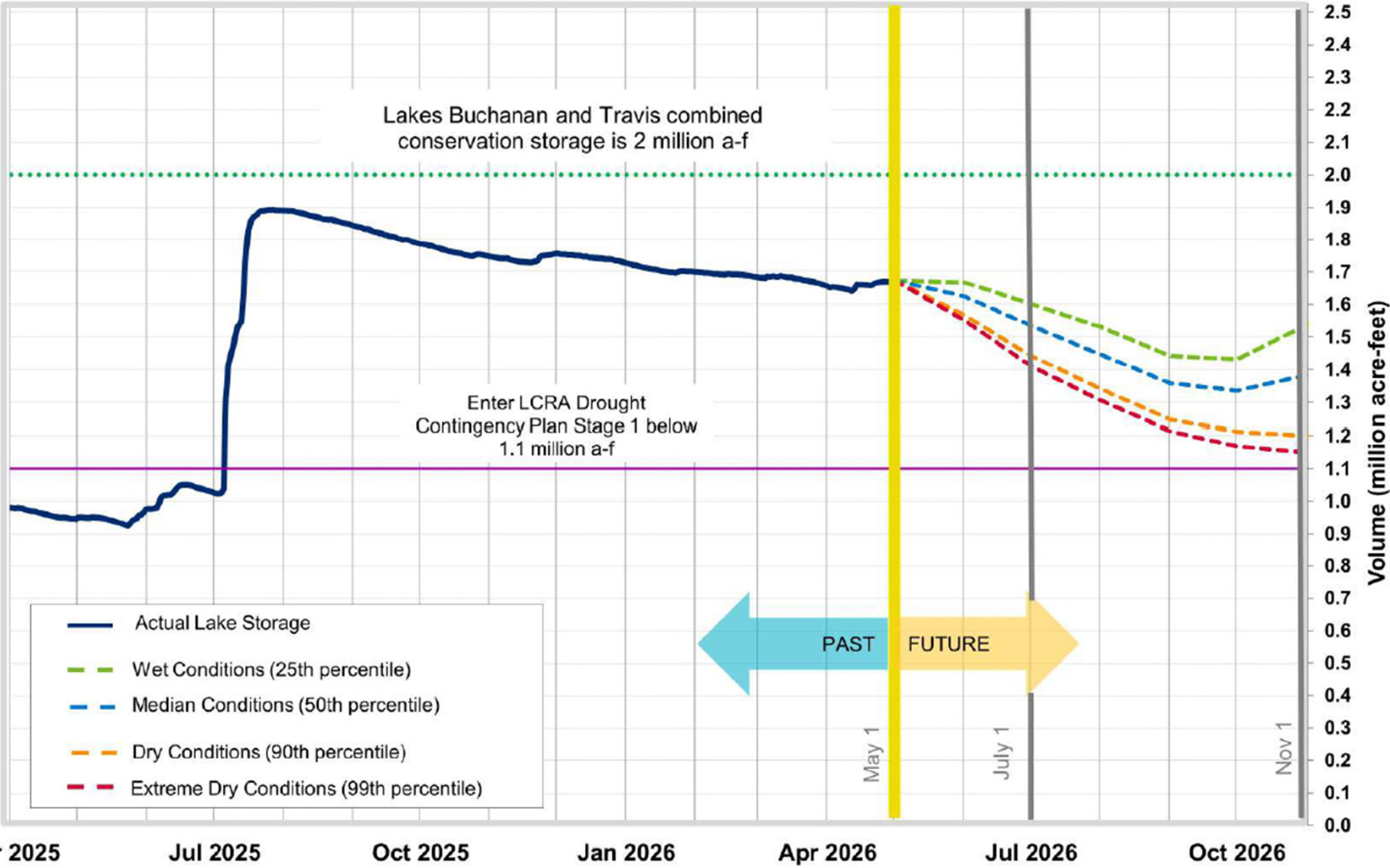
# Combined Storage of Lakes Buchanan and Travis

Comparison of 2019-2026 and 2008-2015

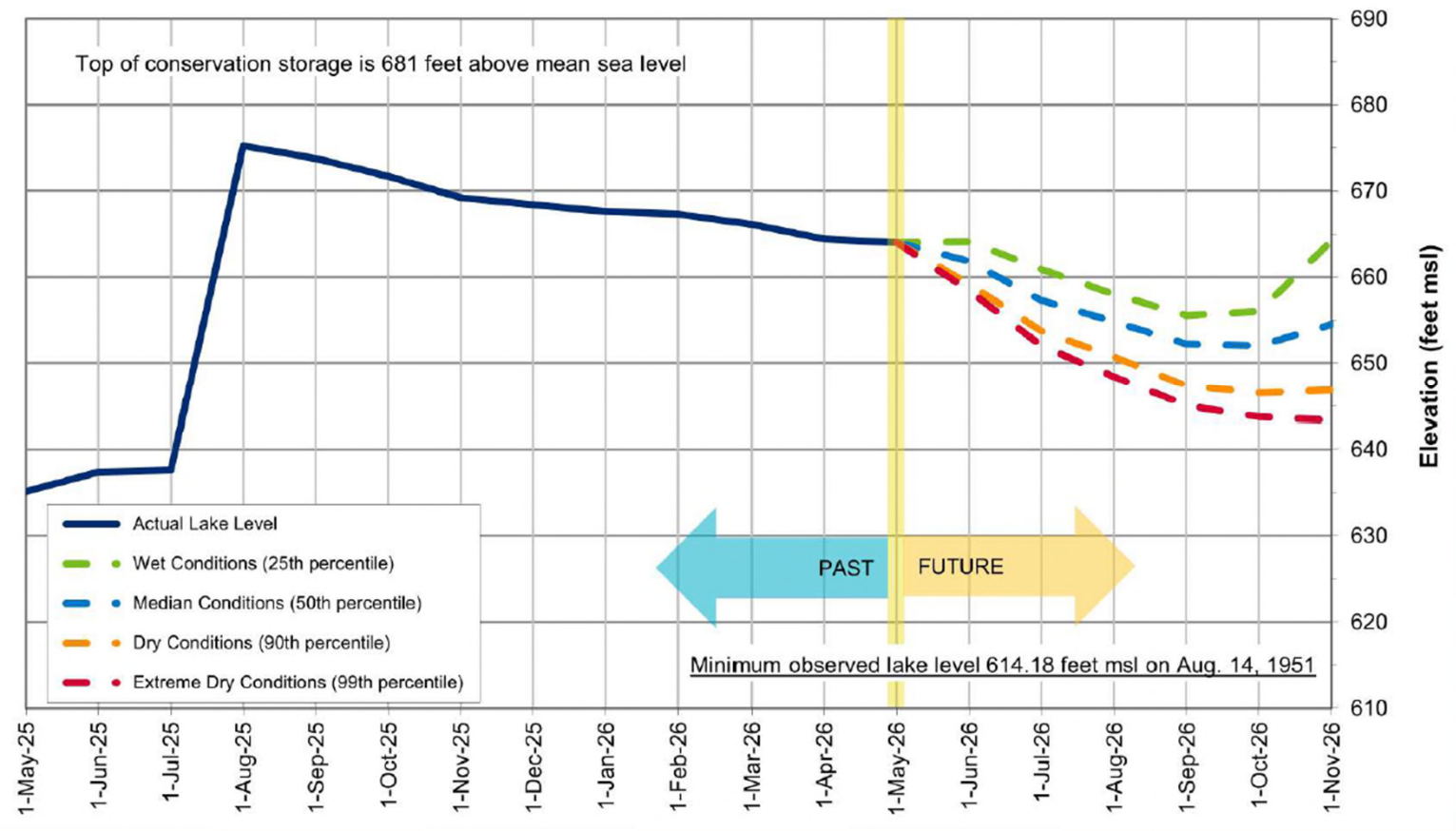


As of May 1, 2026

# Lakes Buchanan and Travis Total Combined Storage Projections



### Lake Travis Level Projection\*



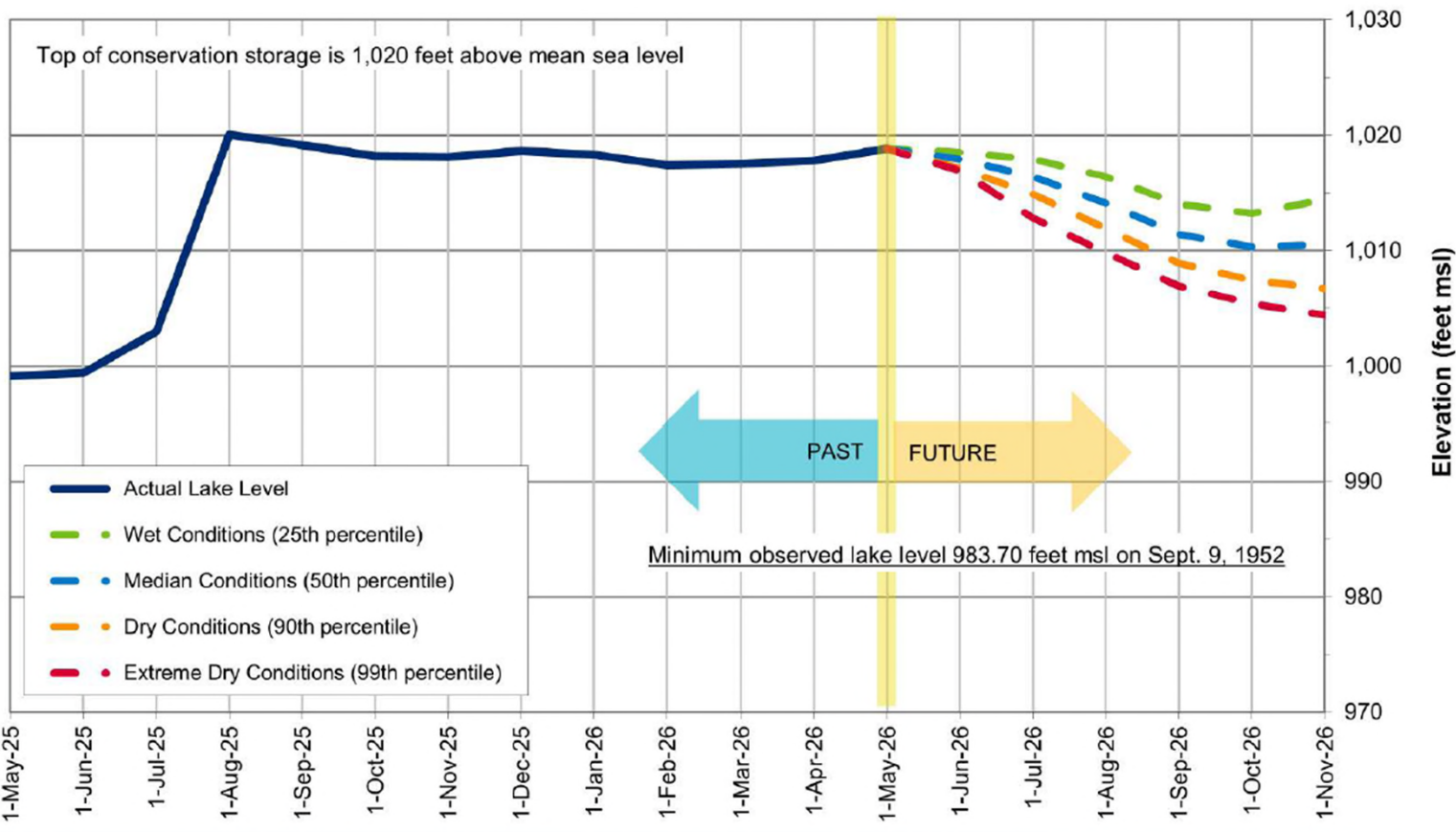
Average for May:  
668.72 feet msl

Historic low (1951):  
614.18 feet msl



\*Based on results from the draft stochastic model under development to reflect provisions of the 2020 Water Management Plan

### Lake Buchanan Level Projection\*

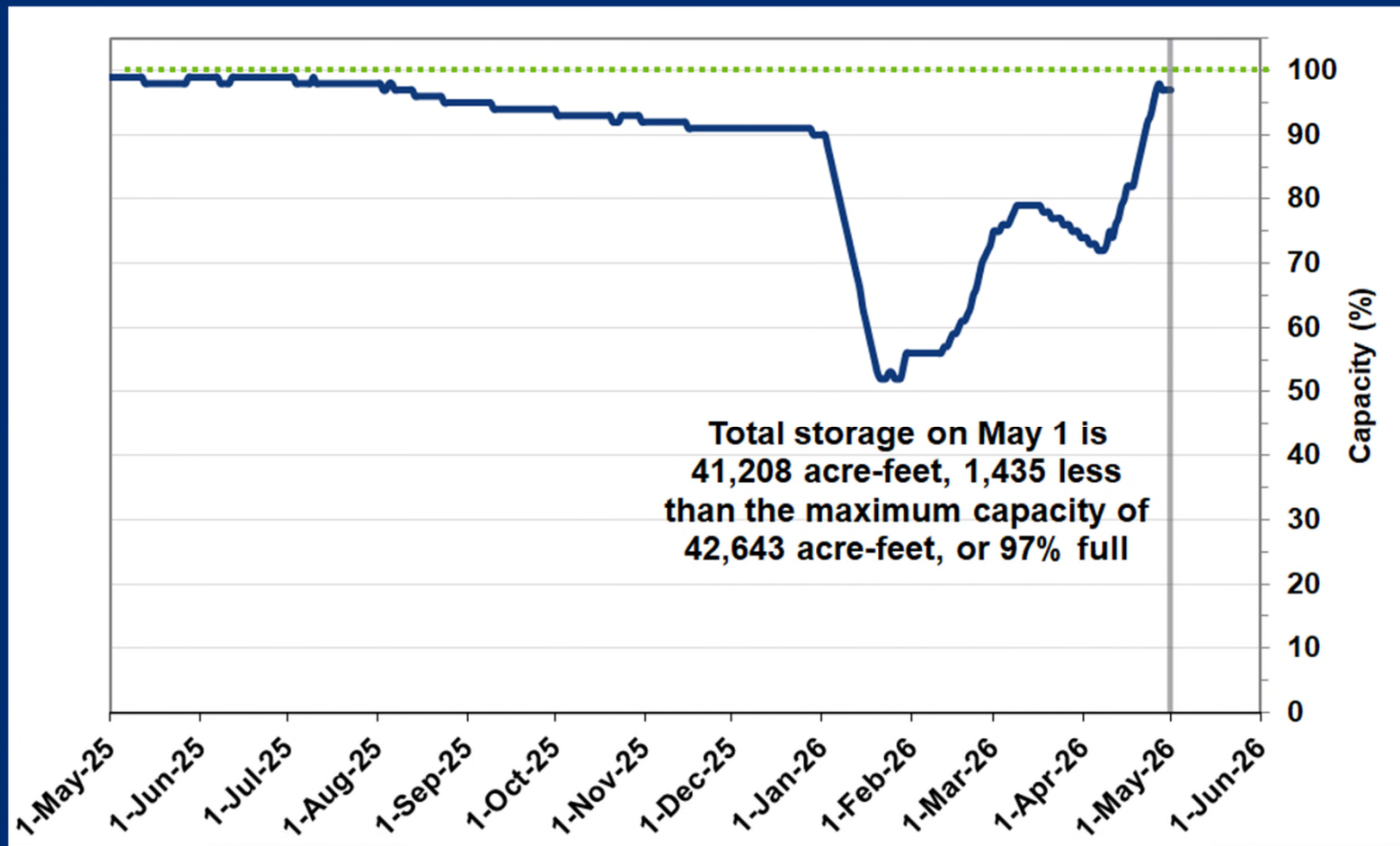


Average for May:  
1,012.65 feet msl

Historic low (1952):  
983.70 feet msl

\*Based on results from the draft stochastic model under development to reflect provisions of the 2020 Water Management Plan

# Arbuckle Reservoir Percent Full



# Lake Level Comparisons

	May 1, 2025	May 1, 2026
Lake Travis (feet msl)	635.61	663.87
Lake Buchanan (feet msl)	998.73	1,018.63
Combined storage* (a-f)	946,992	1,676,802



\*For purposes of the 2020 Water Management Plan, the combined storage is defined as the total of the daily average volume of water in lakes Buchanan and Travis. This determination excludes any water in Lake Buchanan above elevation 1,020 feet msl and any water in Lake Travis above elevation 681 feet msl.



**LCRA**

ENERGY • WATER • COMMUNITY SERVICES