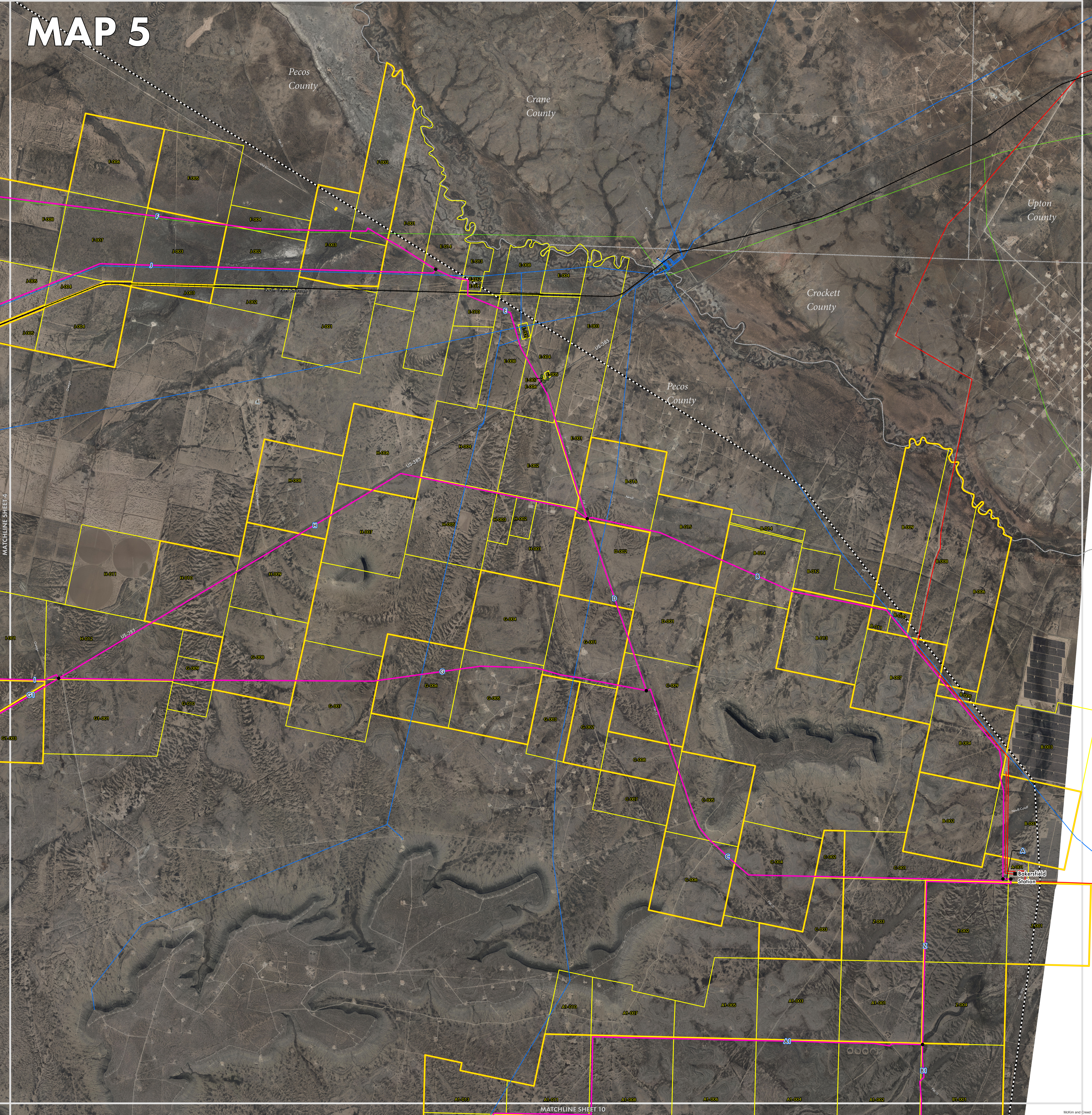
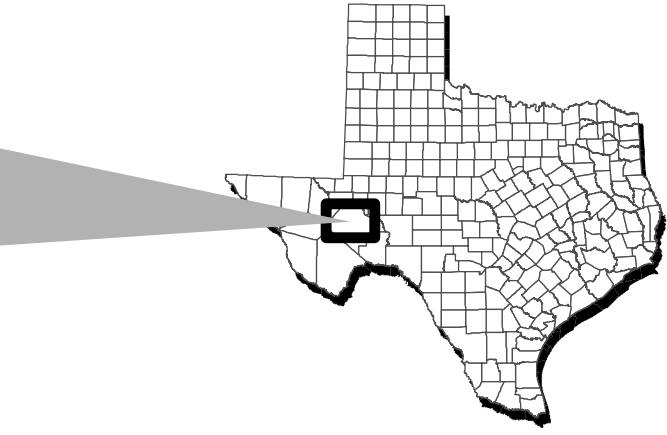
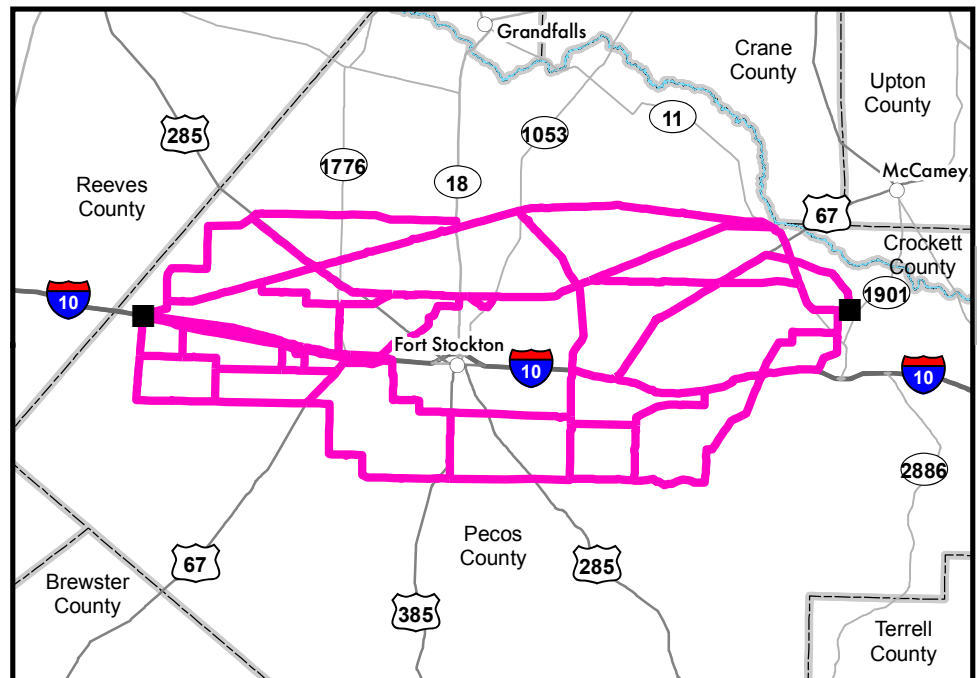


MAP 5

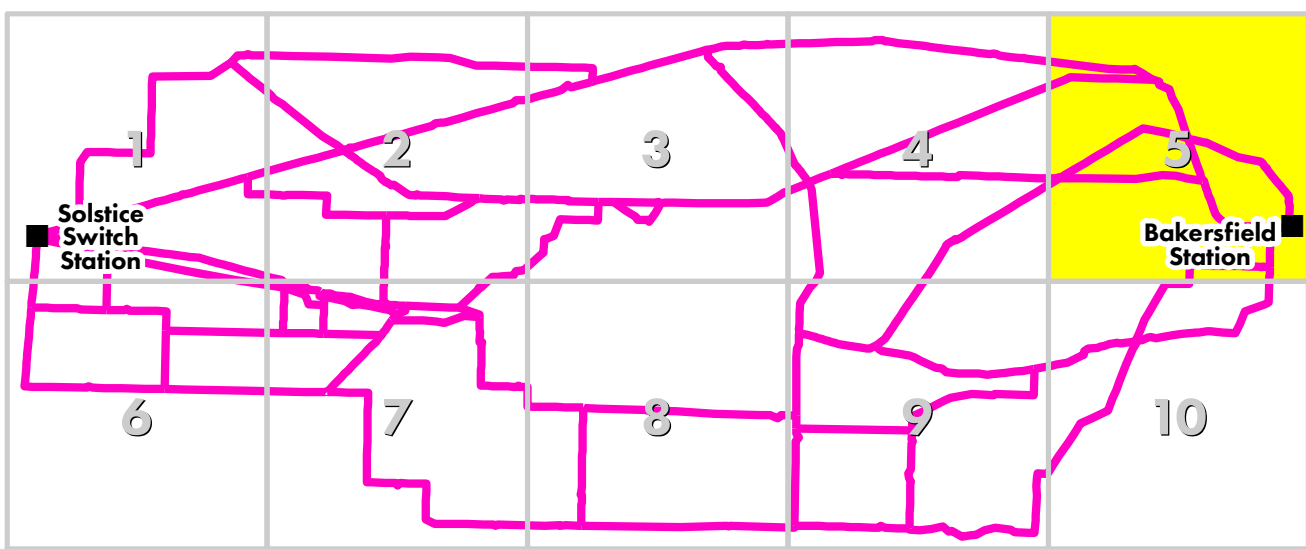


The Lower Colorado River Authority and its employees are committed to enhancing the lives of Texans through water stewardship, energy and community services. LCRA was created by the Texas Legislature in 1954. The organization neither levies taxes nor receives tax money. This map has been produced by the Lower Colorado River Authority for its own use. Accordingly, certain information, features or details may have been emphasized over others or may have been left out. LCRA does not warrant the accuracy of this map, either as to scale, accuracy or completeness.

Aerial Imagery: February 24-26, 2018
Parcel Date: 10/2018



Map Index



- Primary Route Segment
- Notified Parcel
- Grouped Parcel
- County Boundary
- Existing Substation
- Existing 69-kV Transmission Lines
- Existing 138-kV Transmission Lines
- Existing 345-kV Transmission Lines
- Railroads
- Habitable Structure
- Study Area

Bakersfield to Solstice
345-kV Transmission Line Project
Location of Directly Affected Parcels and Habitable Structures

