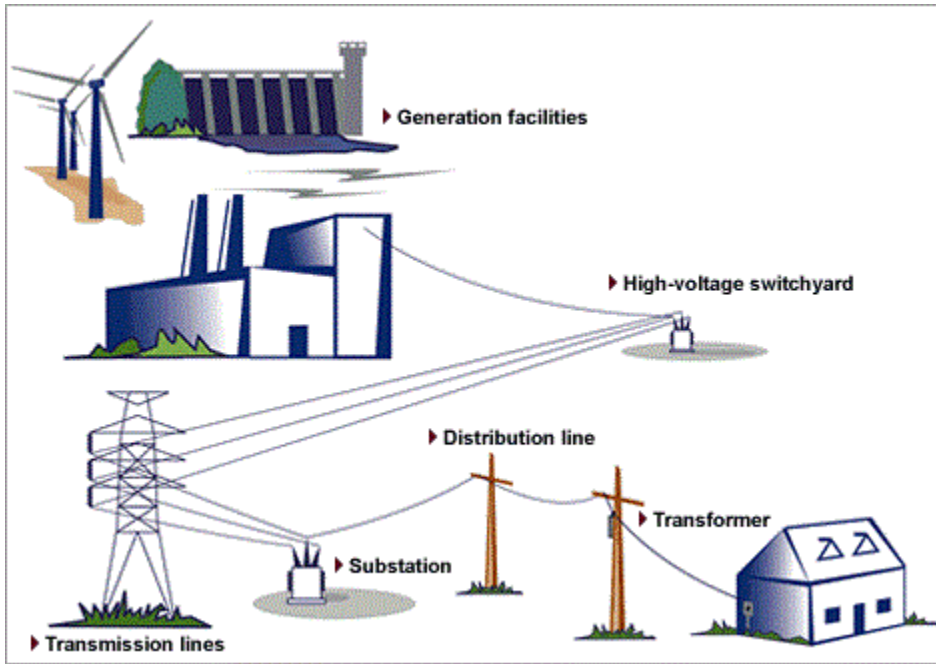


How does electricity get to your home?



Generation facilities

Most electricity is made by turbine blades rotating at speeds high enough to produce electricity in a generator. The blades can be turned by water, steam or wind.

High-voltage switchyard

The electricity flows through metal conduction to a switchyard, where a transformer steps up voltage for transmission.

Transmission lines

Transmission lines can efficiently carry high-voltage electricity over long distance to substations.

Substations

At substations, electricity is stepped down so it can travel over smaller distribution lines to homes and businesses.

Distribution lines

Distribution lines carry electricity to neighborhoods.

Transformer

An electric-pole transformer reduces the voltage to a level that can be used in homes.