



TELECOM

Telecom Update

Planning and Public Policy
Committee Meeting

June 17, 2026





TELECOM

MISSION-CRITICAL DATA TRANSPORT



**FOR TEXAS.
BY TEXANS.**

AGENDA

- **LCRA Telecom Overview**
 1. Wireless networks
(radios, data devices)
 2. Fiber optic broadband
- **Texas Broadband Development Office Grant Update**

LCRA Telecom’s network is purpose-built for LCRA operations. Remaining capacity is then shared with local governments and partner utilities.

1. Wireless Networks

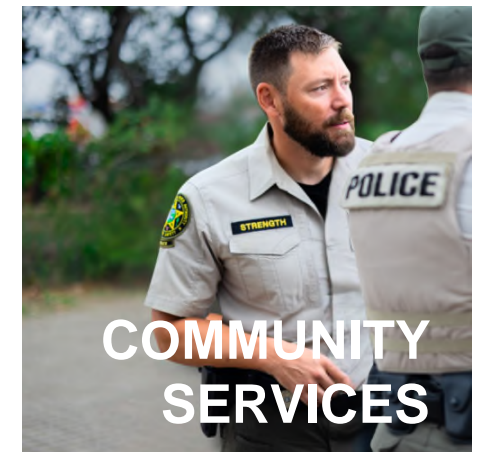
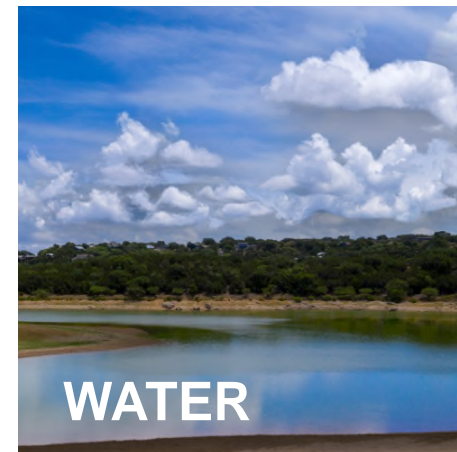
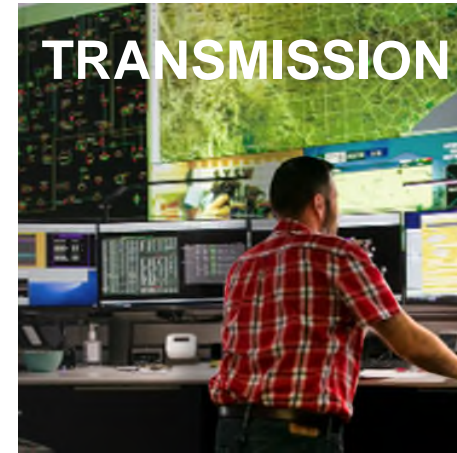
Microwave, narrowband and broadband radio systems (700 megahertz/ 900 MHz)

Core processing, tower sites, transport electronics, user devices and spectrum licenses

2. Fiber Optic Broadband

Expansive wired network connects generators, substations, tower sites and facilities

Large bandwidth for high-data functions, including monitoring, control and security

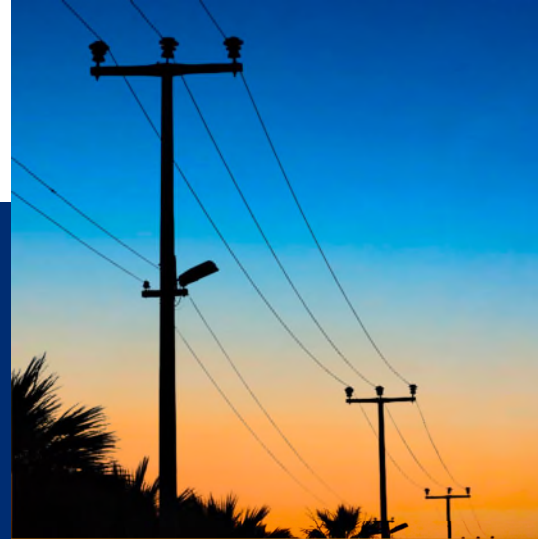


MISSION-CRITICAL COMMUNICATIONS



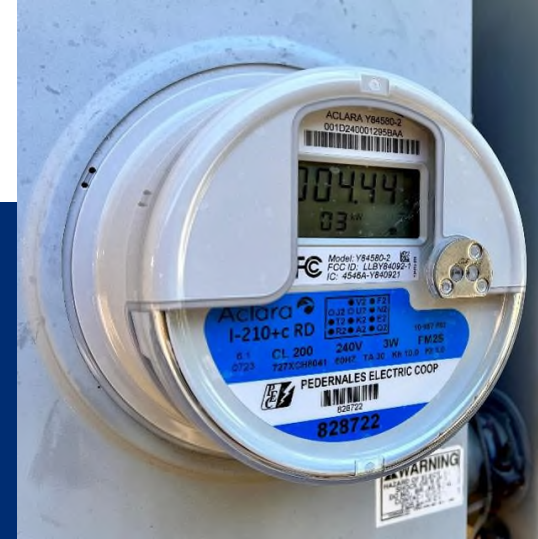
MISSION-CRITICAL PUSH-TO-TALK

MCPTT over LTE
with P25 interoperability



GRID AUTOMATION & MODERNIZATION

SCADA, distribution
automation, sensors, grid
protection



SMART METERS, SMART CITIES & IOT

Meter backhaul,
behind-the-glass LTE,
sensors, smart cities



MOBILE DATA

Fleet management,
mobile workforce

LCRA Telecom Supports Public Safety

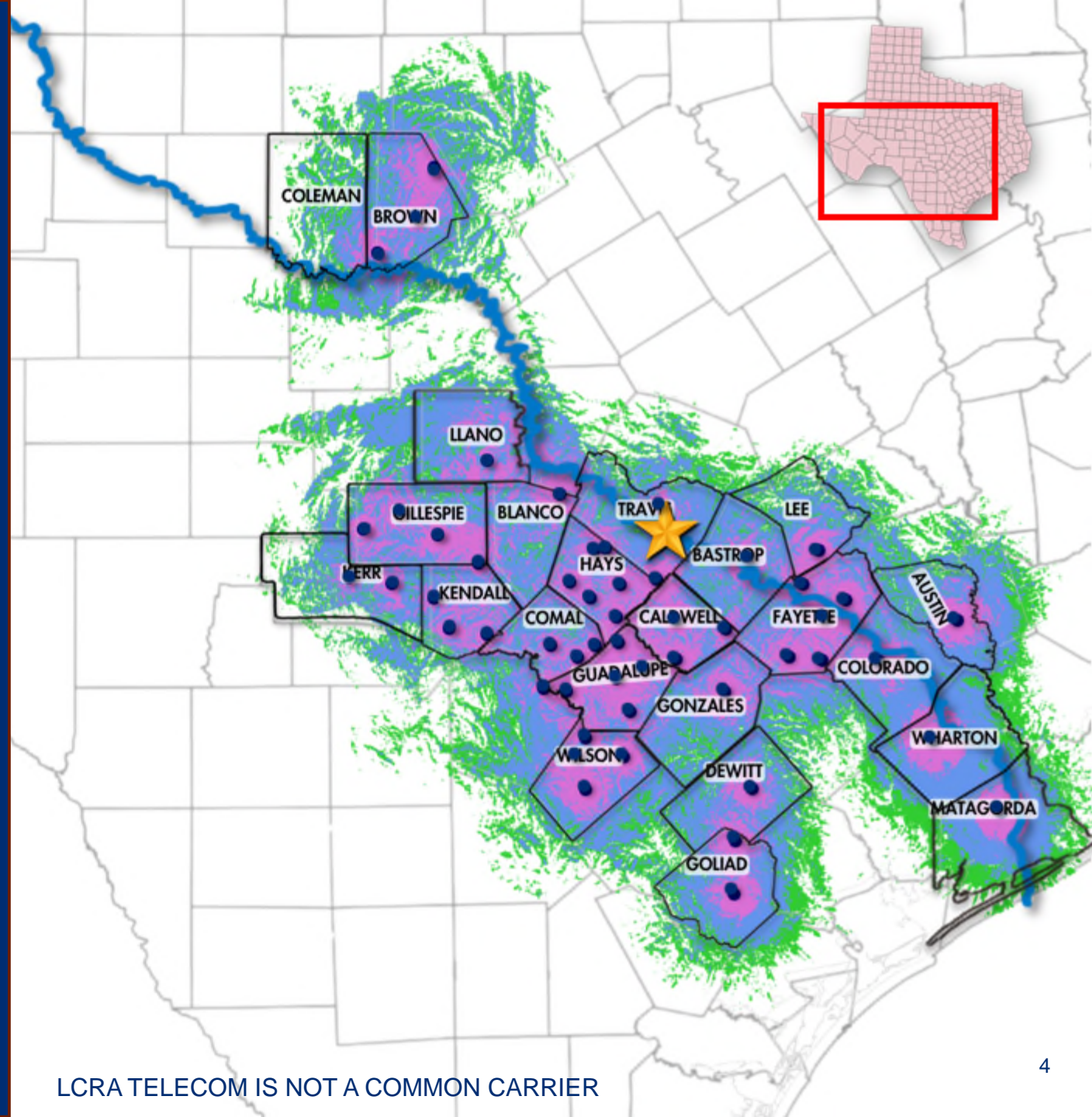
700 MHz – P25 Coverage Area

March 2026

For Law Enforcement, Fire Protection,
and Emergency Services

-  Indoor
-  Mobile & Portable
-  Mobile Only
-  On Air

*Coverage prediction only. Actual coverage may differ.
Predicted coverage depicted is for DAQ 3.4, with 95% reliability.*



LCRA Telecom Operations Network

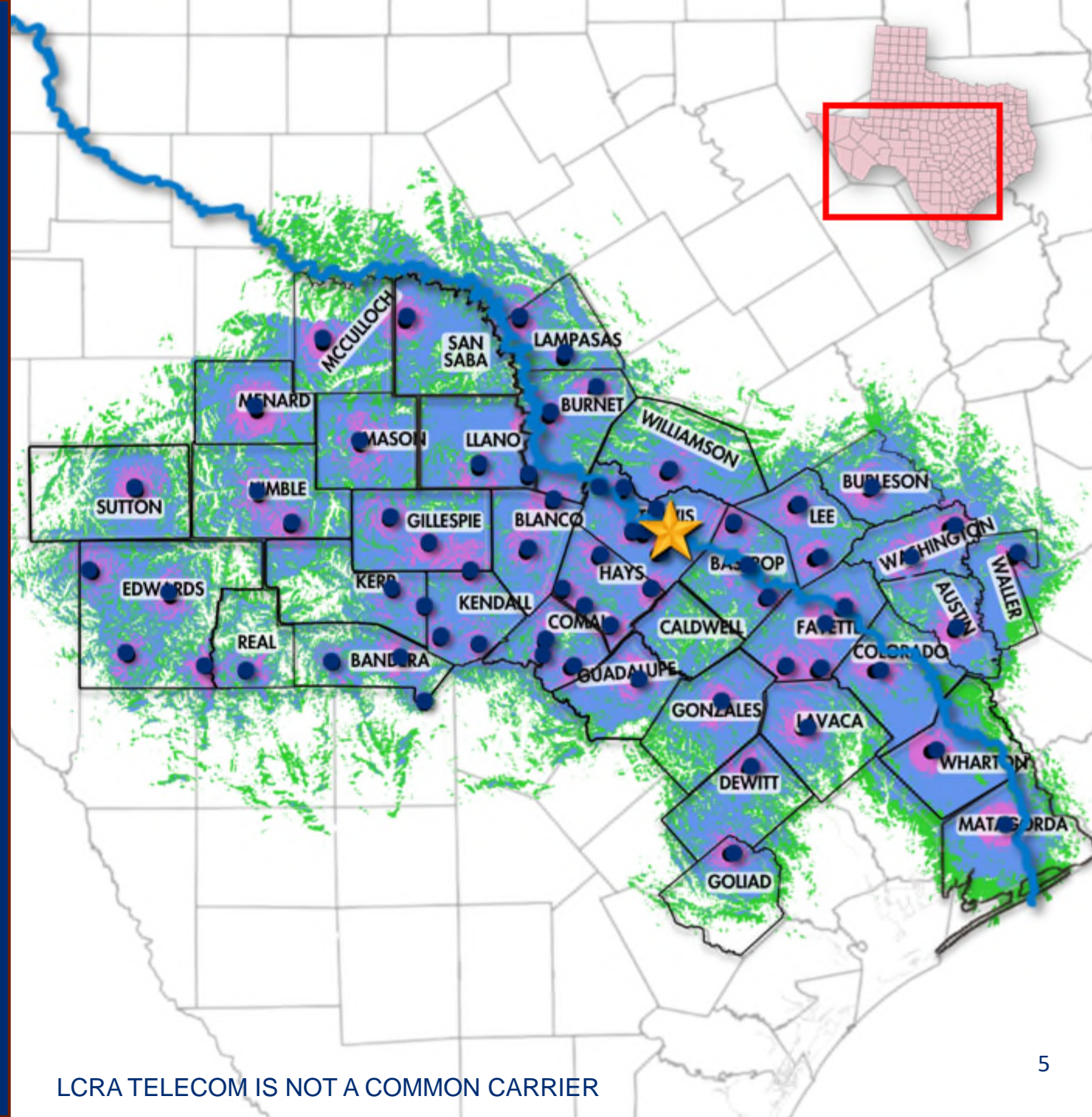
900 MHz – Emergency Communication
Push-to-Talk Network

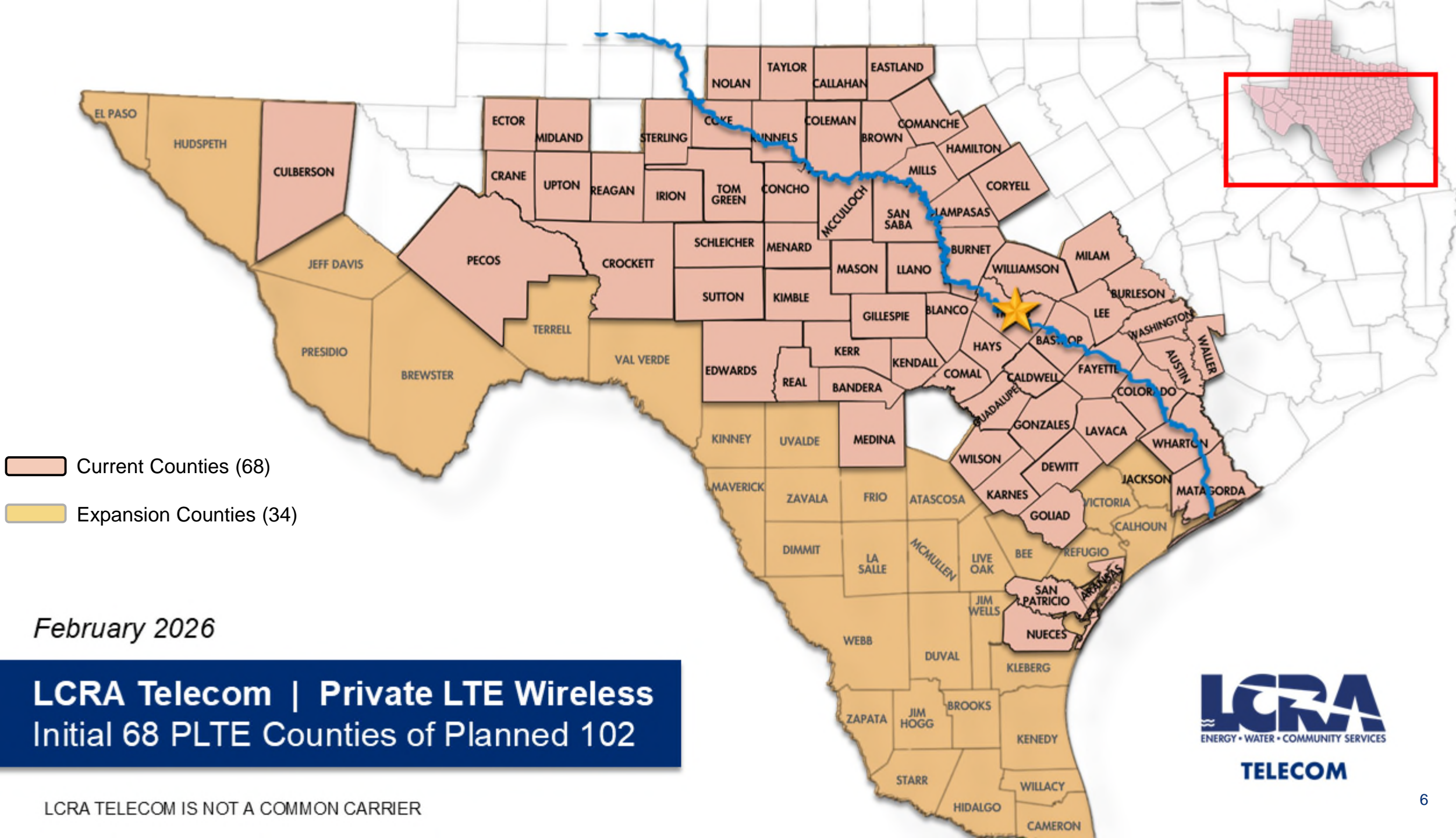
March 2026

For Utilities, Education, Public Transit,
and Flood Monitoring

-  Indoor
-  Mobile & Portable
-  Mobile Only
-  On Air

*Coverage prediction only. Actual coverage may differ.
Predicted coverage depicted is for DAQ 3.4, with 95% reliability.*





LCRA TELECOM IS NOT A COMMON CARRIER



TELECOM

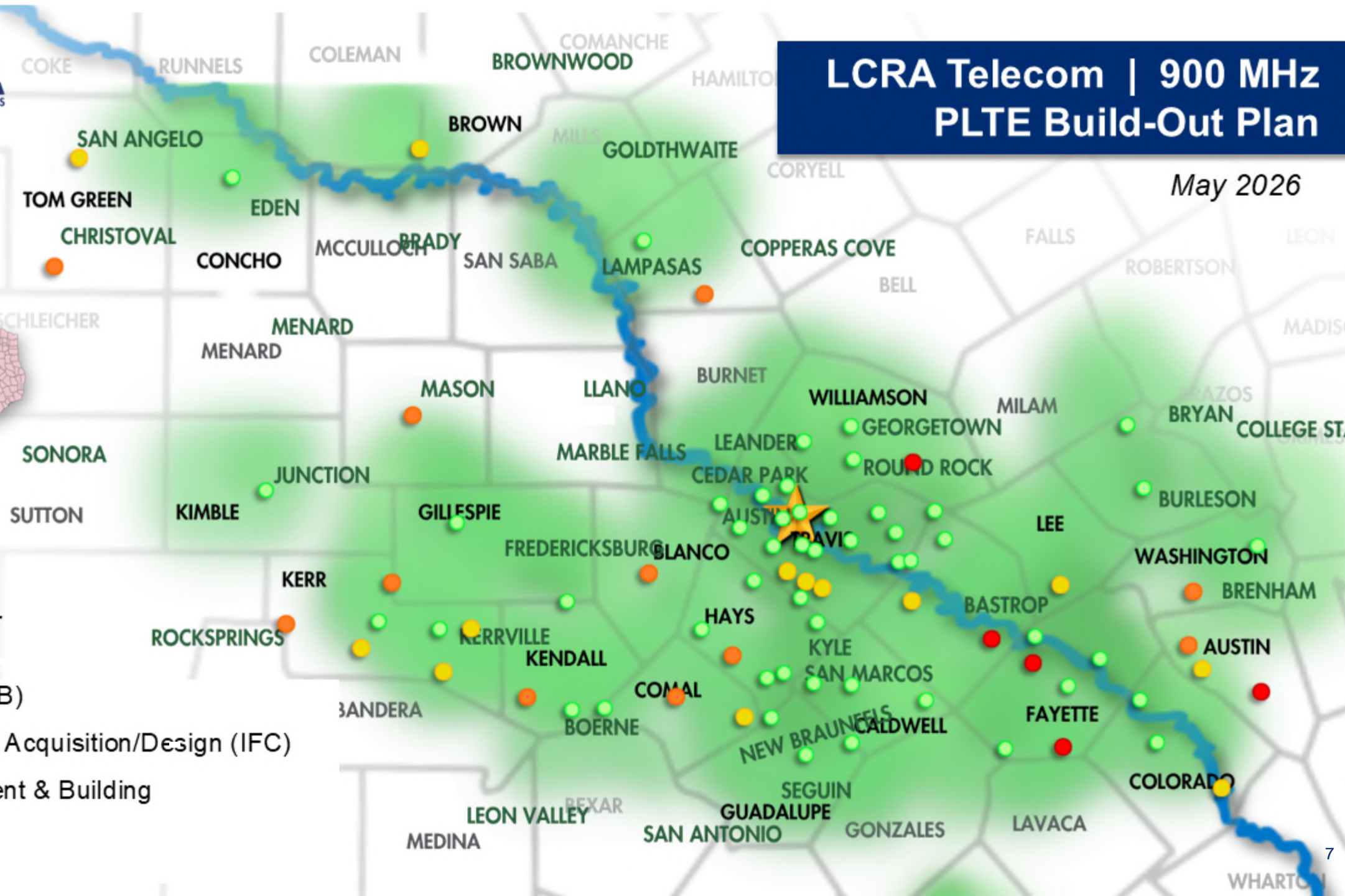
LCRA Telecom | 900 MHz PLTE Build-Out Plan

May 2026



56 Sites Built
52 Sites On Air

- Design (IFB)
- Lease/Site Acquisition/Design (IFC)
- Procurement & Building
- Complete



HOW CRITICAL INFRASTRUCTURE USES LCRA TELECOM'S PRIVATE WIRELESS NETWORK

for mission-critical communications



TELECOM



Power Utility

Water Utility

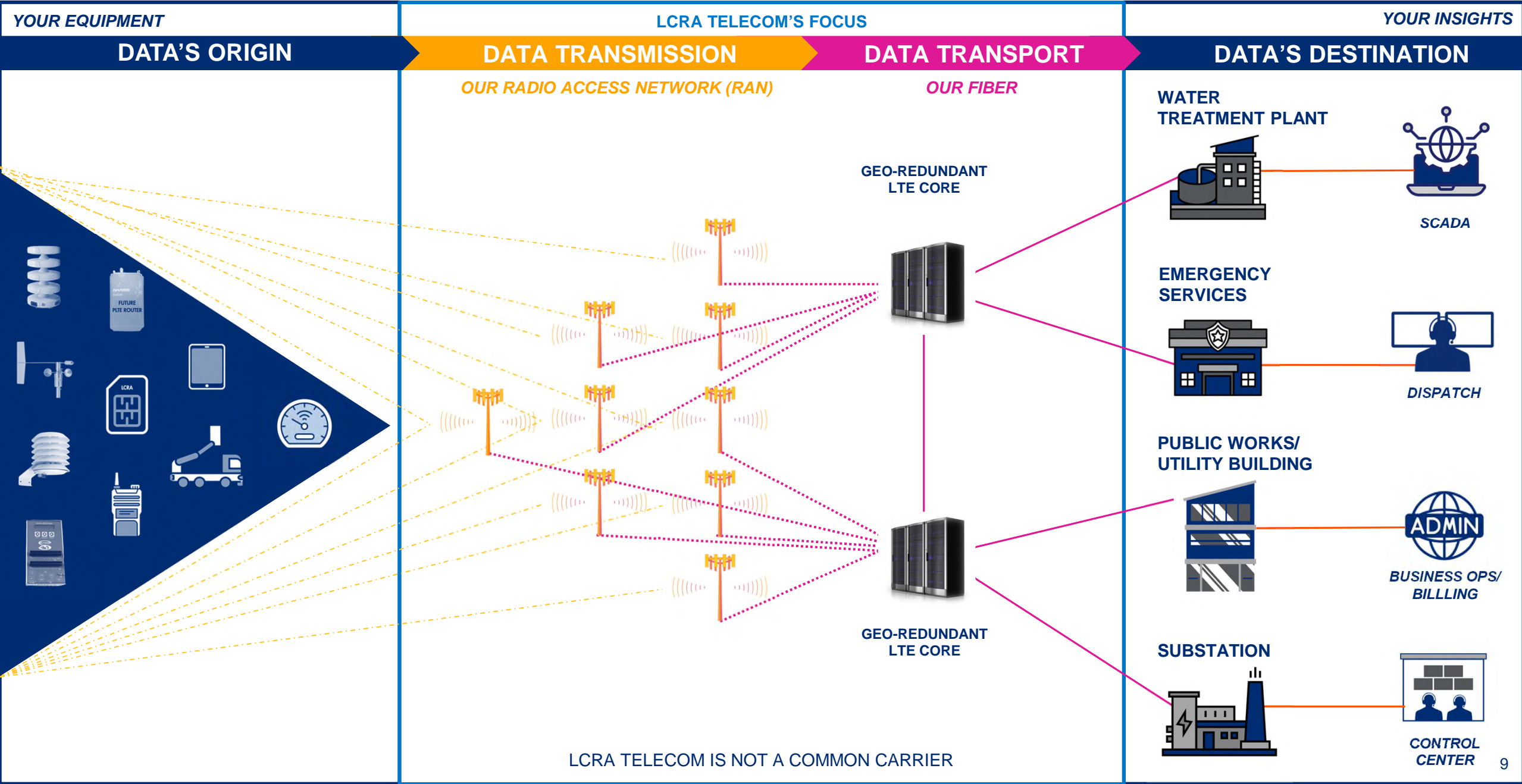
Public Works

Public Safety and Emergency Mgmt.

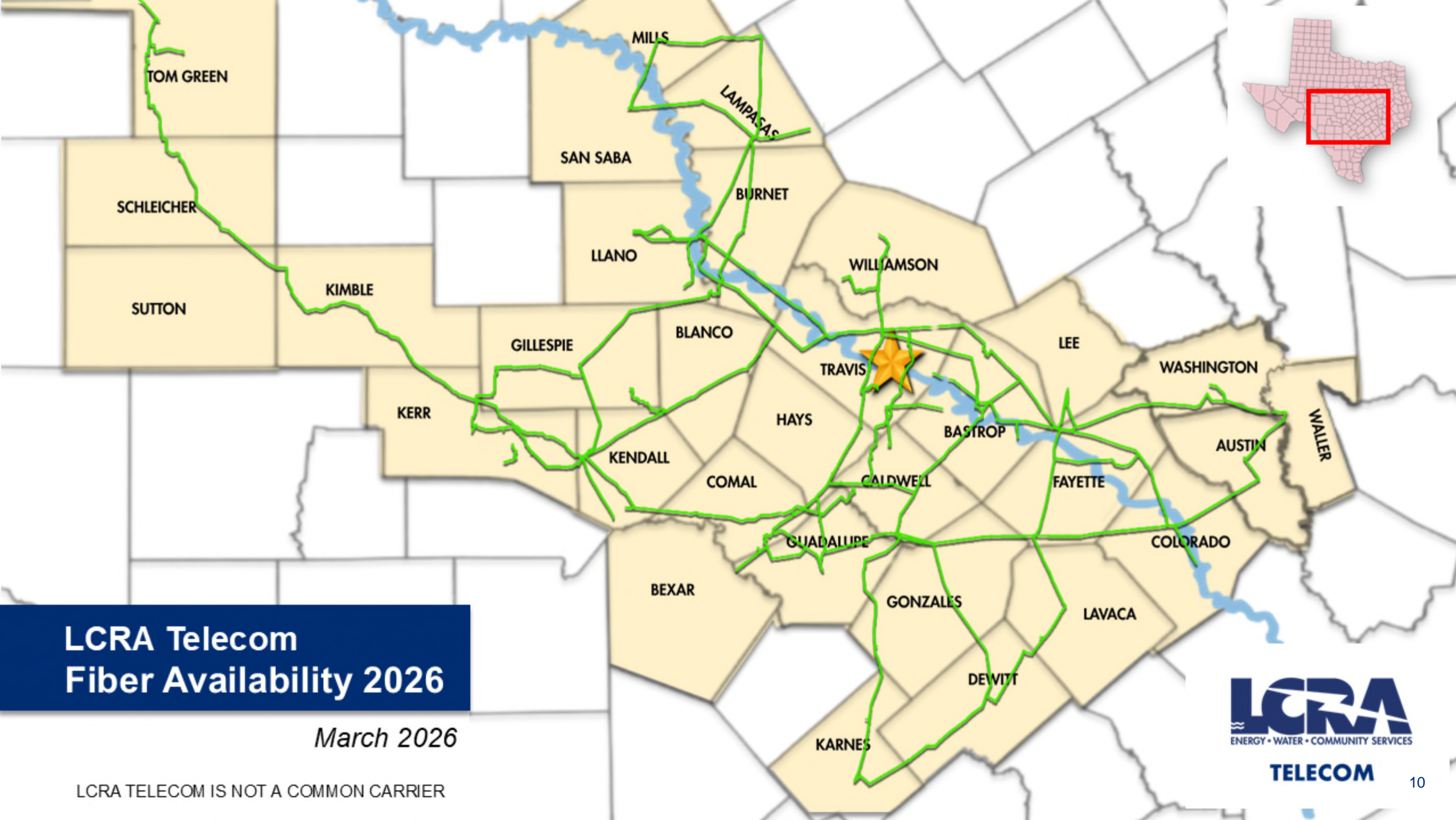
Education

<p>SCADA</p> <p>Control centers</p> <p>Distributed energy resources</p> <p>Grid protection</p> <p>Demand and response</p> <p>Sensors, IoT and metering</p> <p>EV charging and load management</p> <p>Maintenance and operations</p> <p>Distribution automation: capacitor banks, pole tilt, line monitoring</p>	<p>SCADA</p> <p>Sensors, IoT and metering</p> <p>Lift station monitoring</p> <p>Advanced pump optimization</p> <p>Advanced process control</p> <p>High-frequency flow measurement</p> <p>Fixed network pressure sensors</p> <p>Water quality</p>	<p>Smart cities</p> <p>Mission-critical monitoring</p> <p>Control centers</p> <p>Business operations and billing</p> <p>Revenue centers</p> <p>Road monitoring</p> <p>Traffic control</p> <p>Mission-critical push-to-talk voice communications for field, operations and maintenance + park rangers</p>	<p>Secure, encrypted mission-critical push-to-talk voice communications</p> <p>P25 mobile/rugged equipment</p> <p>Facilitates, expands P25 interoperability</p> <p>Flood early warning systems</p> <p>Dispatch and control centers</p> <p>Gunshot detection</p>	<p>Secure, encrypted mission-critical push-to-talk voice communications</p> <p>Maintenance and operations</p> <p>Campus coverage</p> <p>Regional coverage for transportation</p> <p>Monitoring, protection</p> <p>P25 mobile/rugged equipment</p> <p>Facilitates, expands P25 interoperability</p>
---	--	--	---	--

LCRA TELECOM'S PRIVATE WIRELESS NETWORK



LCRA TELECOM IS NOT A COMMON CARRIER



LCRA Telecom Fiber Availability 2026

March 2026

LCRA TELECOM IS NOT A COMMON CARRIER



TELECOM



BY THE NUMBERS

LCRA Telecom keeps our customers connected using the same communications backbone and infrastructure we use to run LCRA

128K

Square miles covered

2,800

Miles of fiber network

200+

LCRA Telecom customers*

7M+

Population served

102

Texas counties covered by broadband spectrum

40K+

Mission-critical radios

4x

Number of radios in our network since 2015

**First responders, utilities, cities, counties, educational institutions, transit authorities and internet service providers*

UPDATE

BDO Rural Broadband Grant

Expanding Middle Mile Infrastructure

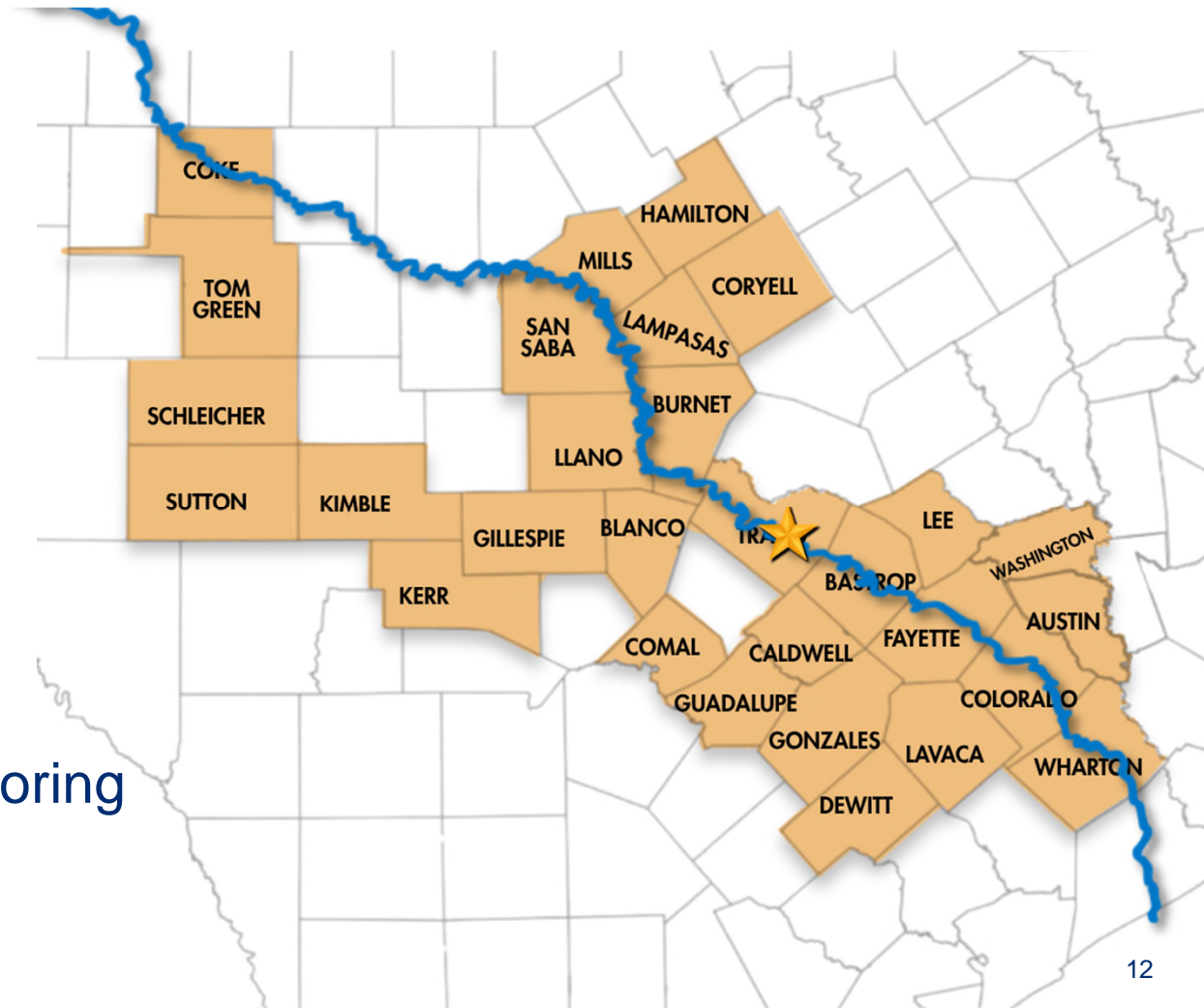


\$28.6M

Interlocal grant agreement

3 Interconnected infrastructure improvements:

1. Network access infrastructure for internet service providers
2. Tower sites and connectivity for flood monitoring
3. Fiber extensions to help close rural gaps





KERR COUNTY

Under the BDO's Middle Mile grant, **Kerrville Public Utility Board** received funding to establish modern flood early warning systems in the upper Guadalupe River basin

\$14.7M

Granted by BDO to KPUB

10 New private LTE sites

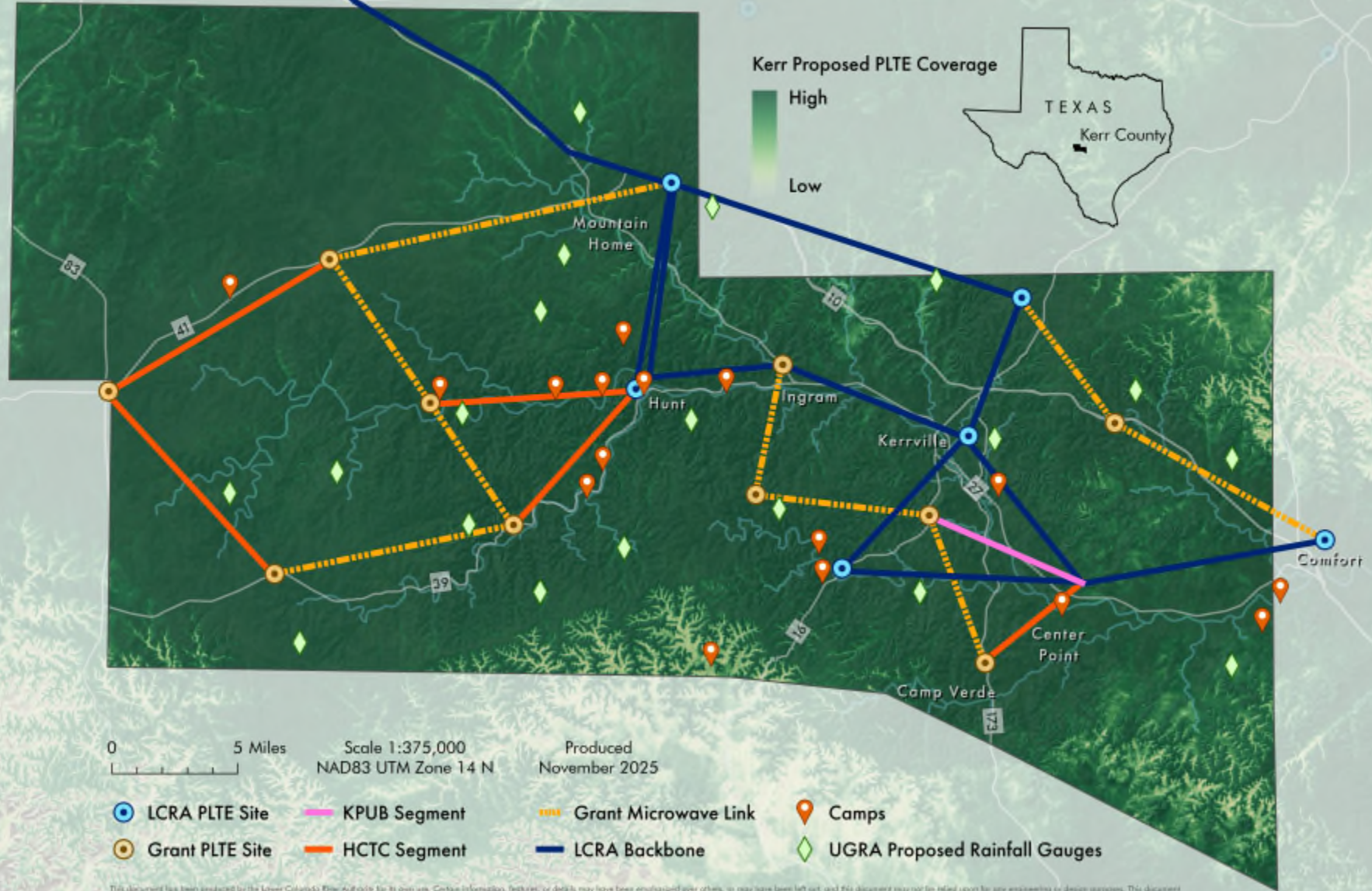
\$13.3M

Subgrantee LCRA Telecom's scope

6 Long-term, exclusive use agreement for fiber segments from Hill Country Telephone Cooperative

MAP 8: Full Proposed Overview

KERR COUNTY, TX



0 5 Miles

Scale 1:375,000
NAD83 UTM Zone 14 N

Produced
November 2025

- LCRA PLTE Site
- KPUB Segment
- Grant Microwave Link
- Camps
- Grant PLTE Site
- HCTC Segment
- LCRA Backbone
- UGRA Proposed Rainfall Gauges

This document has been produced by the Lower Colorado River Authority for its own use. Certain information, features, or details may have been emphasized over others, or may have been left out, and this document may not be relied upon for any engineering or design purposes. This document should not be considered survey grade, and the information contained in it may be revised without warning. The proposed boundaries displayed herein represent the approximate location of said feature's true geographic location on the earth's surface. LCRA does not warrant the accuracy or completeness of this document, and LCRA expressly disclaims any warranties, express or implied. If this document is reproduced, the reproducer must assure that the disclaimer appears on the document. If the reproducer fails to attach a copy of this disclaimer to the document, the reproducer hereby agrees to indemnify, defend, and hold harmless the LCRA and its directors, officers, and employees from and against any and all losses, damages, suits, or judgments, directly or indirectly, arising out of reproducer's dissemination of the document to others.



TELECOM

MISSION-CRITICAL DATA TRANSPORT



**FOR TEXAS.
BY TEXANS.**

Key Takeaways:

- Broadband wireless and fiber services
- Built for LCRA business units
- Support BDO to increase fiber access in rural communities
- Support counties installing early warning systems



LCRA
ENERGY • WATER • COMMUNITY SERVICES

TELECOM