

TRANSMISSION RIGHTS OF WAY AND YOUR PROPERTY

Respecting your private property while keeping the lights on and the community safe

LCRA Transmission Services Corporation (LCRA TSC) has thousands of miles of electric transmission lines that move power throughout Texas. Maintaining the transmission line right of way is critical to public safety and the reliability of the state's power grid.

About easements

LCRA TSC has easements that allow us to build, operate and maintain the transmission lines and structures on private property. The landowner retains ownership of the property, subject to LCRA TSC's rights. The landowner's use within the easement is limited to uses that do not limit our access to the lines, compromise the safety and reliability of the lines, or otherwise interfere with LCRA TSC's rights.

Right-of-way maintenance

LCRA conducts regular inspections and safety patrols along the right of way, and schedules maintenance and repairs to ensure public safety and reliability of the transmission system.

Vegetation maintenance is a significant component of our care of the transmission line right of way. Proper vegetation maintenance practices help prevent injury and fire by eliminating potential electrical contact and arcing between the power line and vegetation.

We follow applicable standards for vegetation maintenance, but we don't have a one-size-fits-all approach. Where appropriate, we will maintain a fully cleared right of way if it is the most efficient, effective and safest option. We allow low-growing, native species where appropriate to help manage the spread of undesirable species. We selectively trim trees and other vegetation as needed and only use herbicides reviewed and approved by LCRA's Environmental Affairs team. When uncommon problems occur, LCRA works with landowners to implement solutions.

Removal of mature trees may be necessary if the trees cannot be pruned to allow safe and effective operation of the transmission line.

What is a right of way?

A transmission line right of way is the strip of land used to construct, operate, maintain and repair a transmission line and facilities. The right of way is the area of land addressed in an easement.

The width of a right of way can vary and generally is between 50 and 165 feet, but can be larger. The width depends on the voltage of the line, the distance between structures, and the specific rights granted in the easement. The transmission line usually is centered in the right of way, and generally, the area must remain clear of anything that could interfere with safe operations or access to the power line.





Using your land

Many land uses within the right of way generally don't interfere with the safe operation of the transmission line, including farming, grazing, gardening, hunting, biking and hiking, to name a few.

Other uses are restricted, however. It's important to call us before adding improvements or making changes to the grade within the right of way. If we discover obstructions in the right of way that pose safety, access or operational issues, we will require you to restore the right of way back to its original condition – at your own expense. Contacting us beforehand can save you time, money and frustration.

Dos and don'ts within the right of way

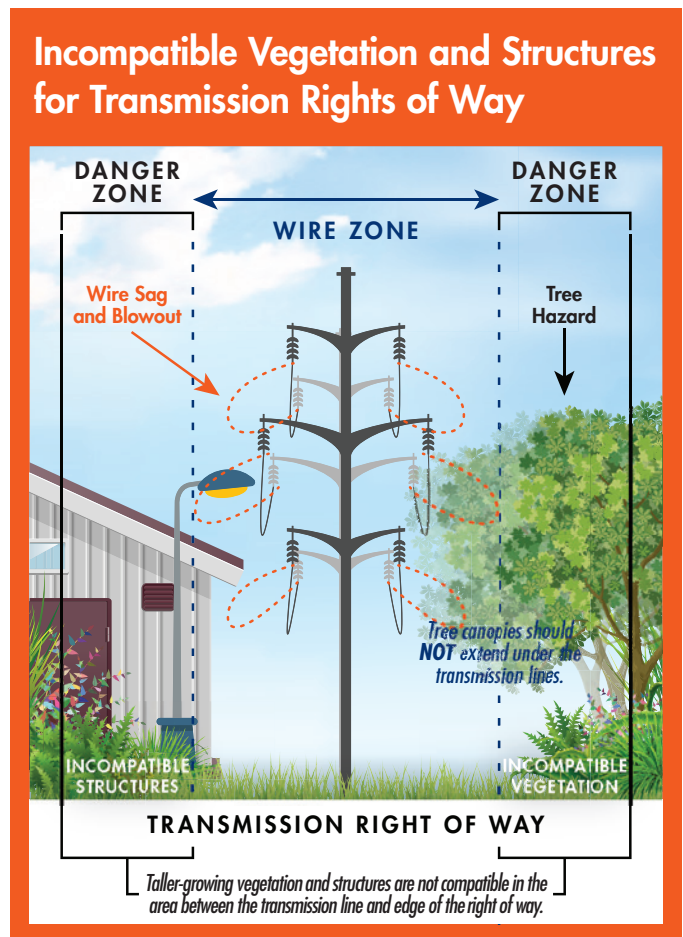
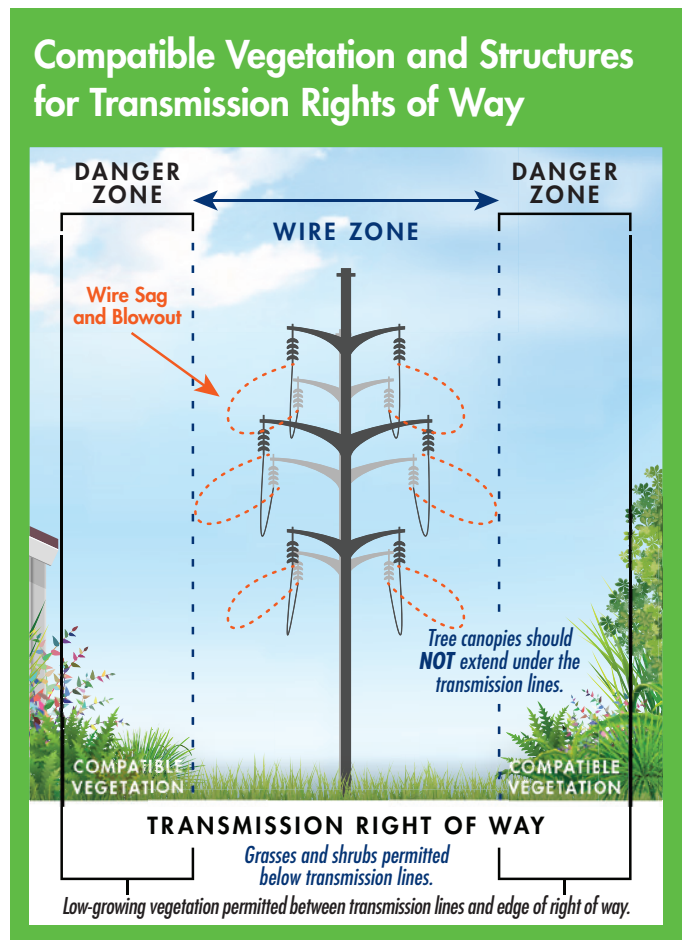
- **Always avoid the following within the right of way:**
 - Building permanent structures such as light poles, signs, buildings, swimming pools, etc.
 - Storing combustible materials, including wood and trash.
 - Constructing ponds, septic tanks and drainage fields.
 - Creating or storing piles of debris, rubble or dirt.
 - Abandoned vehicles.
- **Contact LCRA before starting any activity that will change or has potential to change the finished grade or slope within the right of way.**
- **Consider clearance distance.** The National Electrical Safety Code, American National Standard Institute and state law require minimum clearance distances between the power line and objects within the right of way. The minimum clearances vary depending on the voltage of the line and other conditions. Remember, the wires can sag significantly depending on the outdoor temperature and the amount of electric current in the line. On windy days, the wires will sway horizontally, sometimes near the edge of the right of way. Clearances must be maintained in all conditions.
- **Low-growing crops and grasses are welcome in the right of way as long as the plantings maintain safe clearances and do not hinder access to the transmission line.** Low-growing vegetation with a mature height of 10 feet or less can generally be planted in the outer edges of the right of way. We allow the use of native plants and grasses where

appropriate because they inhibit the quick growth of invasive species and improve biodiversity and native habitat. Please don't install irrigation systems within the right of way as they can be damaged by large equipment when accessing the transmission line.

- **Follow these guidelines for temporary structures:**
 - Temporary structures like fences and gates must be properly grounded and meet the electrical clearance requirements noted above.
 - Fences must not obstruct access or prevent movement up and down the right of way.
 - Gate locks should include either an LCRA standard lock or an electric gate override key.
 - Dumpsters should not be placed within the right of way.

What you can expect

- You may see us along the right of way, as we patrol it regularly looking for safety or access concerns and conducting light maintenance.
- We will provide advance written notice prior to entering your private property when the regularly scheduled maintenance activities include heavy equipment, vegetation clearing or major transmission line repairs. Advance notice may not be possible in the event of an emergency situation. In those situations, LCRA will reach out to you as soon as possible after safe conditions are restored.
- We will provide direct contact information so you can reach us with any questions or concerns when we send notifications.
- We will minimize disruptions as much as possible, while ensuring the transmission line is maintained in a way that ensures both public safety and electric reliability.
- The work will be handled by professionals. Our team includes certified arborists, licensed herbicide applicators and experienced electricians and line workers.
- If we encounter issues or discover problems, we'll seek collaborative solutions as much as possible. Our interactions with you and your property will always be conducted in a respectful manner.



Being a good neighbor

LCRA TSC strives to be a good neighbor as we manage thousands of miles of transmission lines that bring power to Texans. Public safety, including your safety and the safety of our employees, is our foremost priority.

Please contact us anytime you have a question or concern, or are considering making a change on your property that may include the right of way.