

TURF CONVERSION GUIDE

Help reduce the stress that outdoor watering puts on the region's water supplies – lakes Buchanan and Travis – by decreasing the amount of turf grass on your property



The recommended amount to water turf grass such as bermuda or zoysia during the summer months is 1 inch per week. That's 1,250 gallons per week for a 500 square foot area, or about 5,000 gallons over the summer. Decrease how much water you use outdoors by reducing the square footage of turf grass on your property.

LCRA offers a rebate for 50 cents per square foot, up to \$2,000, for converting at least 200 square feet of healthy turf grass to a native planting bed with natural wood mulch or drought-tolerant landscape. Learn more and apply at www.WaterSmart.org/rebates.

Design templates

These design templates offer simple plans for converting turf and feature plants that are readily available locally. The templates highlight common areas in your yard that can easily be transformed from turf grass to native landscaping. Each example features both sunny and shady spaces with recommended plants that will thrive in these conditions.

- 1 Back yard corner garden**
- 2 Side yard garden**
- 3 Front yard driveway garden**



Featured plants

The plants featured in this guide are categorized as low or very low water use. Low water plants typically require watering every three to four weeks in the absence of rainfall, while very low water plants only need occasional watering during prolonged dry conditions. All plants will require more frequent watering during the first two years of growth.

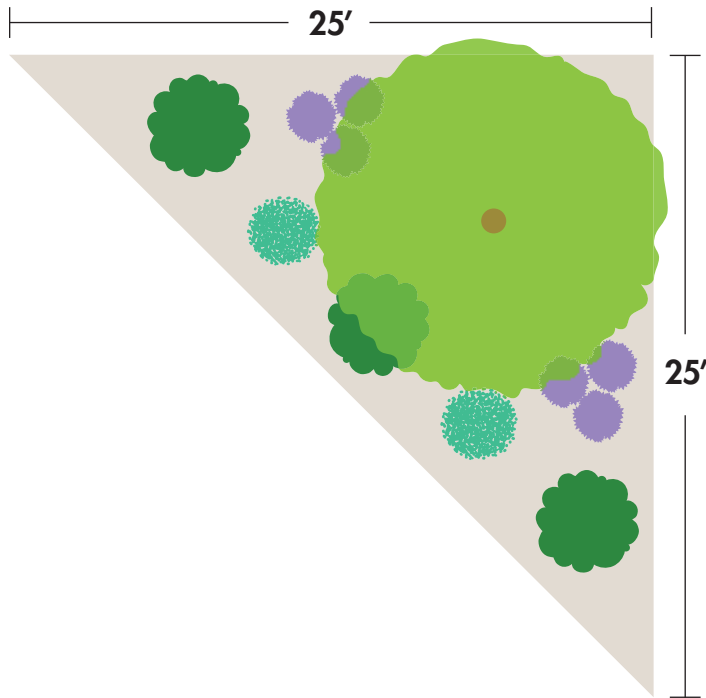
Watering plants by hand is recommended; however, if an irrigation system is necessary, drip irrigation or bubblers are ideal. To help retain moisture and reduce weed growth, add mulch to all garden beds.



1 BACK YARD CORNER GARDEN

Plant sizes shown in the template reflect the plant's mature size.

Layout for Sun



Texas Persimmon
15'

Small tree, very low



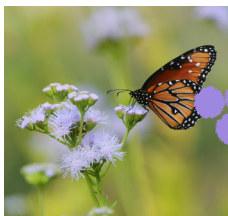
Rock Rose
3-4'

Large perennial, very low



Mealy Blue Sage
2-3'

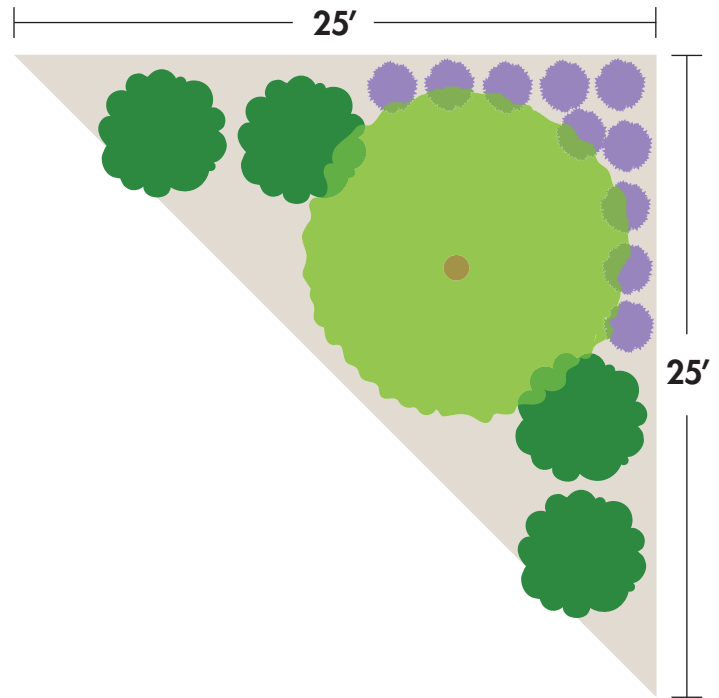
Small perennial, low



Gregg's Mistflower
1-2'

Small perennial, low

Layout for Shade



Texas Redbud
10-15'

Small tree, low/very low



Dwarf Yaupon Holly
4-5'

Shrub, low



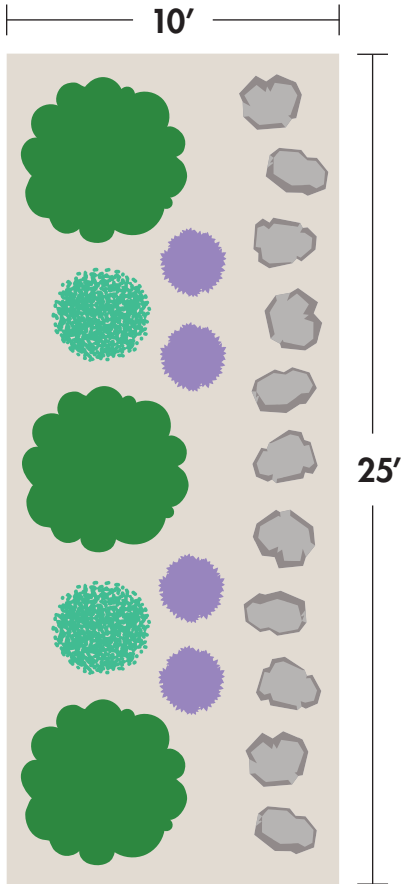
Cedar Sage
1-2'

Groundcover, low/very low

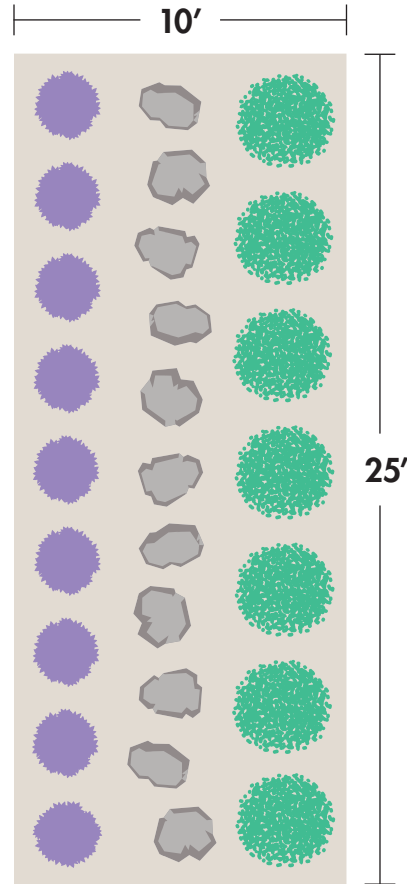
2 SIDE YARD GARDEN

Plant sizes shown in the template reflect the plant's mature size.

Layout for Sun



Layout for Shade



Texas Sage

5'

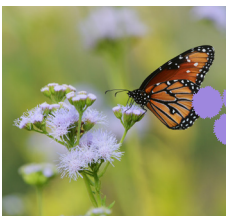
Small tree, low/very low



Zexmenia

2-3'

Small perennial, low



Gregg's Mistflower

1-2'

Small perennial, low



Turks Cap

2-3'

Small perennial, low/very low



Heartleaf Skullcap

2'

Small perennial, low/very low



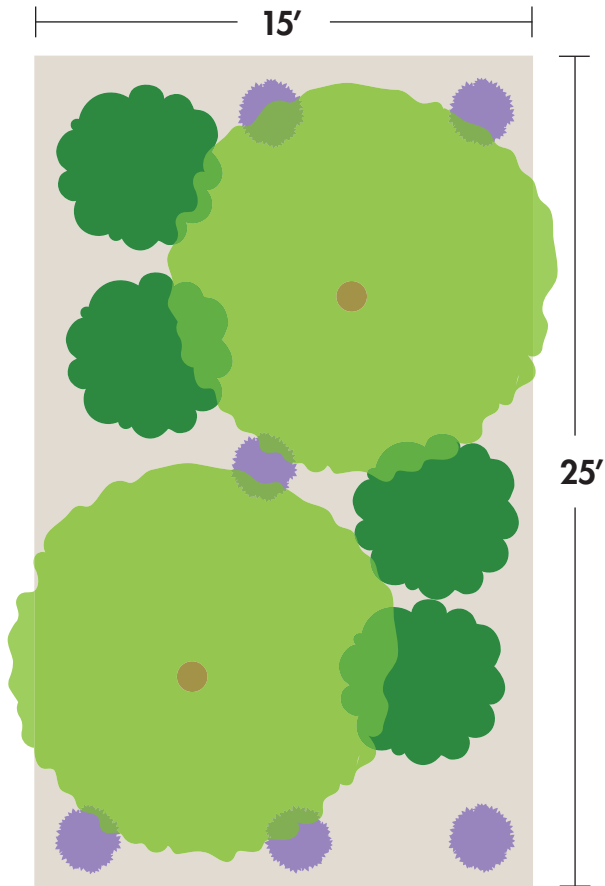
Stepping stone

1-2'

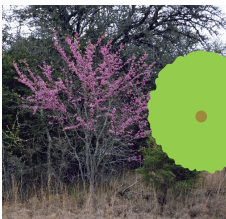
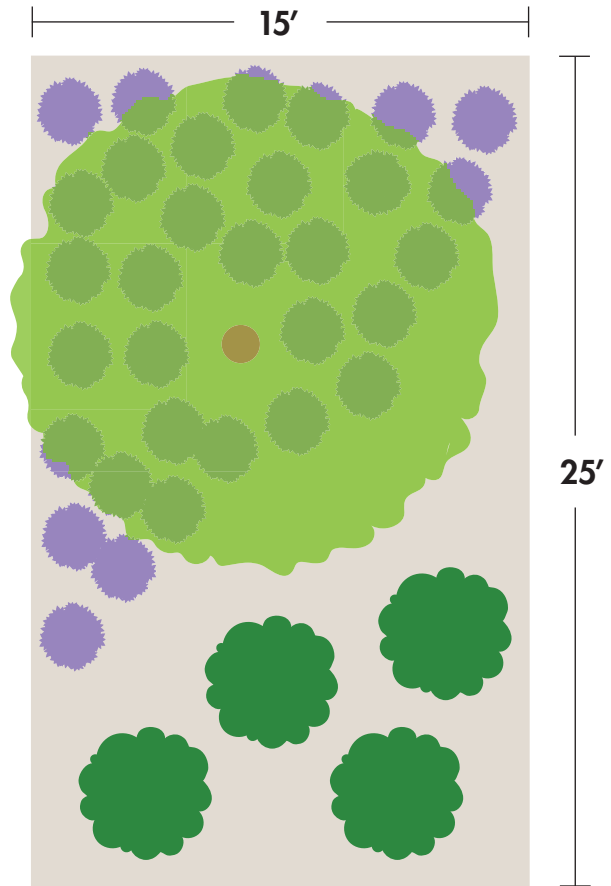
3 FRONT YARD DRIVEWAY GARDEN

Plant sizes shown in the template reflect the plant's mature size.

Layout for Sun



Layout for Shade



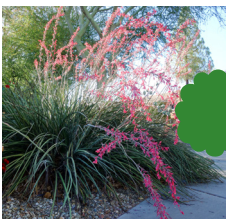
Texas Redbud
10-15'

Small tree, low/very low



Texas Persimmon
15'

Small tree, low/very low



Red Yucca
4-6'

Large perennial, low/very low



Texas Beargrass
2-4'

Large perennial, low/very low



Paleleaf Yucca
1-3'

Small perennial, low



Cedar Sage
1-2'

Groundcover, low/very low