

Water Supply Projects Update

Water Operations Committee Meeting
Sept. 24, 2025



Need for New Water Supply in the Lower Colorado River's Upper Reach (Highland Lakes to Wharton)

	Acre-feet per year					
	2030	2040	2050	2060	2070	2080
Projected future firm contractual commitments in upper reach	468,000	477,000	455,000	456,000	464,000	464,000
Uncertainty cushion	30,000	30,000	50,000	50,000	50,000	50,000
Total supply needed	498,000	507,000	505,000	506,000	514,000	514,000
Historic firm yield – upper reach ¹	450,000	450,000	450,000	450,000	450,000	450,000
New supply needed	48,000	57,000	55,000	56,000	64,000	64,000

¹Combined firm yield of lakes Travis and Buchanan plus 33,000 a-f per year of Garwood Agricultural Division water right. Does not include potential sedimentation.

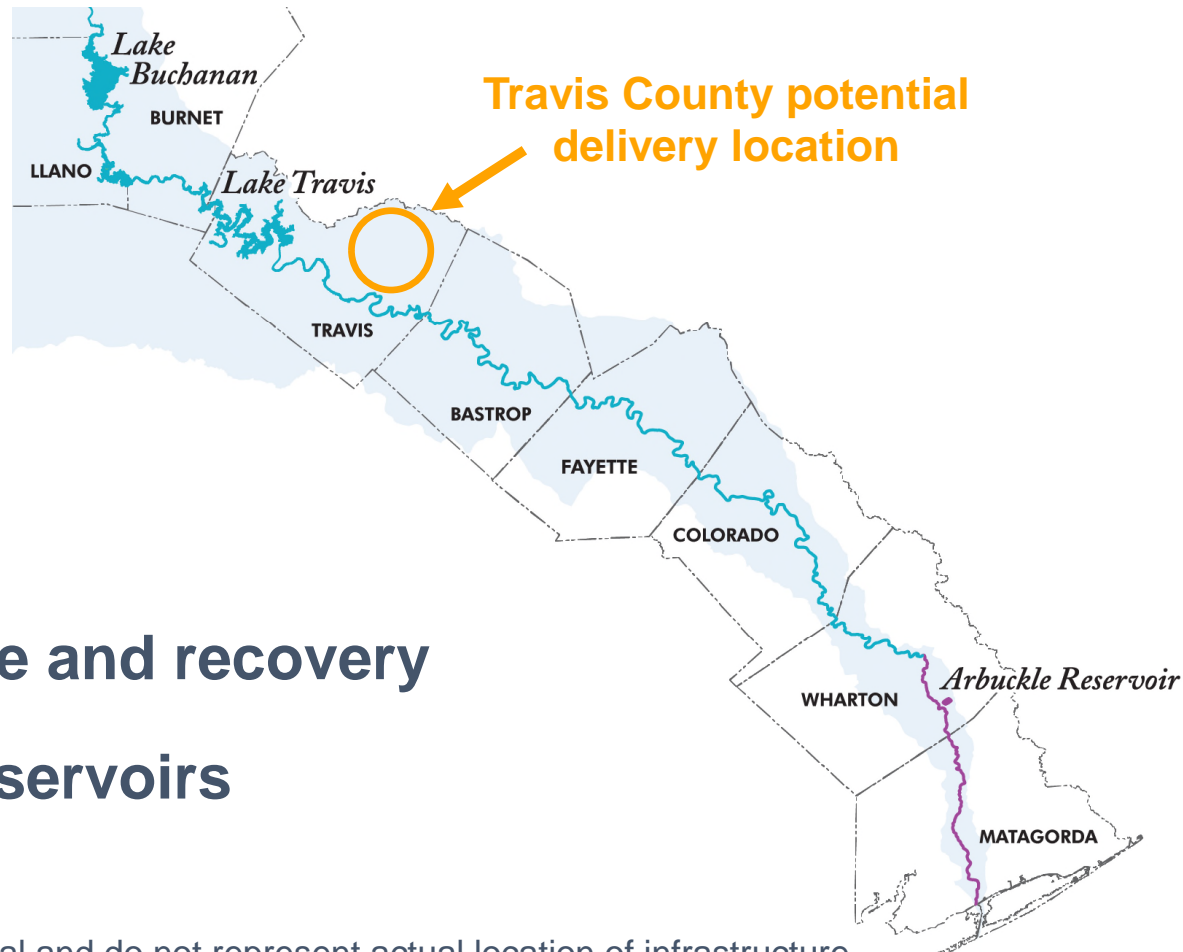
Targeted new firm water supply for upper reach of about 60,000 a-f per year by 2040

Water Supply Resource Report

- **Currently out for comment**
- **Includes:**
 - List of potential projects
 - Additional supply amount
 - Strategies and timelines for additional supply



New Supplies From Colorado River

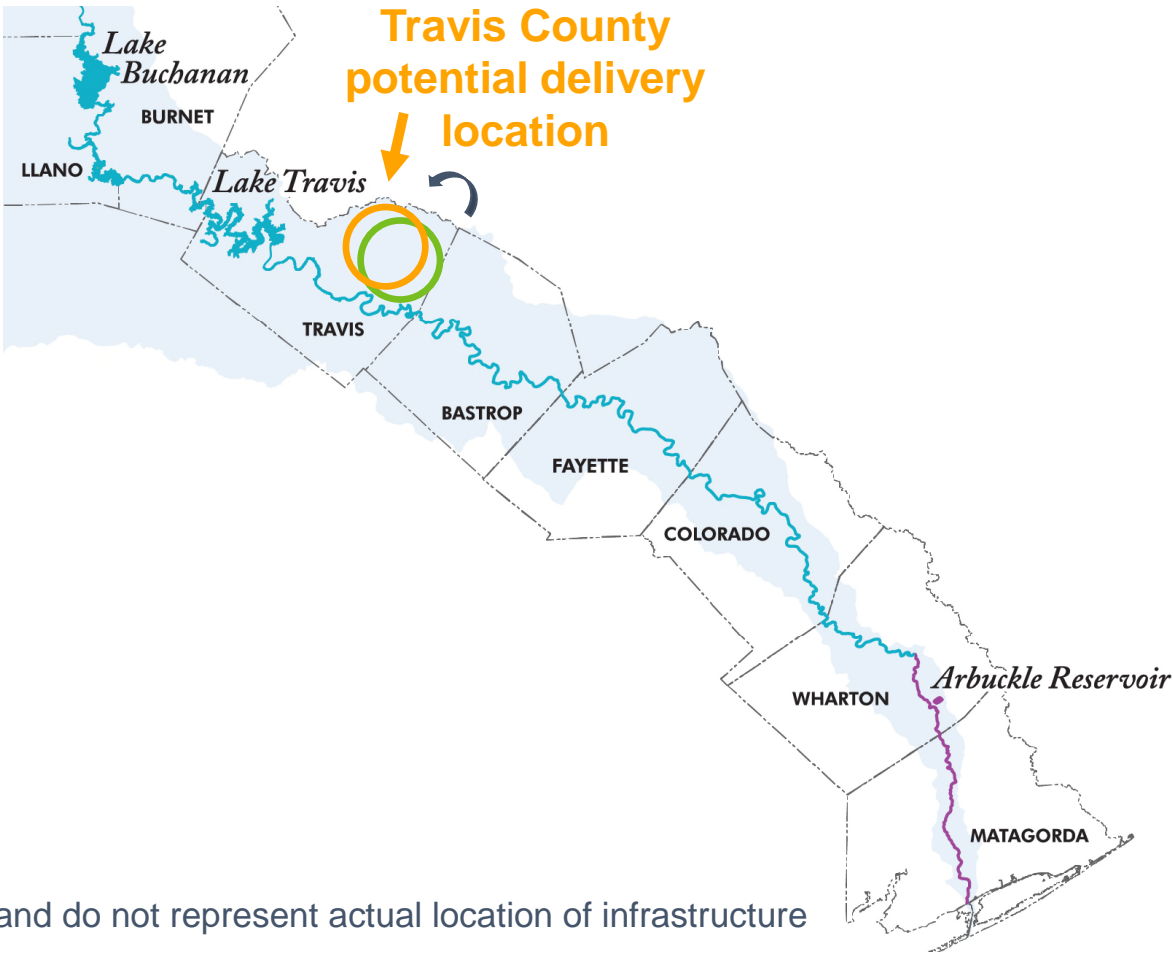


- **Aquifer storage and recovery**
- **Off-channel reservoirs**

Note: Illustrations are conceptual and do not represent actual location of infrastructure

New Supplies From Colorado River

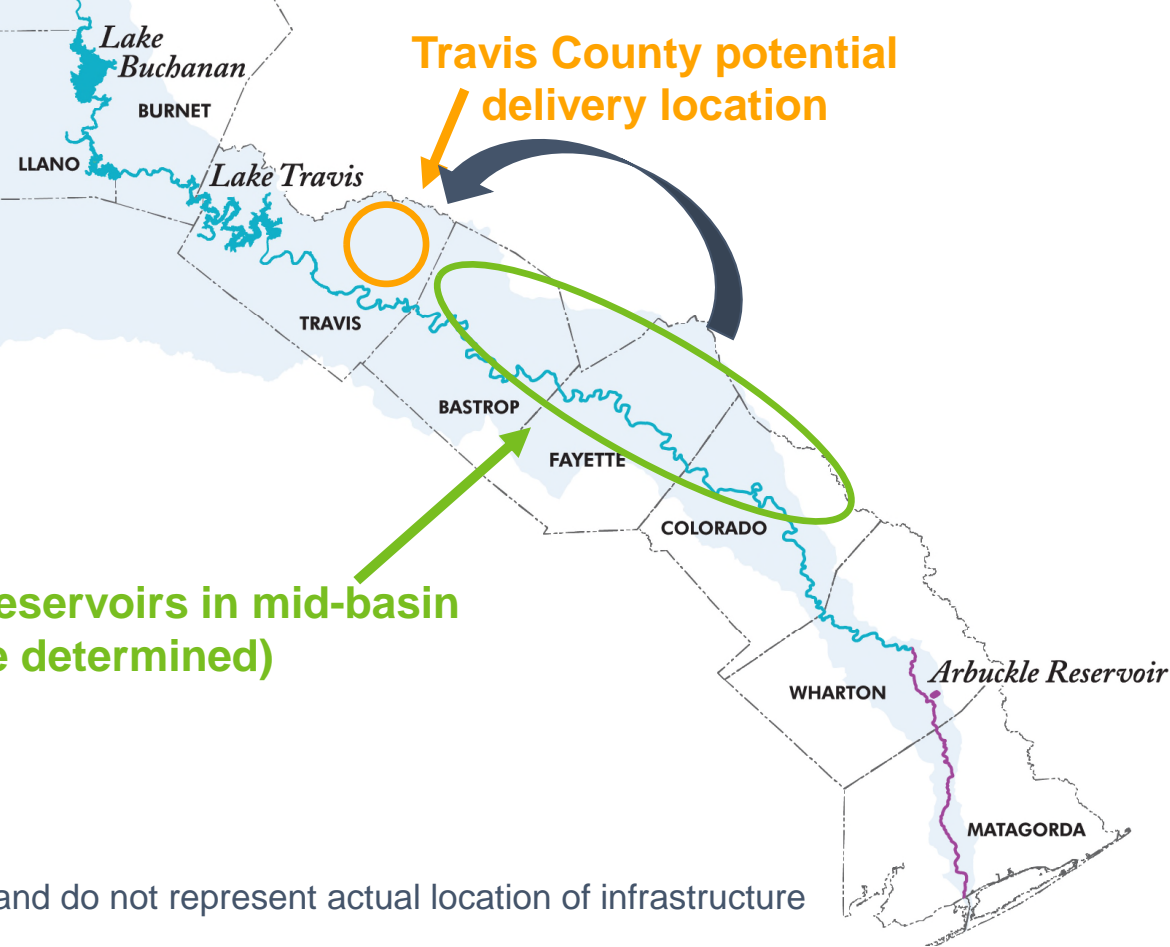
Aquifer Storage and Recovery



Note: Illustrations are conceptual and do not represent actual location of infrastructure

New Supplies From Colorado River

Off-Channel Storage and Conveyance Strategies

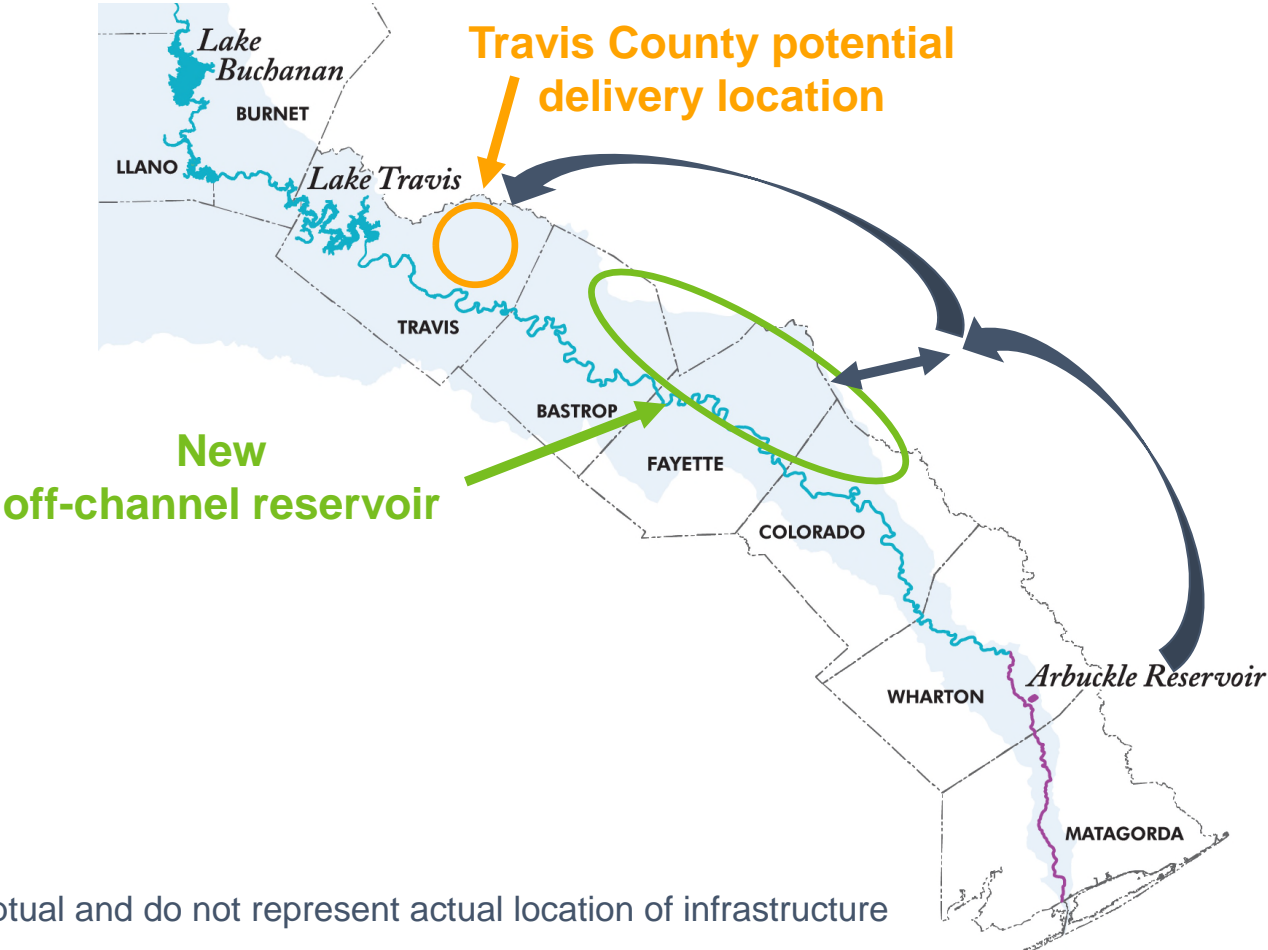


Three new off-channel reservoirs in mid-basin (locations to be determined)

Note: Illustrations are conceptual and do not represent actual location of infrastructure

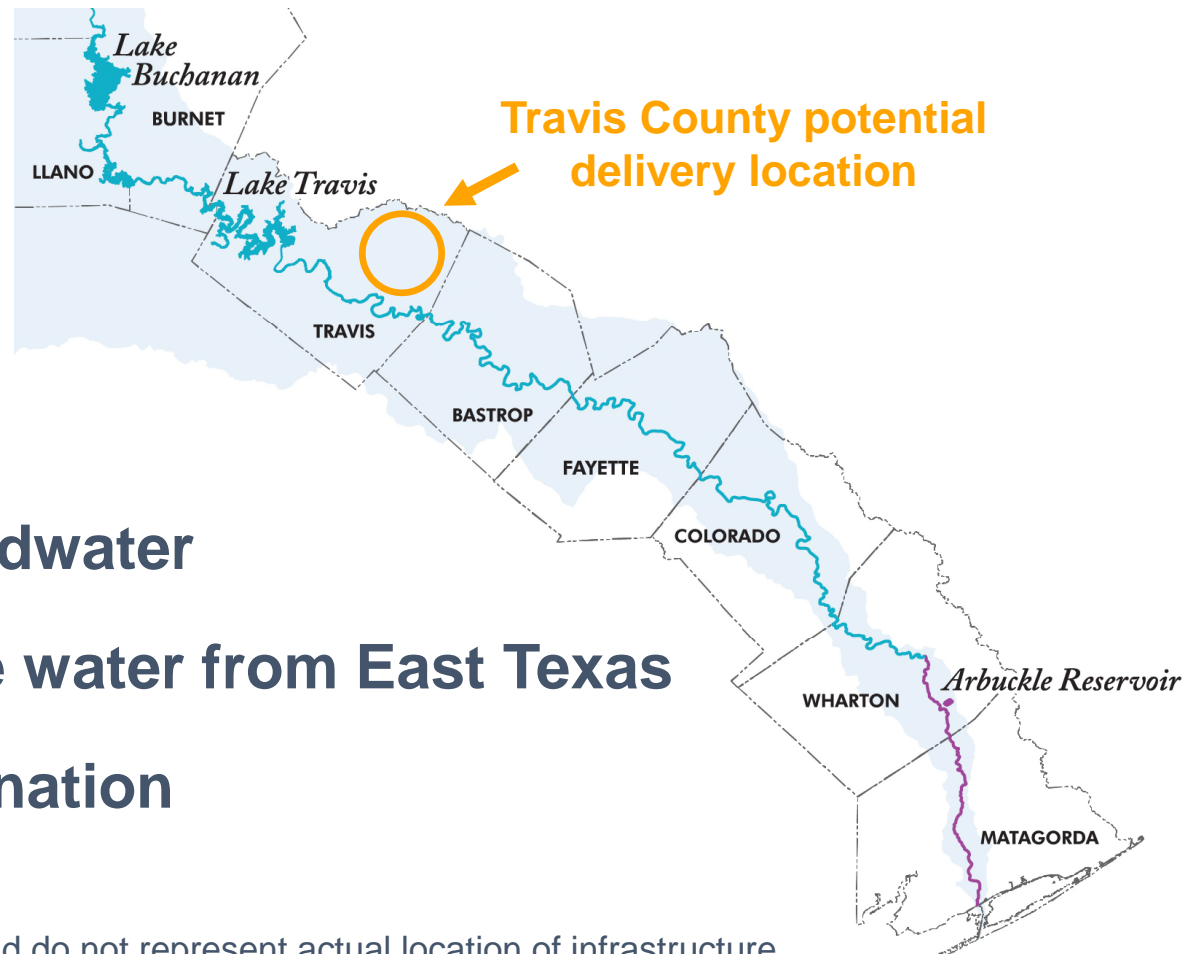
System Optimization

Arbuckle Pipeline and Off-Channel Reservoirs to Travis County



Note: Illustrations are conceptual and do not represent actual location of infrastructure

Other New Supplies



- Purchase groundwater
- Transfer surface water from East Texas
- Seawater desalination

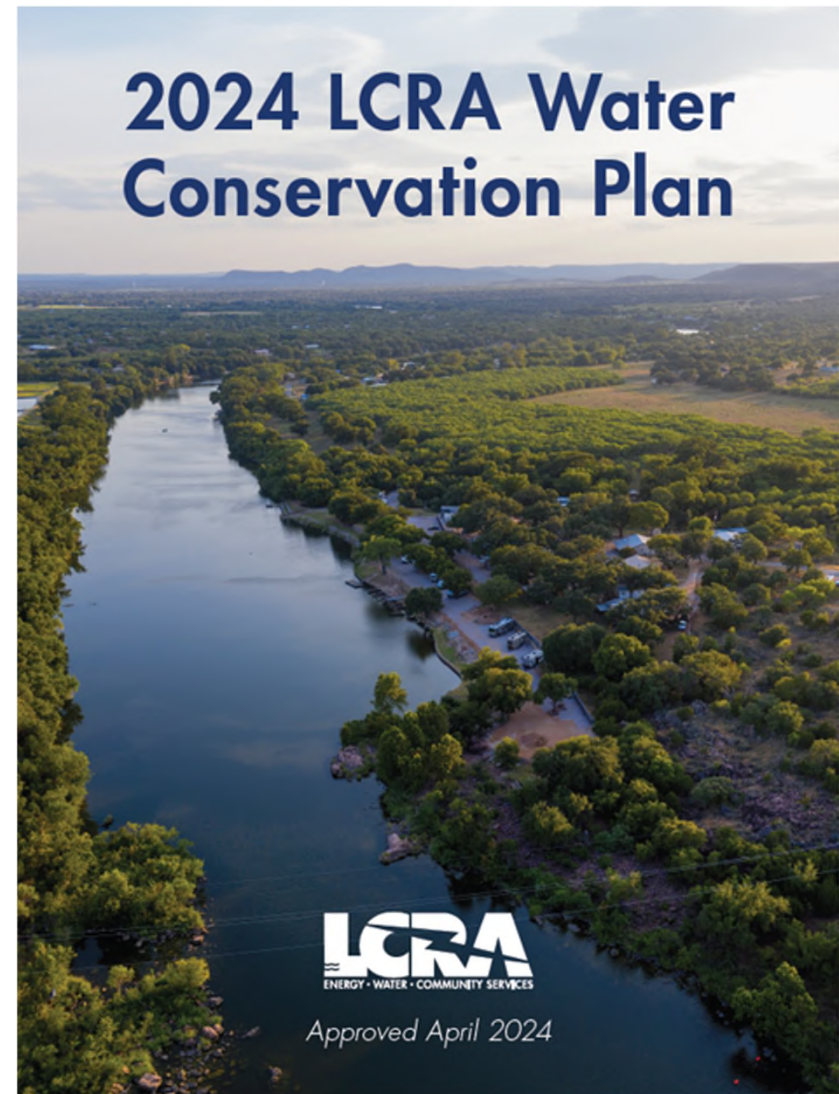
Note: Illustrations are conceptual and do not represent actual location of infrastructure

Water Conservation

As of 2024, water conservation totaled about 22,000 a-f per year

Total Cumulative Conserved Supply (a-f per year)

	Five-year goal (2029)	10-year goal (2031)
Municipal and industrial	12,000	15,000
Power	1,000	1,100
Agricultural divisions	18,000	20,000
Total	31,000	36,100



Arbuckle Reservoir

- Firm supply: up to 90,000 a-f per year
- Reservoir has been filled and tested
- Working on mechanical equipment



Lake Bastrop Water

- Total firm supply: up to 10,200 a-f per year
- Operate Lake Bastrop between 442 and 450 feet above mean sea level



Lake Bastrop Water (Continued)

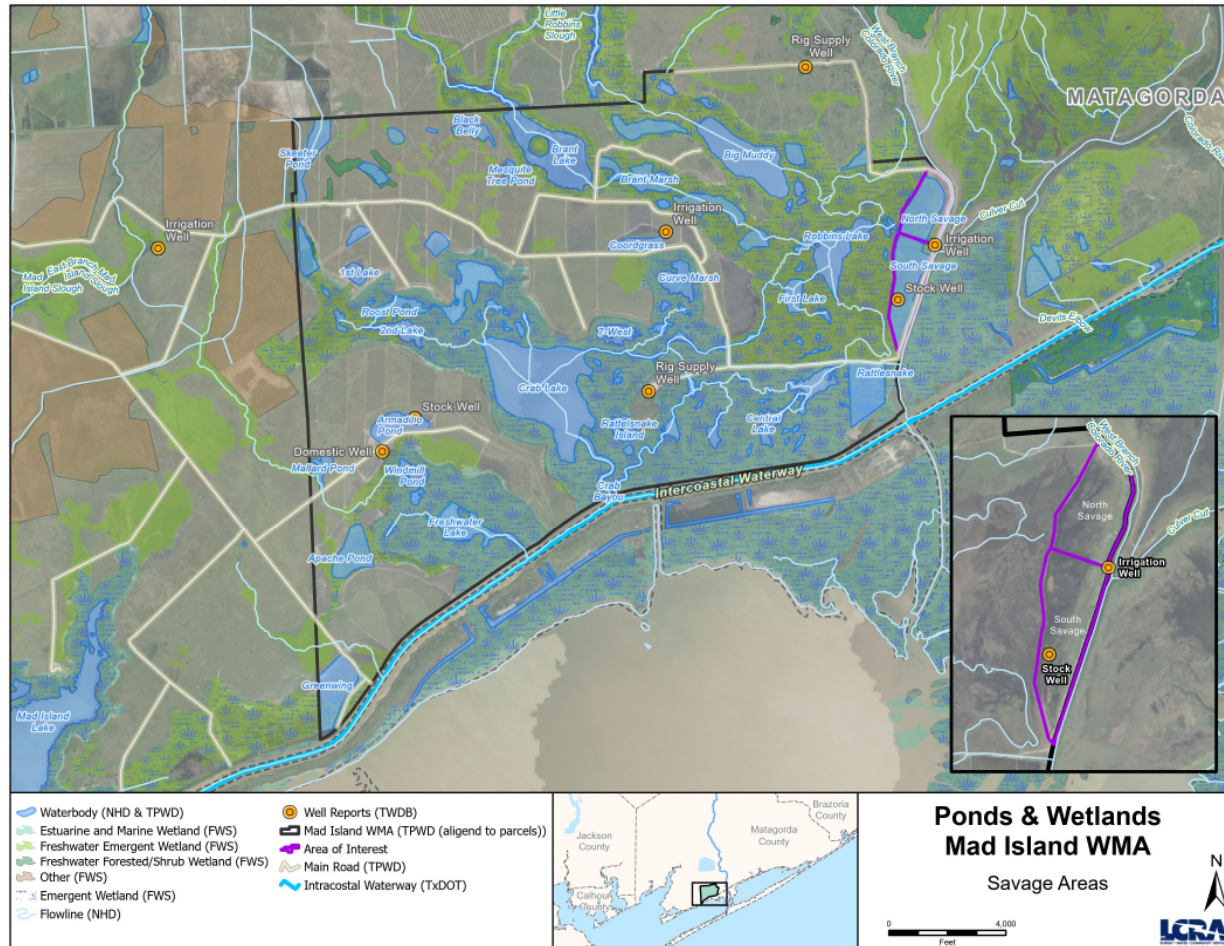
- **Proposed infrastructure:**
 - Upgrade existing river intake
 - New river pump station and pipeline
 - New outfall structure into Lake Bastrop
 - New outlet from dam to Spicer Creek
- **30% design is in progress**
- **Concurrently exploring permitting and regulatory constraints**

Griffith League Ranch Groundwater

- Groundwater permits for 8,000 a-f per year
- Executed monitoring well agreement
- Making progress on the required federal permits



Targeted Bay and Estuary Inflows





LCRA
ENERGY • WATER • COMMUNITY SERVICES