

Water Management Plan Update

Participant Meeting
April 23, 2025



Agenda

- Review comments received after first participant meeting
- Review updates to demands
- Discuss naturalized flows
 - What naturalized flows are
 - How naturalized flows are used in the modeling
- Discuss the Water Availability Model (WAM)
 - What the WAM is
 - How modeling is performed
- Discussion and questions



Response to Comments



Response to Comments

- **Preparing written response for comments**
 - Will post on www.lcra.org
- **Will discuss comments regarding information presented at the March 27 meeting**
- **Will continue to consider participant input throughout the update process**

Response to Comments

- **Preparing written response for comments**
 - Will post on www.lcra.org
- **Will discuss comments regarding information presented at the March 27 meeting**
- **Will continue to consider participant input throughout the update process**

Comments Received

- Received from three commenters
- Numerous topics including:
 - Water demands
 - Environmental flows
 - Potential changes to how and when WMP is updated

Comments Received – Process Related (For Future Discussion)

- **Make substantial changes to allocation of water for interruptible agriculture and the environment**
- **The WMP works, please do not make drastic changes**
- **Update the WMP on a more frequent basis**

Comments Received – Naturalized Flows

- **Extend hydrology through 2024**
 - *We will use naturalized flows data through 2023 as approved by TCEQ*
- **Will reservoir evaporation study data be used in the WAM?**
 - *LCRA expects to continue using the TWDB-approved data.*

Comments Received – Water Demands

- **Why is the City of Austin high demand lower than in 2020 WMP?**
 - *Austin wholesale customers are now included in the Firm Other category instead of included in the City of Austin's demands*
 - *Used the average of the three highest GPCDs since 2011, not the 2011 GPCD*
- **Why are the City of Cedar Park's projected demands for 2032 similar to 2023 usage?**
 - *Demand table updated to include wholesale customers*
 - *Cedar Park population anticipated to plateau as the community nears build out*

Comments Received – Water Demands

- Demands associated with Brazos River Authority contract and the Brushy Creek Regional Utility Authority (BCRUA)
 - *Three LCRA contracts in Williamson County*

(in acre-feet)	Cedar Park	Leander	Brazos River Authority
Max Available Quantity	23,000	31,000	25,000
2032 High Projection	19,479	18,665	8,800
 - *BRA contract currently supplies water to Round Rock, Liberty Hill and Georgetown*
 - *Round Rock, Liberty Hill and Georgetown also receive non-Colorado River basin supplies*
 - *Brushy Creek Regional Utility Authority distributes water from Lake Travis to various entities:*
 - *Cedar Park, Leander and BRA customers: Round Rock, Liberty Hill, Georgetown*

Comment Received – Water Demands

- **Provide percentages of water usage for each firm customer contract**
 - *Will be included in written response*
- **Conditions under which Garwood Irrigation Division will no longer be able to purchase agricultural interruptible water from LCRA**
 - *LCRA provides water consistent with the Garwood Purchase Agreement*
 - *Interruptible stored water cut off if combined storage is below 600,000 acre-feet and Drought Worse Than Drought of Record is declared*

Comments Received – Environmental Flows

- **Confirm that all releases for the state-threatened Blue Sucker fish are appropriate for current regulatory status**
 - *LCRA no longer makes designated releases for the Blue Sucker*
 - *Needs for the Blue Sucker are considered along with other habitat needs*
- **When run-of-river flows meet Matagorda Bay environmental needs, confirm that those flows are sufficient for the Blue Sucker fish**
 - *Instream flows and Bay inflows are evaluated separately*

Comments Received – Environmental Flows (For Discussion at June Meeting)

- **Reduce the percentage of inflows to be released from upper basin lake storage for bay criteria**
- **Apply bay threshold level when combined storage falls to 1.3 million acre-feet**

Update to Water Demands



Preliminary Projected 2032 Demands

Summation correction for
Municipal/Manufacturing - Other

	Normal (a-f/year)	High (a-f/year)
Municipal/Manufacturing		
City of Austin	183,200	207,100
Other	159,000	182,600
Steam-Electric		
LCRA	14,500	19,700
City of Austin Power Plants	7,300	10,300
STP	39,400	39,400
Bastrop Energy Center	2,300	2,300
Agriculture		
Lakeside	85,700	140,200
Garwood	81,900	100,000
Pierce Ranch	24,100	30,000
Gulf Coast	110,000	151,000

LCRA Projected Firm Demands and Recent LCRA Firm Customer Use

Customer name		High Projected Use 2032	Normal Projection Use 2032	2022 Actual Water Use	2023 Actual Water Use
		a-f	a-f	a-f	a-f
1	City of Austin Municipal ^{a,b,c}	207,051	183,241	175,431	174,060
2	South Texas Nuclear Project, Consumptive Use ^b	39,400	39,400	38,991	38,765
3	LCRA Generation ^b	19,700	14,400	13,426	10,667
4	City of Leander	18,665	15,625	11,932	12,349
5	City of Cedar Park	19,479	18,619	16,304	16,517
6	City of Pflugerville	14,939	13,019	8,897	7,110
7	HIF	11,264	11,264	0	0
8	Travis County WCID 17	10,800	9,558	9,326	8,945
9	Austin Energy at FPP ^{b,c,d}	10,300	7,300	7,138	5,434
10	OQ Chemicals Corp	10,600	8,872	7,054	4,917
11	West Travis County PUA	9,808	9,376	8,548	6,644
12	Underground Services Markham, LP	9,300	7,784	7,156	5,362
13	Brazos River Authority	8,800	7,788	3,214	4,844
14	Domestic Use, Landscape Irrigation and Temporary Use	6,000	5,022	4,395	4,791
15	City of Dripping Springs ^e	3,914	3,276		
16	City of Marble Falls	3,301	2,921	1,827	1,799
17	Travis County MUD 4	3,958	3,321	3,236	3,255
18	Lakeway MUD	2,822	2,405	2,718	2,389
19	Travis County WCID 10 ^a	2,616	2,315		
20	City of Horseshoe Bay	2,586	2,033	2,620	2,315
21	Wells Branch MUD ^a	2,558	2,144		
22	City of Lago Vista	2,496	2,209	1,708	1,600
23	Bastrop Energy Center	2,300	2,300	2,153	2,246
24	Firm Other ^{a,f}	38,701	31,454	18,492	9,087
Total		461,358	405,646	344,566	323,096
Total Non Austin MUN & IND Only Total		182,607	159,005	107,427	91,924

a. Some City of Austin wholesale demands are expected to transition to raw water contracts with LCRA. These demands are reflected in "Firm Other" for 2032.

b. Natural lake evaporation from STP, LCRA and Austin reservoirs is modeled as an additional demand, except for Lake Fayette where natural evaporation is included in the reported demand.

c. There are additional 2032 demands for City of Austin Municipal (2,900 a-f/year) and Sand Hill Energy Center (1,250 a-f/year) that are met by direct reuse.

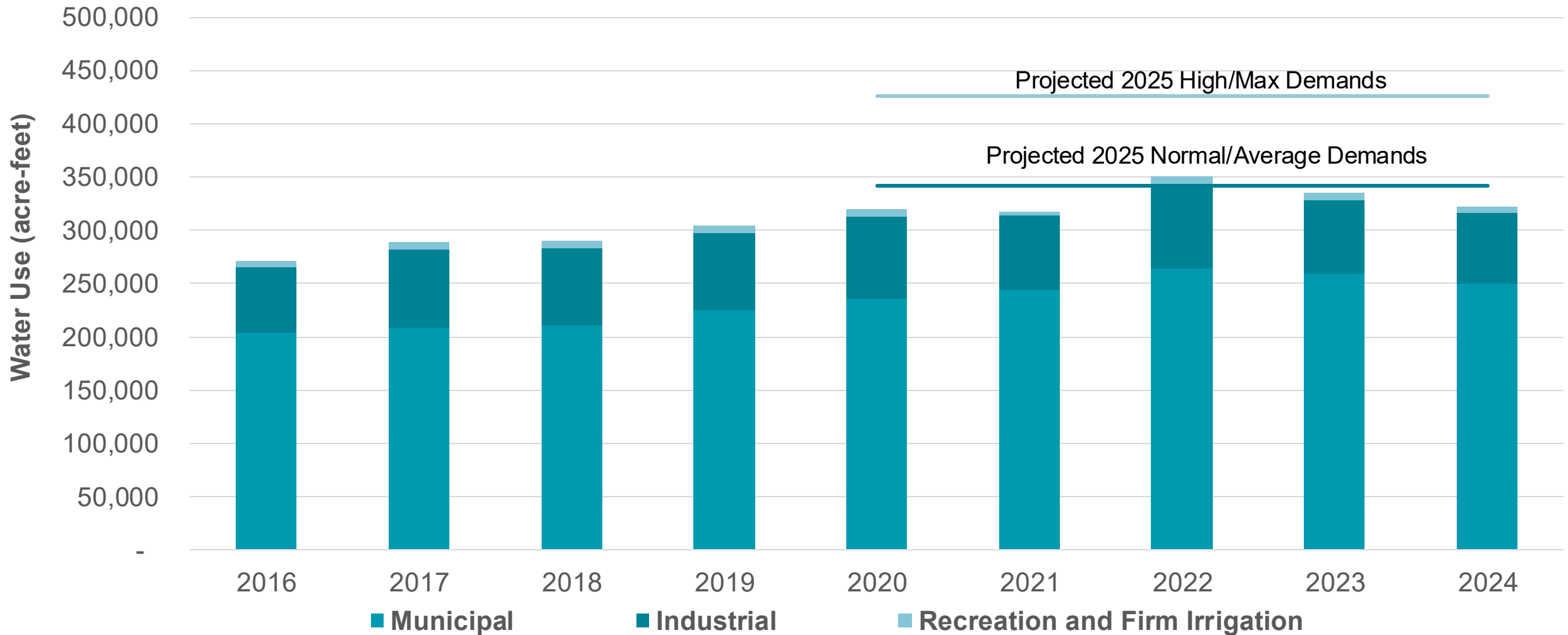
d. Decker Power Plant no longer has steam-electric cooling, therefore Decker water use for year 2022 and 2023 is not reported here for a better comparison to projected 2032 demands.

e. City of Dripping Springs was included in "Firm Other" for 2022 and 2023 Actual Water Use.

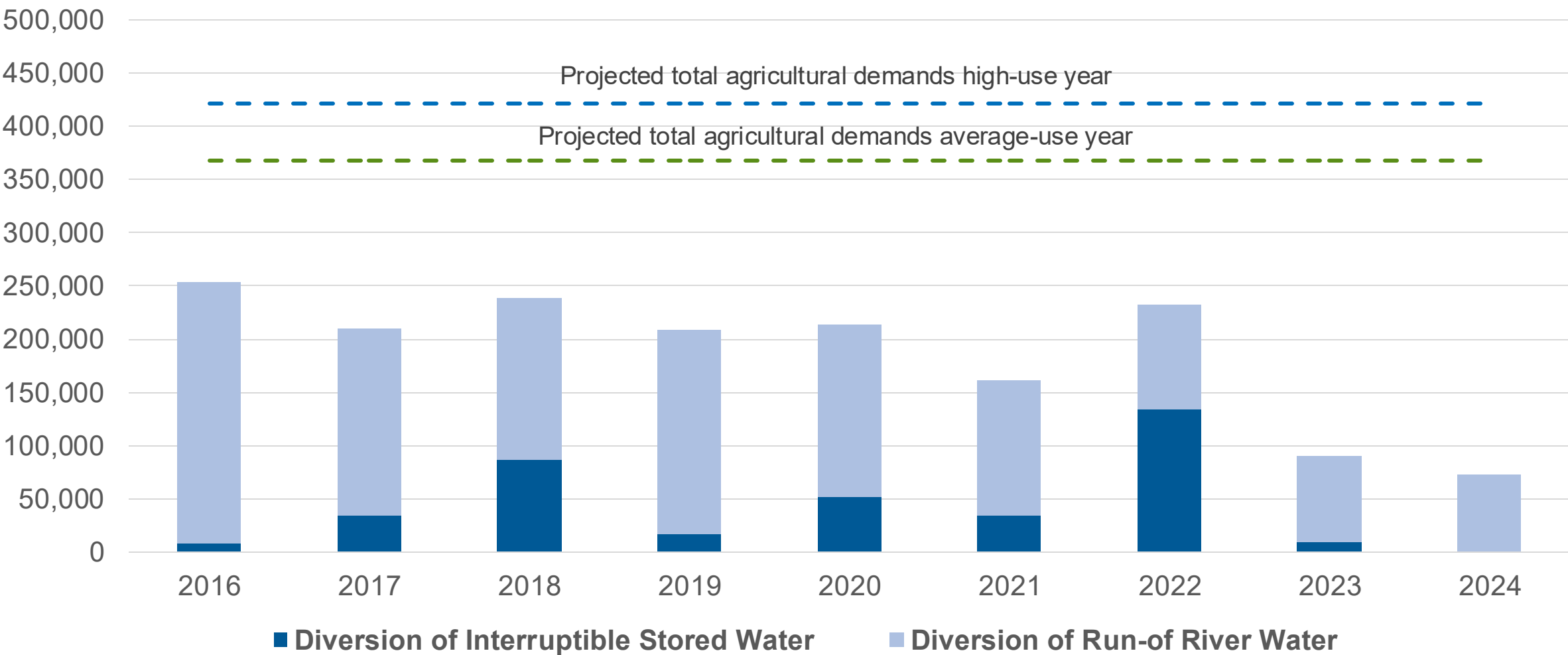
Customer Contract Quantity/Usage

Customer name	Contract Amount (MAQ)	2023 Actual Water Use	% Usage of Contract Amount
	a-f/year	a-f	a-f
City of Austin Municipal	325,000	174,060	54%
South Texas Nuclear Project, Consumptive Use	40,000	38,765	97%
LCRA Generation	23,000	10,667	46%
City of Leander	31,000	12,349	40%
City of Cedar Park	23,000	16,517	72%
City of Pflugerville	24,000	7,110	30%
HIF	12,642	0	0%
Travis County WCID 17	11,300	8,945	79%
Austin Energy at FPP	7,500	5,434	72%
OQ Chemicals Corp	8,748	4,917	56%
West Travis County PUA	13,950	6,644	48%
Underground Services Markham, LP	11,621	5,362	46%
Brazos River Authority	25,000	4,844	19%
Domestic Use, Landscape Irrigation and Temporary Use	6,000	4,791	80%
City of Marble Falls	7,000	1,799	26%
Travis County MUD 4	4,316	3,255	75%
Lakeway MUD	3,069	2,389	78%
City of Horseshoe Bay	4,450	2,315	52%
City of Lago Vista	4,500	1,600	36%
Bastrop Energy Center	3,220	2,246	70%

Municipal, Industrial, Recreation and Firm Irrigation Use From Lakes Buchanan and Travis and Colorado River



Use of Interruptible Stored Water and Run-of-River at the Four Downstream Agricultural Operations



* In 2023 and 2024, interruptible stored water was cut off to operations other than Garwood Agricultural Division.

Naturalized Flows



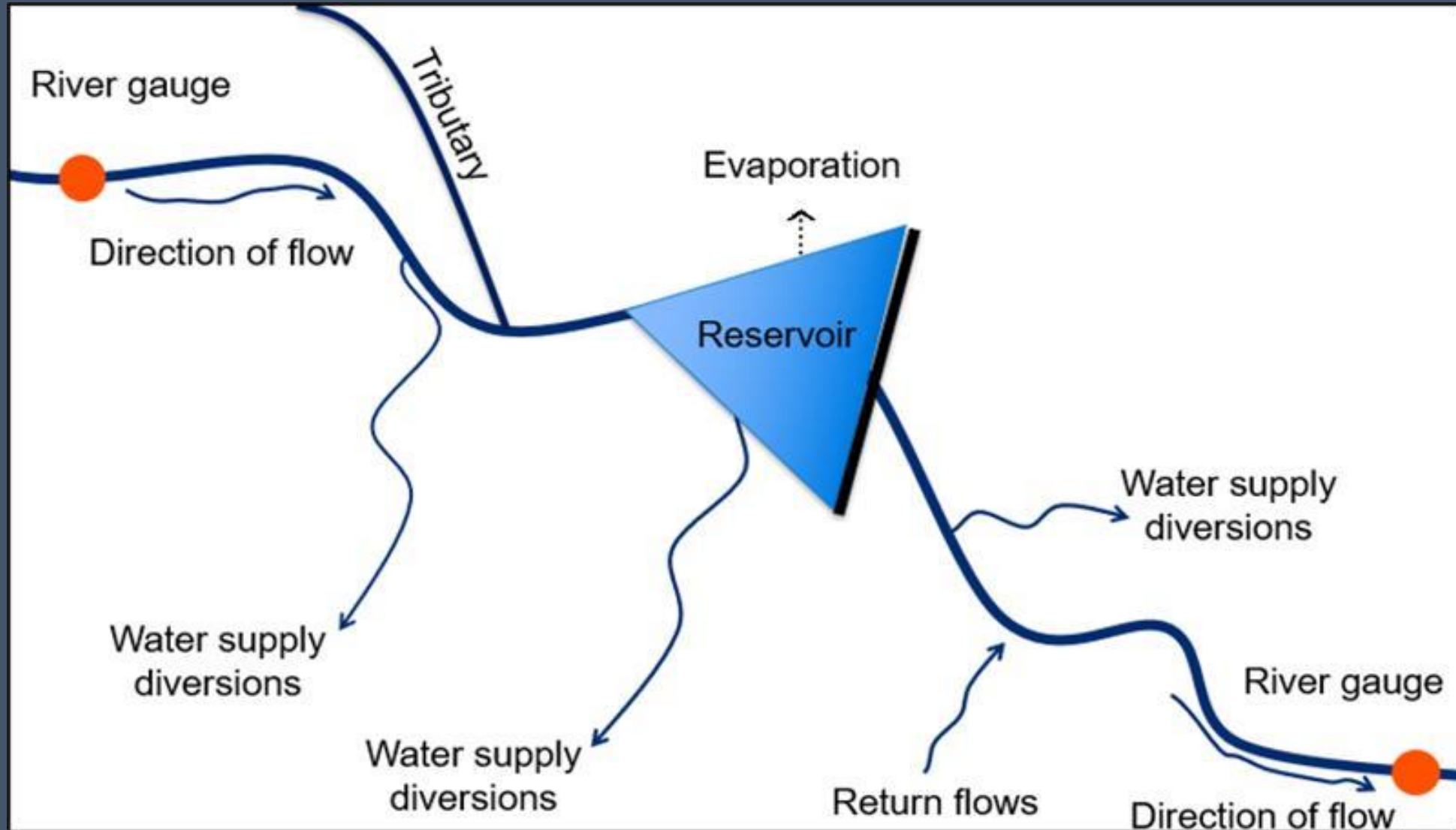
Naturalized Flows

- **What the streamflow would have been in the absence of human activities**
- **Allows examination of new management scenarios and projects, given a repeat of the Colorado River basin WAM period of record**
- **Naturalized flows are used in:**
 - Texas Commission on Environmental Quality permitting model
 - Regional and state water planning
 - LCRA WMP model
 - LCRA Firm Yield model

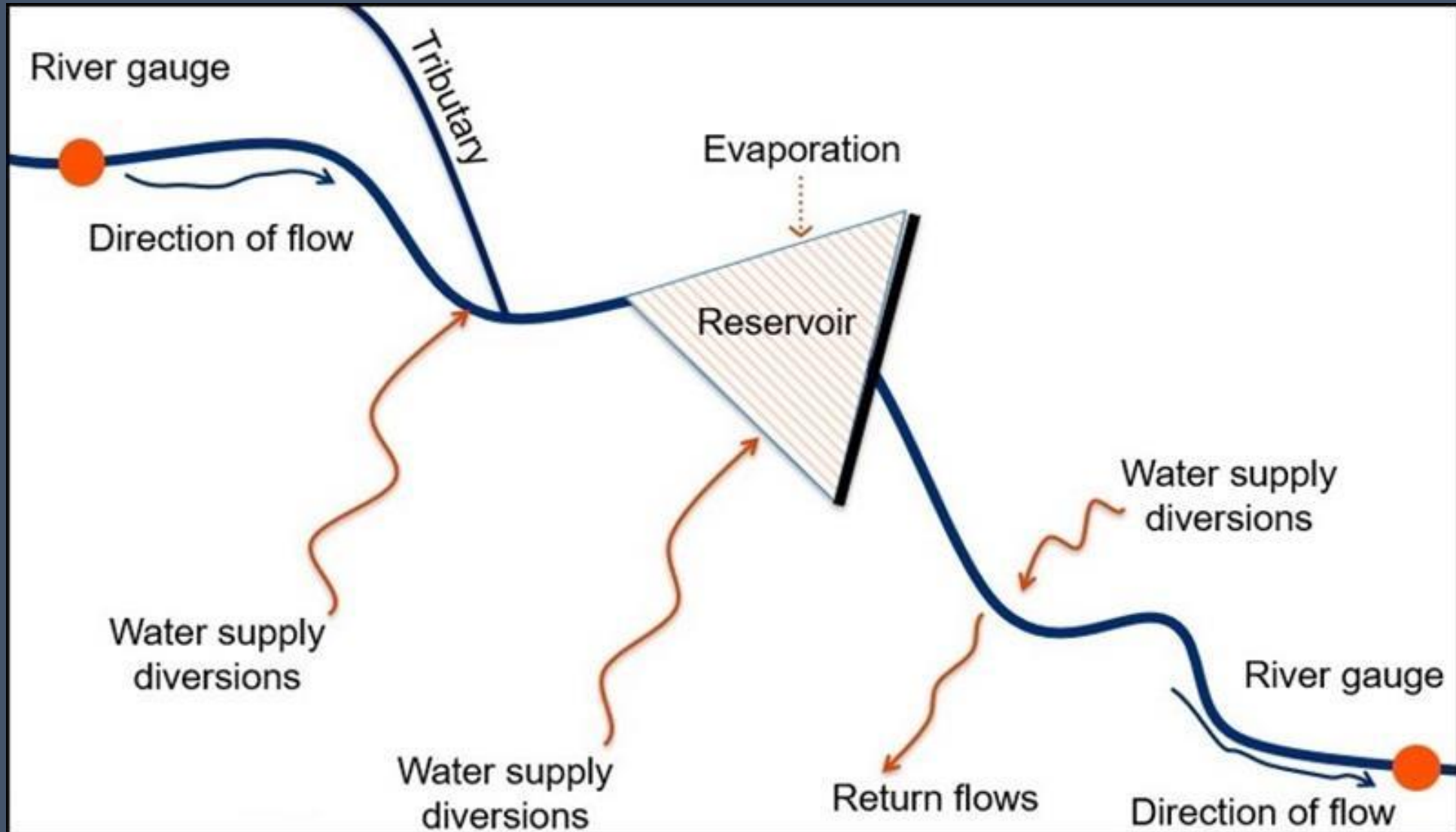
Extension of Naturalized Flows Through 2023

- Includes entire basin
- Added 2017-2023 to the flow dataset
 - Dataset now from 1940-2023
- Incorporated data and other information from Texas Water Development Board, Army Corps of Engineers, utilities and others
- Collaborated with TCEQ for data acquisition and quality control

Gauged Flow Elements



Naturalized Flow Elements



What Are Naturalized Flows?


Gauge flow

+ Diversions

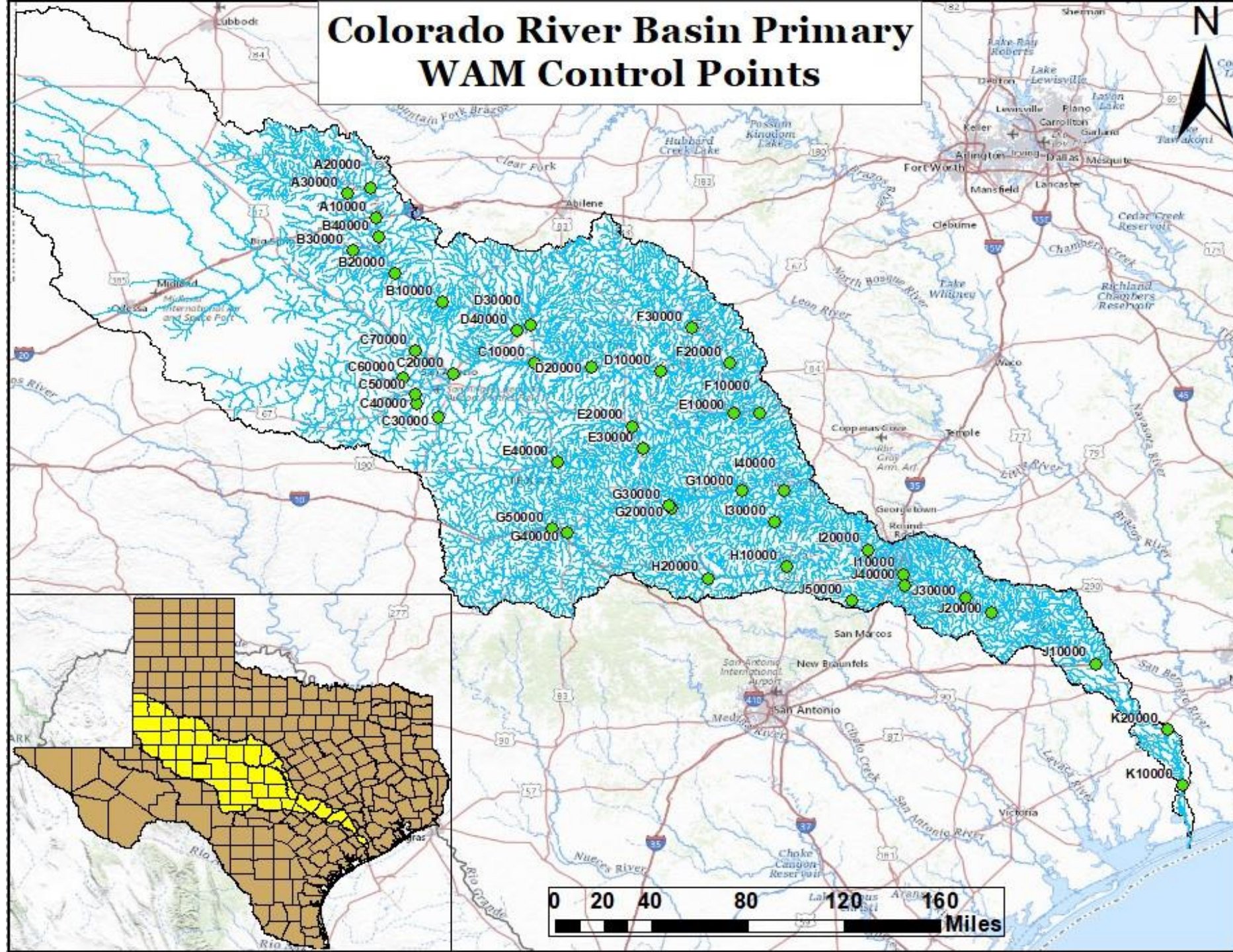
– Return flows

+ Reservoir evaporation

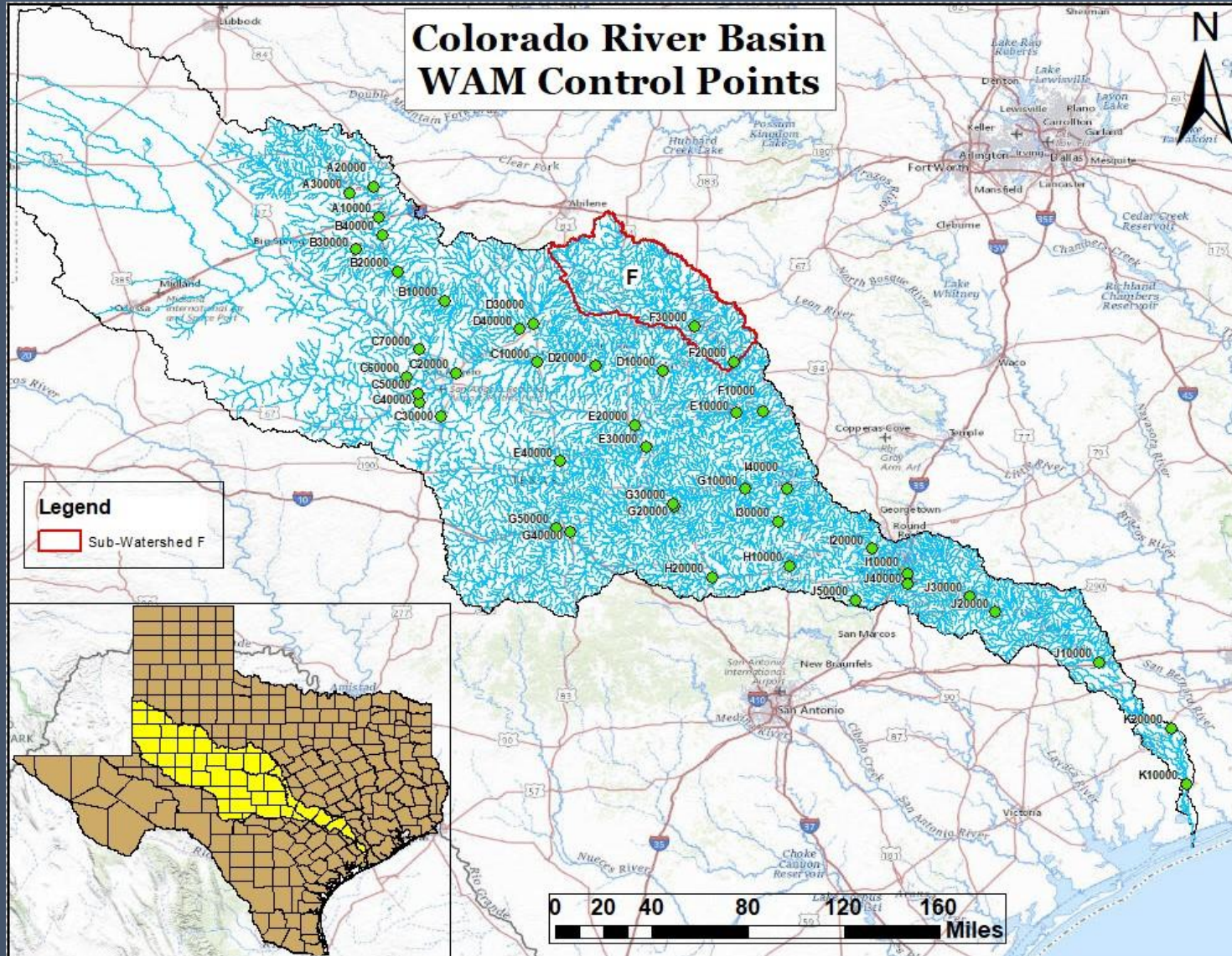
+ Change in reservoir storage



Historic
adjustment



Location of Pecan Bayou Near Mullin USGS 08143600



Pecan Bayou Near Mullin

USGS 08143600 - May 2023

Gauge*		Diversions*		Return Flows*		Net Reservoir Evaporation*		Reservoir Content Change*		Total Naturalized Flow*
		Brown County WID 1 and more than 100 other water rights		City of Brownwood Wastewater Treatment Plant		Lake Brownwood, Hords Creek Lake, Lake Coleman, Clyde Lake		Lake Brownwood, Hords Creek Lake, Lake Coleman, Clyde Lake		
3,741	+	936	-	228	+	-298	+	22,328	=	26,479

*In acre-feet

Pecan Bayou Near Mullin

USGS 08143600 - July 2022

Gauge*		Diversions*		Return Flows*		Net Reservoir Evaporation*		Reservoir Content Change*		Total Naturalized Flow*
		Brown County WID 1 and more than 100 other water rights		City of Brownwood Wastewater Treatment Plant		Lake Brownwood, Hords Creek Lake, Lake Coleman, Clyde Lake		Lake Brownwood, Hords Creek Lake, Lake Coleman, Clyde Lake		
0	+	2,965	-	162	+	6,310	+	-8,738	=	375

*In acre-feet

Summary on Naturalized Flows

- **Naturalized flows used in Water Availability Modeling**
 - Allows the effect of new management scenarios and projects to be examined across the period of record

Questions?

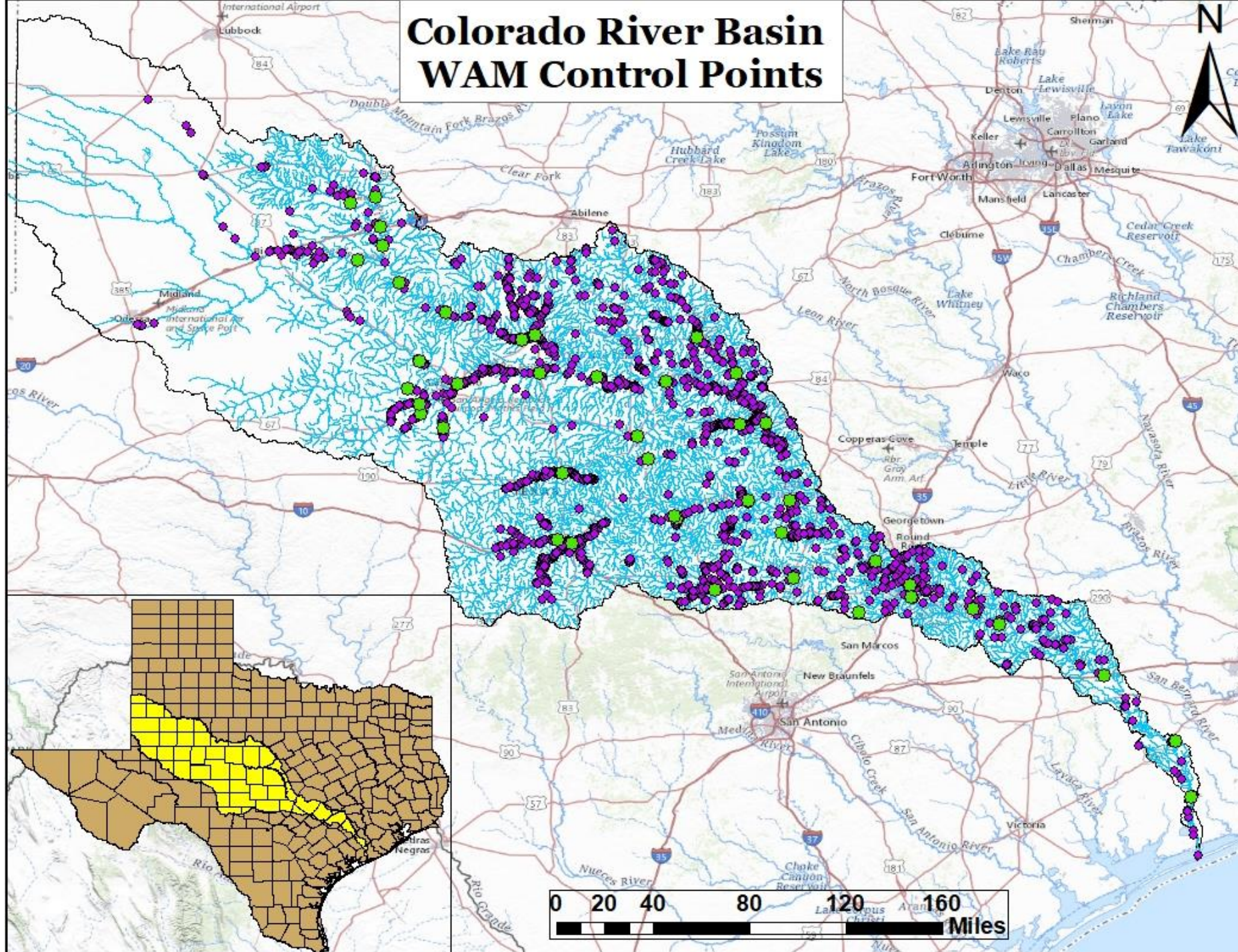
LCRA's Water Availability Model (WAM)



Background on WAM

- **What is WRAP and what is WAM?**
 - Water Rights Analysis Package: Software package
 - Water Availability Model: A basin-specific model
 - Bottom line: It's "just" a basin-wide streamflow mass balance calculation
- **Why was it developed?**
 - Required by statute, TCEQ maintains a WAM for every Texas river basin and coastal river basin for use in water rights administration
 - Texas A&M develops and maintains the WRAP
- **Who uses it?**
 - TCEQ, water supply planners, TWDB and water providers

Colorado River Basin WAM Control Points



Background on WAM

- **How does it work?**
 - The WAM steps through a repeat of historical hydrology 1940-2023
 - One month at a time (monthly timestep)
 - One water right at a time (priority loop)
- **What's the result?**
 - Likely outcomes under new water management operations
 - Diversion volumes, reservoir storage volumes, streamflow volumes

LCRA WMP WAM

- **Major differences from TCEQ's permitting WAM:**
 - LCRA firm customers set to 2032 demands
 - Includes expected 2032 return flows (wastewater treatment plant discharges)
 - "Super cut-off" sets all water rights upstream of Lake Travis to a senior priority
 - Reliable downstream flow limits
- **More information in 2020 WMP Appendix A: Technical Papers at www.lcra.org/watermanagementplan**

LCRA WMP WAM

- **Summary Results (provided in context of the period of record and drought of record)**
 - Firm demands met
 - Reservoir volumes (minimums and frequencies)
 - Instream flows and Matagorda Bay inflows
 - Water supplied for agricultural customers
- **Detailed Results of monthly volumes**

WATER MANAGEMENT PLAN – SCENARIO RUNS

PERIOD-OF-RECORD RESULTS SUMMARY

Prepared for 2020 WMP Update

PERIOD-OF-RECORD RESULTS (1940 - 2016)		1-4-2019 Run	UNITS
DEMAND CATEGORY / PARAMETER			
REF	Firm Demands		
	Maximum Firm Demand:	389,425	ac-ft
	Maximum Firm Supply:	389,425	ac-ft
REF	Lake Level		
[1]	% of months combined storage below 900,000 ac-ft	3%	
[2]	% of months combined storage below 600,000 ac-ft	0%	
[3]	Minimum combined storage in lakes Buchanan and Travis	661,879	ac-ft
REF	Interruptible Irrigation - All Divisions		
[4]	Number of years first crop partially curtailed	5	yr
[5]	Number of years no stored water available for first crop	11	yr
[6]	Number of years first crop cut-off mid-season	1	
[7]	Number of years second crop partially curtailed	4	yr
[8]	Number of years no stored water available for second crop	15	yr
[9]	Number of years second crop cut-off mid-season	0	
REF	Environmental - Bay and Estuary (B&E)		
[10]	Average annual Matagorda Bay inflow volume	1,610,105	ac-ft
[11]	Average monthly salinity in Matagorda Bay	22	ppt
[12]	Max # of sequential months Matagorda Bay salinity exceeds 27.5 ppt	21	
[13]	% of months Threshold inflow criteria are met (Goal 100%)	95%	
[14]	% of months Subsistence IF criteria met at Columbus (Goal 100%)	100%	

Detailed Results Example

Model Version for January 4, 2019

01/07/2019 End of month LCRA combined system storage (Lakes Buchanan and Travis)

03:35 PM

	NORMAL
	LESS SEVERE
	EXTRAORDINARY
	LOOK-AHEAD

	JAN	FEB	MAR	APR	MAY	JUN	JUL	AUG	SEP	OCT	NOV	DEC
1940	1,871,754	1,878,425	1,883,734	1,906,737	1,953,496	1,951,496	1,951,496	1,951,496	1,951,496	1,951,496	1,951,496	1,951,496
1941	1,996,717	1,996,717	1,996,717	1,996,717	1,996,717	1,996,717	1,996,717	1,996,717	1,996,717	1,996,717	1,996,717	1,996,717
1942	1,941,982	1,932,350	1,900,915	1,906,717	1,953,496	1,951,496	1,951,496	1,951,496	1,951,496	1,951,496	1,951,496	1,951,496
1943	1,959,964	1,937,395	1,910,573	1,892,287	1,914,402	1,913,535	1,913,535	1,913,535	1,913,535	1,913,535	1,913,535	1,913,535
1944	1,955,136	1,724,322	1,792,194	1,822,356	1,953,496	1,951,496	1,951,496	1,951,496	1,951,496	1,951,496	1,951,496	1,951,496
1945	1,996,717	1,996,717	1,996,717	1,996,717	1,996,717	1,996,717	1,996,717	1,996,717	1,996,717	1,996,717	1,996,717	1,996,717
1946	1,902,123	1,852,020	1,856,721	1,888,315	1,953,496	1,951,496	1,951,496	1,951,496	1,951,496	1,951,496	1,951,496	1,951,496
1947	1,933,882	1,957,306	1,981,025	1,996,717	1,954,326	1,982,323	1,954,326	1,954,326	1,954,326	1,954,326	1,954,326	1,954,326
1948	1,503,093	1,496,882	1,485,377	1,473,357	1,454,432	1,443,640	1,422,032	1,422,032	1,422,032	1,422,032	1,422,032	1,422,032
1949	1,392,988	1,236,278	1,282,522	1,419,239	1,500,496	1,488,128	1,431,683	1,382,503	1,348,312	1,317,043	1,214,232	1,308,966
1950	1,308,804	1,180,827	1,204,564	1,312,622	1,399,096	1,352,456	1,362,138	1,312,809	1,268,136	1,079,544	1,076,113	1,098,966
1951	1,022,437	1,013,876	998,320	974,717	1,054,212	1,138,003	1,063,871	1,003,214	961,894	915,339	886,154	886,154
1952	858,967	845,764	821,337	874,212	1,076,827	998,268	894,642	832,150	775,215	719,204	703,880	744,401
1953	1,878,506	1,887,842	1,885,142	1,886,886	1,930,548	1,895,630	1,753,294	1,661,401	1,608,457	1,639,709	1,609,892	1,588,298
1954	1,577,898	1,545,706	1,499,872	1,536,584	1,525,128	1,517,883	1,257,469	1,153,021	1,070,929	1,048,412	1,050,155	1,031,692
1955	1,034,219	1,038,818	1,032,793	984,243	1,052,610	1,029,000	1,441,283	1,442,012	1,567,000	1,561,702	1,526,011	1,511,677
1956	1,040,937	1,048,170	1,054,777	1,056,955	1,056,955	1,056,955	1,056,955	1,056,955	1,056,955	1,056,955	1,056,955	1,056,955
1957	1,085,955	1,085,403	1,113,228	1,113	1,113	1,113	1,113	1,113	1,113	1,113	1,113	1,113
1958	1,996,717	1,996,717	1,996,717	1,996,717	1,996,717	1,996,717	1,996,717	1,996,717	1,996,717	1,996,717	1,996,717	1,996,717
1959	1,959,204	1,972,700	1,958,978	1,975,888	1,943,595	1,953,496	1,953,496	1,953,496	1,953,496	1,953,496	1,953,496	1,953,496
1960	1,996,717	1,996,717	1,996,717	1,996,717	1,996,717	1,996,717	1,996,717	1,996,717	1,996,717	1,996,717	1,996,717	1,996,717
1961	1,996,717	1,996,717	1,996,717	1,996,717	1,996,717	1,996,717	1,996,717	1,996,717	1,996,717	1,996,717	1,996,717	1,996,717
1962	1,933,871	1,915,472	1,895,436	1,883,266	1,981,065	1,759,888	1,790,354	1,638,222	1,588,669	1,625,664	1,612,660	1,606,642
1963	1,589,266	1,591,674	1,556,366	1,523,470	1,505,030	1,400,128	1,294,881	1,270,138	1,163,631	1,136,173	1,157,888	1,155,248
1964	1,166,236	1,193,079	1,255,232	1,222,070	1,282,898	1,328,072	1,284,818	1,282,818	1,282,818	1,282,818	1,282,818	1,282,818
1965	1,601,940	1,778,058	1,799,504	1,807,395	1,953,496	1,953,496	1,953,496	1,953,496	1,953,496	1,953,496	1,953,496	1,953,496
1966	1,874,701	1,545,170	1,908,094	1,975,798	1,953,496	1,977,725	1,780,794	1,764,262	1,698,072	1,782,126	1,765,861	1,795,002
1967	1,716,086	1,728,835	1,697,790	1,684,825	1,677,862	1,488,327	1,427,887	1,349,533	1,358,666	1,374,564	1,401,367	1,403,827
1968	1,996,717	1,996,717	1,996,717	1,996,717	1,996,717	1,996,717	1,996,717	1,996,717	1,996,717	1,996,717	1,996,717	1,996,717
1969	1,799,707	1,792,218	1,793,294	1,787,439	1,877,522	1,677,580	1,791,663	1,751,868	1,730,122	1,953,496	1,978,263	1,996,717
1970	1,996,717	1,996,717	1,996,717	1,996,717	1,996,717	1,996,717	1,996,717	1,996,717	1,996,717	1,996,717	1,996,717	1,996,717
1971	1,746,252	1,731,281	1,702,827	1,662,685	1,594,428	1,447,912	1,440,980	1,752,250	1,852,951	1,953,496	1,963,131	1,996,717
1972	1,996,717	1,996,717	1,971,261	1,946,605	1,953,496	1,896,252	1,825,405	1,792,447	1,761,024	1,755,988	1,754,230	1,750,921
1973	1,767,516	1,907,262	1,820,451	1,828,408	1,780,232	1,759,818	1,789,147	1,789,821	1,777,827	1,953,496	1,965,018	1,967,863
1974	1,979,840	1,968,480	1,948,646	1,919,110	1,953,496	1,880,660	1,778,025	1,953,496	1,953,496	1,953,496	1,996,717	1,996,717
1975	1,996,717	1,996,717	1,996,717	1,996,717	1,996,717	1,996,717	1,996,717	1,996,717	1,996,717	1,996,717	1,996,717	1,996,717
1976	1,858,087	1,841,685	1,828,844	1,852,122	1,880,987	1,782,018	1,953,496	1,950,922	1,941,355	1,953,496	1,976,828	1,996,717
1977	1,996,717	1,996,717	1,996,717	1,996,717	1,996,717	1,996,717	1,996,717	1,996,717	1,996,717	1,996,717	1,996,717	1,996,717
1978	1,606,232	1,678,325	1,666,760	1,641,648	1,577,944	1,489,578	1,381,366	1,600,969	1,746,274	1,723,287	1,741,412	1,751,806
1979	1,701,995	1,868,211	1,953,929	1,996,717	1,953,496	1,953,496	1,950,429	1,946,231	1,899,549	1,868,387	1,848,158	1,839,590
1980	1,827,905	1,836,219	1,768,766	1,769,373	1,781,263	1,675,883	1,567,275	1,661,593	1,753,674	1,767,137	1,768,465	1,780,623
1981	1,763,798	1,784,078	1,848,729	1,880,055	1,836,150	1,953,496	1,838,726	1,890,258	1,871,498	1,953,496	1,957,105	1,953,953
1982	1,942,385	1,930,400	1,913,483	1,918,717	1,923,924	1,950,429	1,896,964	1,821,889	1,763,338	1,729,058	1,720,533	1,711,664
1983	1,711,742	1,723,359	1,748,093	1,716,683	1,760,427	1,748,799	1,682,521	1,629,117	1,574,132	1,553,550	1,554,768	1,529,499
1984	1,517,423	1,446,982	1,684,664	1,630,486	1,591,823	1,534,736	1,427,673	1,680,338	1,680,338	1,680,338	1,722,862	1,722,862
1985	1,513,208	1,621,360	1,723,260	1,740,231	1,711,294	1,694,137	1,619,281	1,535,307	1,488,289	1,670,044	1,696,140	1,730,971
1986	1,730,230	1,750,448	1,785,821	1,782,475	1,783,024	1,953,496	1,875,848	1,853,329	1,802,714	1,953,496	1,979,272	1,996,717
1987	1,996,717	1,996,717	1,996,717	1,996,717	1,996,717	1,996,717	1,996,717	1,996,717	1,996,717	1,996,717	1,996,717	1,996,717
1988	1,948,202	1,918,615	1,920,934	1,902,534	1,843,671	1,798,395	1,821,617	1,731,139	1,680,164	1,646,041	1,620,409	1,609,861
1989	1,823,645	1,646,961	1,654,103	1,633,135	1,676,150	1,678,680	1,584,342	1,488,740	1,427,171	1,383,858	1,378,000	1,367,197
1990	1,360,358	1,368,386	1,367,880	1,361,861	1,369,543	1,371,534	1,798,046	1,761,479	1,800,065	1,791,910	1,803,250	1,790,755
1991	1,843,034	1,865,442	1,843,478	1,832,883	1,772,185	1,749,528	1,689,239	1,634,197	1,681,386	1,703,839	1,732,862	1,996,717
1992	1,996,717	1,996,717	1,996,717	1,996,717	1,996,717	1,996,717	1,996,717	1,996,717	1,996,717	1,996,717	1,996,717	1,996,717
1993	1,996,717	1,996,717	1,996,717	1,996,717	1,996,717	1,996,717	1,996,717	1,996,717	1,996,717	1,996,717	1,996,717	1,996,717
1994	1,717,149	1,738,075	1,749,746	1,734,542	1,953,496	1,867,192	1,772,485	1,718,151	1,707,621	1,726,222	1,700,604	1,684,860
1995	1,880,523	1,898,030	1,949,408	1,996,717	1,953,496	1,953,496	1,883,111	1,811,544	1,787,136	1,760,985	1,769,962	1,771,530
1996	1,755,809	1,742,004	1,720,522	1,681,790	1,567,312	1,477,973	1,404,289	1,303,386	1,438,548	1,640,948	1,686,058	1,744,320
1997	1,758,880	1,996,717	1,996,717	1,996,717	1,996,717	1,996,717	1,996,717	1,996,717	1,996,717	1,996,717	1,996,717	1,996,717
1998	1,584,091	1,996,717	1,996,717	1,996,717	1,996,717	1,996,717	1,996,717	1,996,717	1,996,717	1,996,717	1,996,717	1,996,717
1999	1,927,131	1,902,183	1,978,277	1,960,794	1,953,496	1,880,130	1,808,029	1,728,867	1,653,850	1,620,131	1,588,864	1,568,915
2000	1,549,585	1,502,692	1,531,052	1,502,483	1,454,373	1,434,912	1,332,121	1,246,936	1,251,299	1,249,834	1,686,885	1,996,717
2001	1,996,717	1,996,717	1,996,717	1,996,717	1,996,717	1,996,717	1,996,717	1,996,717	1,996,717	1,996,717	1,996,717	1,996,717
2002	1,966,731	1,973,516	1,966,364	1,945,206	1,869,411	1,834,600	1,953,496	1,914,158	1,881,501	1,947,089	1,962,190	1,974,795
2003	1,982,388	1,996,717	1,996,717	1,980,194	1,818,727	1,823,695	1,860,195	1,793,679	1,788,940	1,828,386	1,808,747	1,787,540
2004	1,705,413	1,804,289	1,829,140	1,996,717	1,953,496	1,943,006	1,953,496	1,953,496	1,953,496	1,953,496	1,953,496	1,953,496
2005	1,996,717	1,996,717	1,996,717	1,996,717	1,996,717	1,996,717	1,996,717	1,996,717	1,996,717	1,996,717	1,996,717	1,996,717
2006	1,668,445	1,666,508	1,644,612	1,628,883	1,628,371	1,505,705	1,4					

Questions?

Next Steps

- **Responses to comments from the previous meeting will be posted next week**
- **Comment period open throughout the update process**
 - Submit comments related to this meeting to **LCRAWMP@lcra.org** by May 14
- **Third participant meeting: June 25**
 - Present initial modeling results

Timeline

March 27, 2025	First participant meeting
April 23, 2025	Second participant meeting
June 25, 2025	Third participant meeting
July 23, 2025*	Fourth participant meeting
Aug. 26, 2025*	Fifth participant meeting
October 2025	Sixth participant meeting
January 2026	Present staff recommendation on WMP updates to LCRA Board
Spring 2026	Request LCRA Board approval
Summer 2026	Submit to TCEQ for approval

*Tentative dates

FOR DISCUSSION PURPOSES ONLY

Questions?

