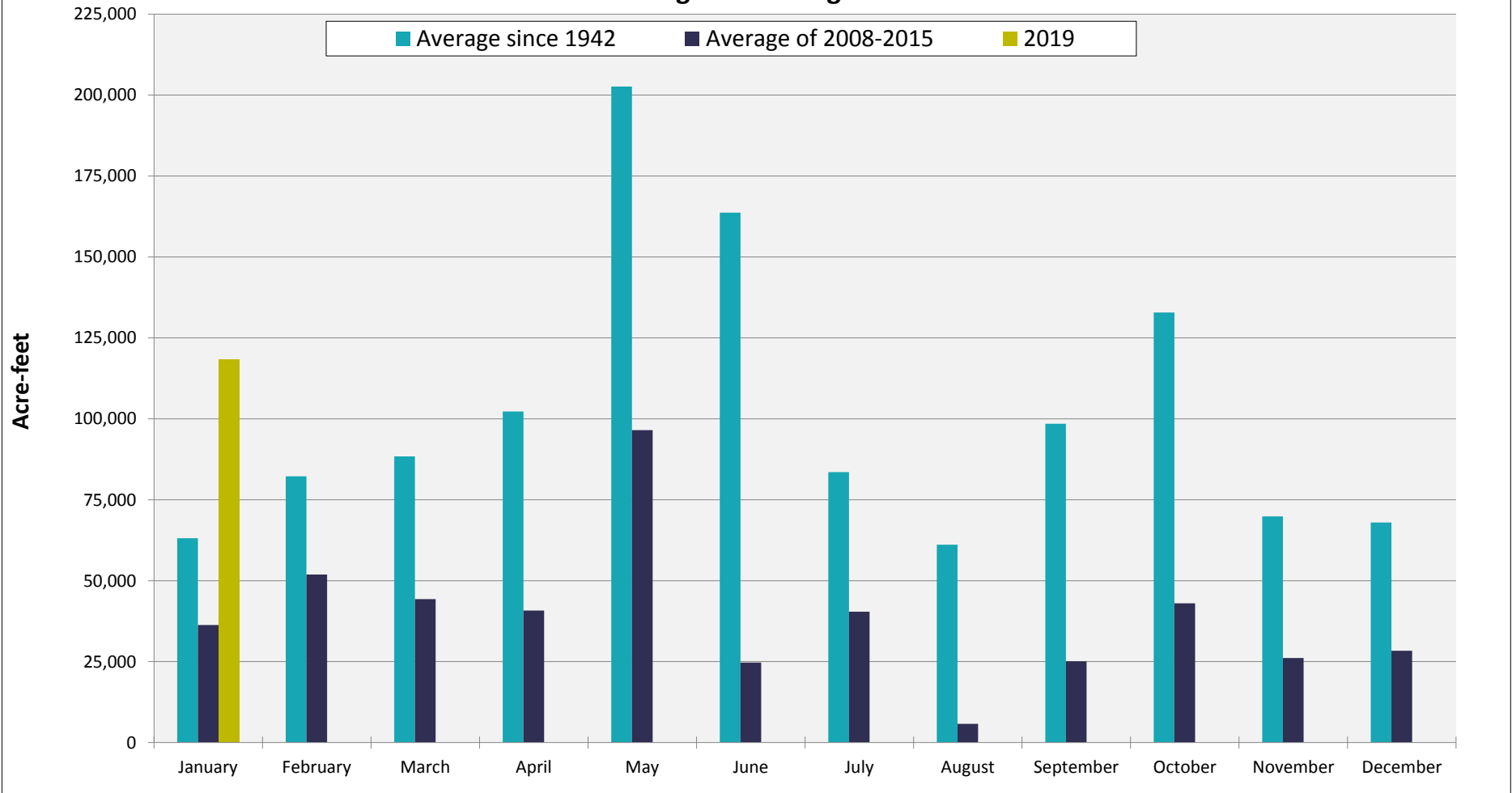


Water Flowing Into the Highland Lakes



* Inflows: the estimated amount of water flowing into the Highland Lakes from rivers and streams.

Period: January (acre-feet)	
Since 1942, January Average:	63,100
2008-2015, January Average:	36,300
January 2019:	118,381

Data for 2018 and 2019 is preliminary and subject to change.